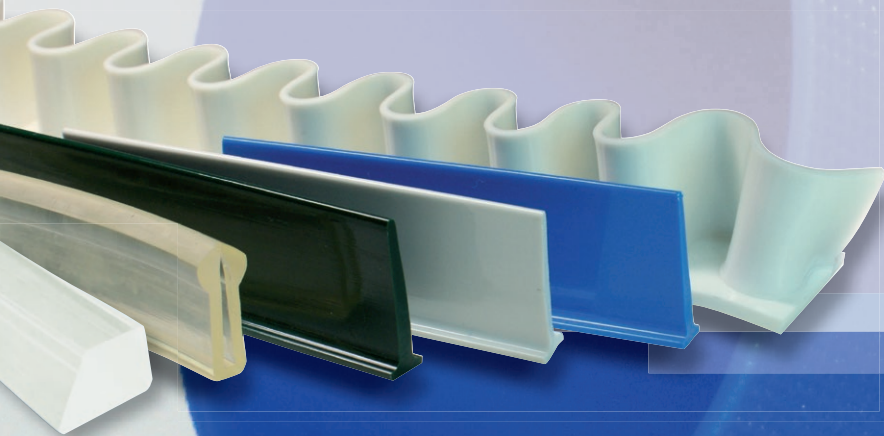


Elastic monolithic conveyor belts

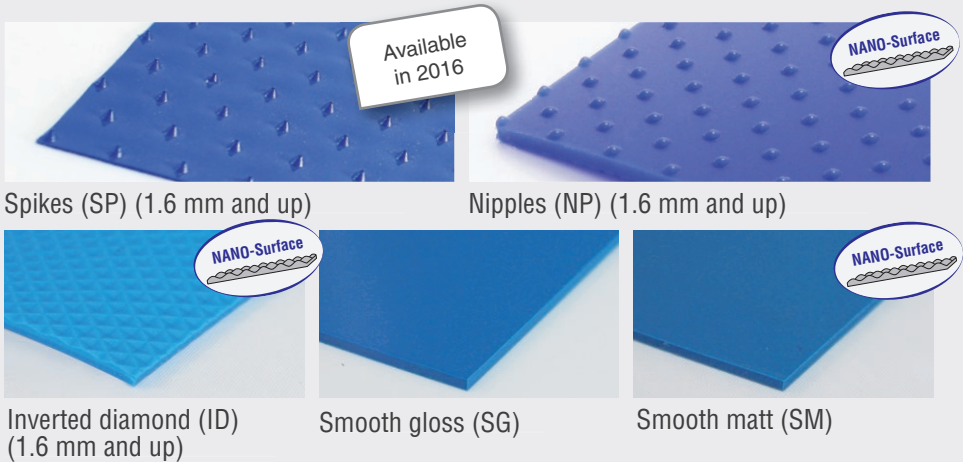
for the food industry

Cover sheets · Tracking profiles · Cleats · Belt edges · Sidewalls

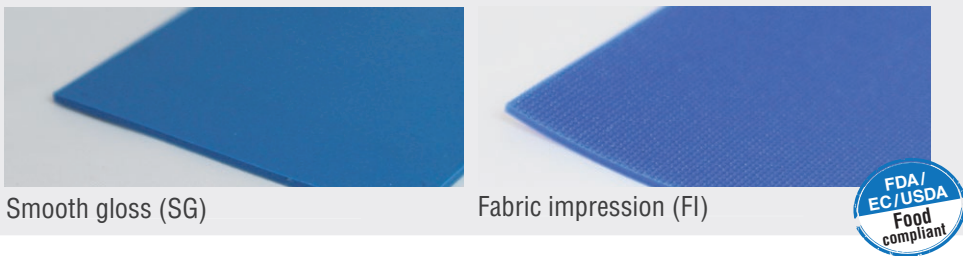


Elastic monolithic conveyor belts - 750 mm

Available surfaces (top sides)



Available Bottom sides



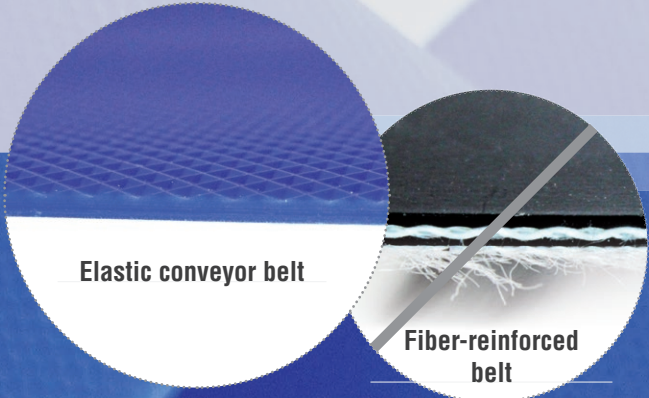
Quality	Colour		Shore-hardness	Belt thickness		Weight* per Meter approx. kg	Recommended Min.-Pulley-Ø		Pull force for pretension of 1%		Standard Roll		Pretension % recommand
				mm	inch		mm	inch	kg/cm	lbs/inch	m	ft	
PU 65 A	transparent	ultramarine blue	72 A	1,6	1/16	1,35	10	0,40	0,16	0,90	50	164	3-5%
				2,0	5/64	1,70	12	0,50	0,20	1,10	50	164	
				3,0	1/8	2,50	20	0,80	0,30	1,70	50	164	
PU 75 A	ultramarine blue	white	80 A	1,0	2/50	0,85	10	0,40	0,15	0,85	50	164	
				1,6	1/16	1,35	15	0,60	0,24	1,30	50	164	
				2,0	5/64	1,70	20	0,80	0,30	1,70	50	164	
				3,0	1/8	2,50	30	1,20	0,45	2,50	50	164	
PU 80 A	ultramarine blue		84 A	1,0	2/50	0,85	10	0,40	0,20	1,10	50	164	
				1,6	1/16	1,35	15	0,60	0,32	1,80	50	164	
				2,0	5/64	1,70	20	0,80	0,40	2,25	50	164	
				3,0	1/8	2,50	30	1,20	0,60	3,35	50	164	
PU 80 A SAFE	capri blue *	*SAFE Metal detectable	84 A	1,0	2/50	1,35	10	0,40	0,18	1,00	50	164	
				1,6	1/16	1,70	15	0,60	0,29	1,60	50	164	
				2,0	5/64	2,50	20	0,80	0,36	2,00	50	164	
PU 95 A	sky blue	ultramarine blue	95 A	1,6	1/16	1,35	25	1,00	0,80	4,50	50	164	1-3%
				2,0	5/64	1,70	35	1,40	1,00	5,60	50	164	
				3,0	1/8	2,50	50	2,00	1,50	8,40	50	164	
TPE 55 D	ultramarine blue	white	55 D	2,0	5/64	1,70	65	2,60	1,50	8,40	50	164	
				3,0	1/8	2,50	85	3,40	2,25	12,60	50	164	

* Band width 750 mm

Elastic monolithic conveyor belts (100% PU/TPE) replace fabric-reinforced conveyor belts with sealed belt edges.

There are several reasons for our monolithic conveyor belts

- Easily cut to your required belt width.
- Smooth surfaces eliminate any crevices where bacteria may harbour.
- No exposed fabrics or seams which can fray.
- Belt is homogeneous so eliminates any chance of ply separation.
- Easy and quick cleaning on site possible.
- NANO-surface to facilitated cleaning of belt surfaces and easier release of products during the process.
- Heavily reduced consumption of water and chemicals for daily cleaning.
- Easy belt installation and repair on-site possible.
- Easy joining and excellent weldability.
- High resistance against water, oil and many chemicals.
- High cut and abrasion resistance.
- FDA/EC/USDA compliant product line as well as detectable type (for metal detectors in food production lines).



PUtex Coating alternative to rubber

BEHAbelt PUtex

Similar to a rubber coating, but fully weldable and offers excellent properties against delamination of the coating. The unique BEHAbelt PU compound combines excellent grip properties due to the high coefficient of friction with simultaneously low abrasion. BEHAbelt PUtex is the perfect alternative to rubber.

PU coating flat belts - 140 mm



PU-flat belts as coating

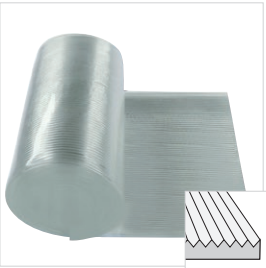
We offer a variety of transparent polyurethane coatings with outstanding welding characteristics. In addition, all coatings are FDA / EC compliant and thus offer a wide range of applications.

PUtex - replaces rubber coatings



Quality PU	PU 60A
Shore A - D	65A
Colour	red
FDA/EC compliant	yes, smooth
Belt width (mm)	max. 140
Belt thickness (1,0 - 4,0 mm)	1,6/2,0/3,0/4,0
Standard roll	50m

140mm PU-flat belts as coating



ribbed*

Quality PU	PU 60A	PU 65A	PU 65A	PU 75A	PU 85A
Shore A - D	65A	72A	72 A	80A	88A
Colour	transparent	transparent	transparent ribbed*	transparent	transparent
FDA/EC/USDA compliant	yes, smooth	yes, smooth			
Belt width (mm)	max. 140	max. 140			
Belt thickness (1,0 - 4,0 mm)	1,6/2,0/3,0/4,0	1,0/1,6/2,0/3,0/4,0			
Standard Roll	50 m	50 m			

Cut-to-width up to 140mm possible, please contact us! - * Rib shape according to DIN 7867 / ISO 9982



Welded directly to the base belt - no messy adhesive required.



One step hot air welding process saves time.



Butt welding allows direct connection of the belt ends.



No delamination of coating possible.



100% made of polyurethane.



FDA/EC compliant.

140mm PU-flat belts for coating and transportation

Description	Colour	Shore-hardness	Belt thickness		max. Belt width		approx. Weight* kg/100m	Standard Roll		Recommended Min. pulley-Ø		Pull force for pretension of	
			mm	inch	mm	inch		m	(ft)	mm	inch	kg/cm	lbs/inch
PU 75 A FDA/EC/USDA compliant	sky blue smooth	80 A	1,0	3/64	140	5,5	18,0	50	164	10,0	0,4	0,15	0,85
			1,6	1/16	140	5,5	28,8	50	164	15,0	0,6	0,24	1,3
			2,0	5/64	140	5,5	36,0	50	164	20,0	0,8	0,30	1,7
			3,0	1/8	140	5,5	54,0	50	164	25,0	1	0,45	2,5
			4,0	5/32	140	5,5	72,0	50	164	35,0	1,4	0,60	3,4
PU 85 A	green smooth	88 A	1,0	3/64	140	5,5	18,0	50	164	15,0	0,6	0,23	1,3
			1,6	1/16	140	5,5	28,8	50	164	20,0	0,8	0,37	2,1
			2,0	5/64	140	5,5	36,0	50	164	30,0	1,2	0,46	2,6
			3,0	1/8	140	5,5	54,0	50	164	35,0	1,4	0,69	3,9
			4,0	5/32	140	5,5	72,0	50	164	45,0	1,8	0,92	5,2

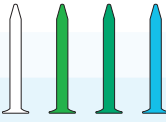
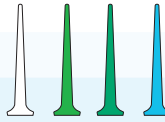
Cleats, Tracking profiles

BEHAbelt Cleats

Cross cleats increase conveyor carrying capacity and allow a standard flat belt to transport product on a horizontal plane, incline or vertical carrying service.

Advantages:

- Easily installed on PVC or Polyurethane base belts.
- Maximum connectivity to base belt with superior flexibility around pulleys.
- Provides a solid flight that resists fold over tough applications.
- Thin line cleats available for use with very small pulleys.

Quality PU	PU 80 A		PU 90 A	
Shore A - D	85 A		92 A	
Colour	white, green, blue green, sky blue			
FDA/EC/USDA compliant	yes, smooth		yes, smooth	
Foot width (mm)	12,5		10	
Height (mm)	25/38/50		20/30/40/50/60	

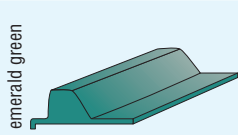
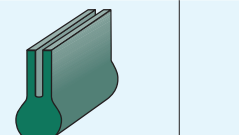
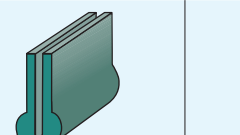
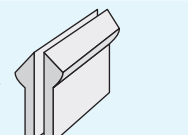
Belt edges

BEHAbelt belt edges

For stabilizing and guiding curved belts so called belt edges are used. In most case the profiles are stitched or glued on the curved belt. Through the profile bead the curved belt can be supported on the edges when running.

Advantages:

- High tear resistance
- High flexibility
- Low abrasion
- Individual colours possible

Description	Belt edge 3,5 x 37 mm	Belt edge 14 x 28 mm	Belt edge 8,8 x 18 mm	Belt edge 13x26 mm
Geometry / Colour				
Shore-hardness	84 A	80 A/88 A	80 A	80 A
Profile dimension mm	3,5x37	14x28/14x28	8,8x18	13 x 26

BEHAbelt Tracking profiles

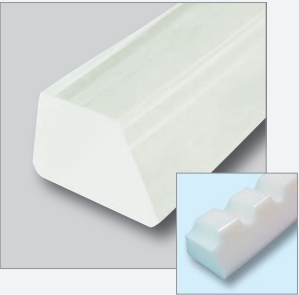
BEHAbelt offers a broad range of guiding profiles to assist in tracking your conveyor belt.

Advantages:

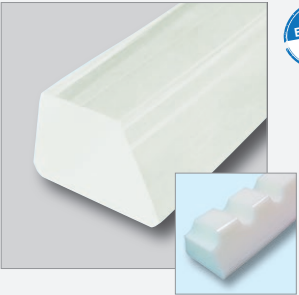
- All profiles are made from PU and can be supplied in various colours upon request.
- Approved for use in food contact applications in conformance with FDA/EC.
- Excellent bonding to PU or PVC belts with hot air or high frequency welding (PU 70 A).

Description	Colour	Shore-hardness	Profile dimension mm	Cross Section cm ²	approx. Weight kg/100 m	Standard Roll	
PU 60A	transparent smooth	65 A	6 x 4 (Y)	0,19	2,3	150	492
			8 x 5 (M)	0,32	4	150	492
			10 x 6 (Z)	0,48	6	150	492
PU 70 A	transparent smooth capri blue* smooth	76A	13 x 8 (A)	0,82	10	150	492
			17 x 11 (B)	1,46	18	100	328
			22 x 14 (C)	2,40	29	50	164

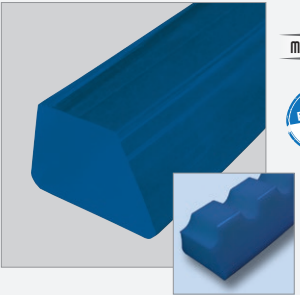
PU60A



PU70A



PU70A SAFE



All V-Guides in notched version on request



PU flex sidewalls

BEHAbelt PU flex sidewalls

The BEHAbelt PU Flex sidewalls for retaining bulk products are available in 2 versions.

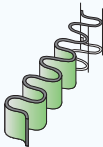
- Extremely flexible material with good abrasion and cut resistance.
- Very good and easy weldability on PU and PVC belts (using hot air or bonding cement).
- Approved for use in food contact applications in conformance with FDA/EC/USDA.

Version 1 Cut-to-width flat belts for direct welding of side walls on conveyor belts

Flat belt strip without foot for direct welding onto the conveyor belt.

Advantages:

- No waste since the flat belt strips are offered in pre-cut widths.
- Thus no costly storing of remnants or additional costs due to waste.

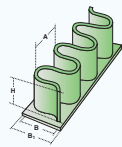
Description	Colour	Shore-hardness	Belt thickness		Belt width		Standard Roll	
			mm	inch	mm	inch	m	ft
PU 80 A Cut-to-width flat belts for side walls 	<div>white</div> <div>green</div> <div>sky blue</div> <div>blue green</div>	84 A	2,0	5/64	20	0,8	100	164
			2,0	5/64	30	1,2	100	164
			2,0	5/64	40	1,6	100	164
			2,0	5/64	50	2,0	100	164
			2,0	5/64	60	2,4	100	164
			2,0	5/64	80	3,2	100	164
			2,0	5/64	100	4,0	100	164
			2,0	5/64	120	4,8	100	164
			2,0	5/64	140	5,5	100	164
			2,0	5/64	140	5,5	100	164

Version 2 PU flex sidewalls with foot

Flat belt strip with foot for direct welding onto the conveyor belt!

Advantages:

- The version with foot allows for particularly small pulley diameters on account of the high degree of undulation of the wave profile.

Description	Colour	Shore-hardness	Height (mm) H	Height (inch) H	Wave width (mm) B	Base width (mm) B1	Pitch off waves (mm) A	Approx. Weight (g/m)	Standard Roll (m)	Min.pulley diameter-Ø (mm)	Recomm. pulley-Ø (mm)
PU 80 A Flex sidewalls 	<div>white</div> <div>green</div> <div>sky blue</div> <div>blue green</div> <div>capri blue</div>	84 A	20,00	0,79	23,00	32,00	25,40	174	100	35	70
			30,00	1,18	23,00	32,00	25,40	220	100	55	80
			40,00	1,57	23,00	32,00	25,40	265	100	75	90
			50,00	1,97	23,00	32,00	25,40	310	100	80	100
			60,00	2,36	45,00	55,00	50,80	445	100	90	110
			80,00	3,15	45,00	55,00	50,80	544	100	125	130
			100,00	3,94	45,00	55,00	50,80	642	100	155	160
			120,00	4,72	45,00	55,00	50,80	741	50	170	185
			120,00	4,72	45,00	55,00	50,80	741	50	170	185
			120,00	4,72	45,00	55,00	50,80	741	50	170	185

BEHAbelt offers even more

Smart conveying solutions

BEHA Innovation GmbH and its brand „BEHAbelt“ is a German, family owned company based in the Black Forest since over 40 years.

- Elastic monolithic conveyor belts and suitable accessories.
- Conveyor belt profiles made of PU and TPE.
- Welding tools & Controllers for conveying belt vulcanizers.
- Exclusive and fast realisation of your desired profile.

Conveyor belt profiles made of PU and TPE

BEHAbelt is your complete source for top quality Polyurethane and Polyester profile belts and accessories. We offer a complete line of V-belts and Round belts, as well as an extensive selection of special profiles and materials that can be customized to fit your requirements.

Some profiles have special features:

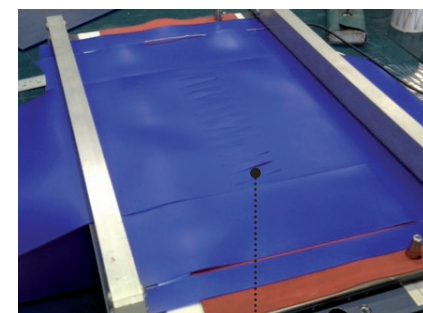
- FDA/EC conformity for hydrolysis-resistant conveying profiles with rough and finely textured surfaces.
- Antistatic dissipative profiles with outstanding mechanical properties.
- Profiles with exceptional low-temperature flexibility down to -30°C.
- Patented blend of materials „PLUS“ in order to optimise elongation for quality PU75A and PU85A for critical applications.
- „SAFE“ - metal detectable profiles for a high degree of food safety.

Welding tools

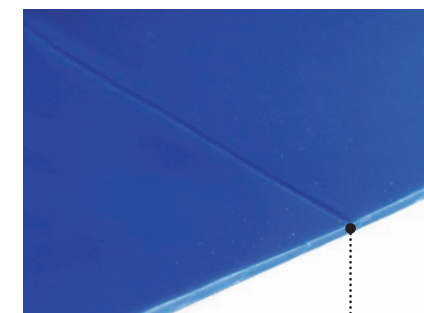
Every belt is only as good as his joining. Therefore we offer a great variety of welding instruments and tools to come along with the BEHAbelt profiles.



Connection methods for elastic monolithic flat belts



“Finger-joint hot press” (standard)



“Butt welding hot paddle” (endwise)



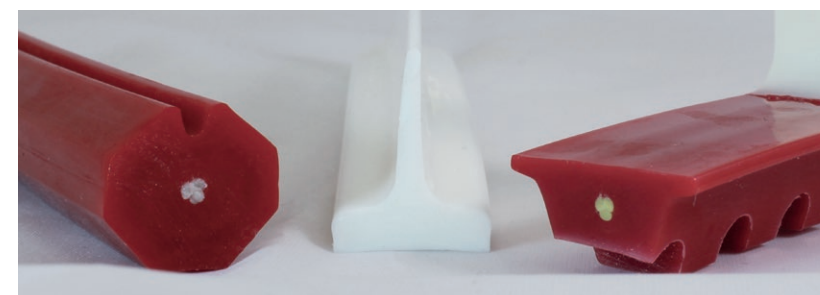
Hot air gun with PU/TPE electrodes

Custom-made profiles

If a standard profile is no longer sufficient for the demands of your application, then BEHAbelt offers you the unique option of developing a customised product.

Thanks to our in-house tool manufacturing shop with state-of-the-art equipment, we are able to produce custom profiles for you with extremely short lead times in order to meet your needs.

According to your specifications and your design!



Your specialist dealer / system supplier



TYMA CZ, s.r.o.
Na Pískách 731/12
CZ - 400 04 Trmice
Tel.: +420 475 655 010
E-mail: info@tyma.cz
[http: www.tyma.cz](http://www.tyma.cz)

PBEPM0000091-01 · 05/16

BEHA Innovation GmbH

In den Engematten 16 · 79286 Glottertal/Germany
Tel.: +49 (0) 76 84 / 907 - 0 · Fax: +49 (0) 76 84 / 907 - 101
E-Mail: info@behabelt.com · Internet: www.behabelt.com

