

**TYMA CZ, s.r.o.**

řemeny, převody a lineární technika

# Upínací pouzdra Clamping Bushes



**Označení výrobku / Product****Strana/Page****Upínací pouzdra**  
Clamping Elements

- |  |    |
|--|----|
| <b>1. Upínací pouzdra RCK</b><br>Clamping Elements RCK                                 | 4  |
| <b>2. Taper pouzdra</b><br>Taper Bushes  | 21 |
| <b>3. Náboje pro pouzdra TAPER a mezikroužky</b><br>Hubs for Taper Bushes and Adaptors | 23 |
| <b>4. Formulář pro výpočet řemenového převodu</b>                                      | 26 |

**Jiné rozměry řemenic a pouzder nabízíme na základě poptávky.**

Other dimensions pulleys and bushes can be manufactured on request.



**Materiál:** ST = ocel C43

**Doporučená tolerance:** Hřídel-h8, Náboj-H8

**Drsnost povrchu:** Rt max. 16µm

**Material:** ST = steel C43

**Recommended tolerances:** Shaft-h8, Hub-H8

**Clamping surfaces:** Rtmax. 16µm



*Příklad objednávky upínacích pouzder:*

**RCK15-30x55**

RCK15 ... Typ pouzdra

30x55 ... Rozměry pouzdra - vnitřní a vnější průměr

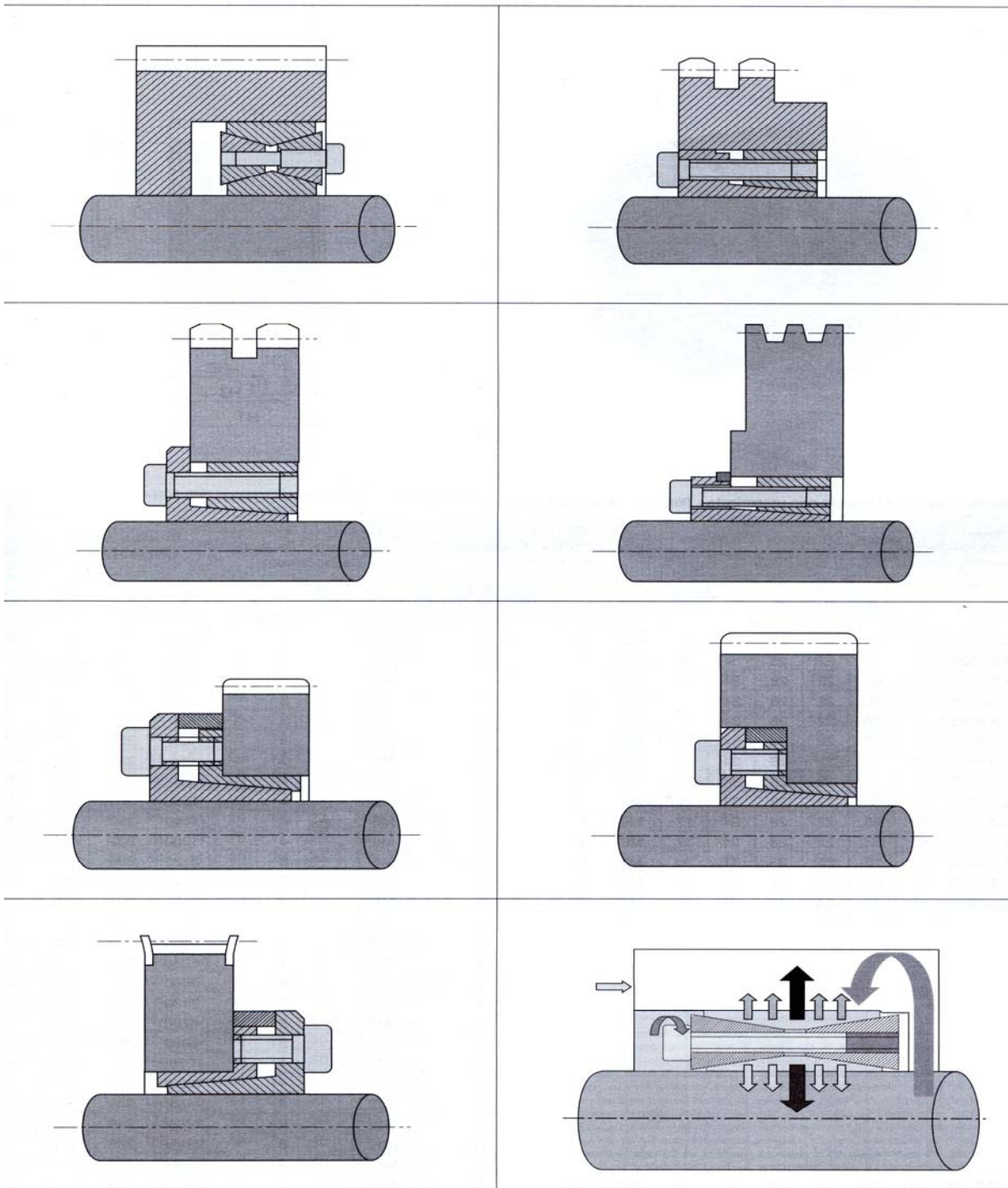
*Example of a order with specifications:*

**RCK15-30x55**

RCK15 ... Typ pouzdra

30x55 ... Rozměry pouzdra - vnitřní a vnější průměr

**Upínací pouzdra - příklady použití / Clamping Elements - Application**



Změna provedení, rozměrů a materiálu vyhrazena. / All dimensions and materials may be subject to change.

RCK 15 - Samostředící/Self-centring  
Pro střední zatížení/For Standard Hubs

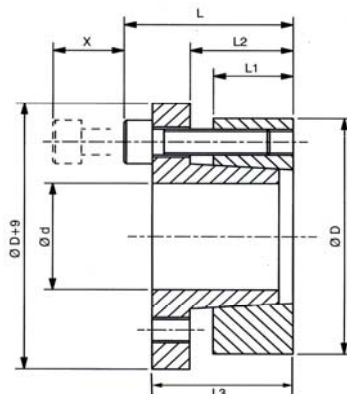
Doporučená tolerance: Hřídel-h8, Náboj-H8

Recommended tolerances: Shaft-h8, Hub-H8

Drsnost povrchu: Rt max. 16µm

Clamping surfaces: R<sub>t</sub>max. 16µm

Materiál: ST = ocel C43 / ST = steel C43



## Upínací pouzdra RCK15 - samostředící / Clamping Elements RCK15 - Self-centring

Označení / Obj.č. Part.No.	Rozměry / Dimensions						Moment/ Torque Mt [Nm]	Tlak/Pressure		Up. šrouby/Clamp. Screws			Uvolň./Extr.		Hmot/ Weight [kg]
	d [mm]	D [mm]	L1 [mm]	L2 [mm]	L3 [mm]	L [mm]		Hř./Shaft [N/mm <sup>2</sup> ]	Náb./Hub [N/mm <sup>2</sup> ]	Počet/ No.	Typ/ Type	Moment/ Torq. Nm	Typ/ Type	Počet/ No.	
RCK15-14x55	14	55	17	22	31	39	290	458	118	4	M8x25	41	M8	2	0.51
RCK15-16x55	16	55	17	22	31	39	320	400	118	4	M8x25	41	M8	2	0.49
RCK15-18x55	18	55	17	22	31	39	360	356	118	4	M8x25	41	M8	2	0.48
RCK15-19x55	19	55	17	22	31	39	380	337	118	4	M8x25	41	M8	2	0.47
RCK15-20x55	20	55	17	22	31	39	400	320	118	4	M8x25	41	M8	2	0.47
RCK15-22x55	22	55	17	22	31	39	440	290	118	4	M8x25	41	M8	2	0.45
RCK15-24x55	24	55	17	22	31	39	480	265	118	4	M8x25	41	M8	2	0.44
RCK15-25x55	25	55	17	22	31	39	500	255	118	4	M8x25	41	M8	2	0.43
RCK15-28x55	28	55	17	22	31	39	560	228	118	4	M8x25	41	M8	2	0.41
RCK15-30x55	30	55	17	22	31	39	600	213	118	4	M8x25	41	M8	2	0.40
RCK15-24x65	24	65	17	22	31	39	620	332	122	5	M8x25	41	M8	3	0.68
RCK15-25x65	25	65	17	22	31	39	640	320	122	5	M8x25	41	M8	3	0.63
RCK15-28x65	28	65	17	22	31	39	720	285	122	5	M8x25	41	M8	3	0.61
RCK15-30x65	30	65	17	22	31	39	770	267	122	5	M8x25	41	M8	3	0.58
RCK15-32x65	32	65	17	22	31	39	820	250	122	5	M8x25	41	M8	3	0.56
RCK15-35x65	35	65	17	22	31	39	900	228	122	5	M8x25	41	M8	3	0.53
RCK15-38x65	38	65	17	22	31	39	980	210	122	5	M8x25	41	M8	3	0.50
RCK15-40x65	40	65	17	22	31	39	1030	200	122	5	M8x25	41	M8	3	0.47
RCK15-30x80	30	80	20	25	33	41	1080	315	120	7	M8x25	41	M8	3	1.04
RCK15-32x80	32	80	20	25	33	41	1150	298	120	7	M8x25	41	M8	3	1.03
RCK15-35x80	35	80	20	25	33	41	1260	272	120	7	M8x25	41	M8	3	0.98
RCK15-38x80	38	80	20	25	33	41	1370	250	120	7	M8x25	41	M8	3	0.94
RCK15-40x80	40	80	20	25	33	41	1440	238	120	7	M8x25	41	M8	3	0.91
RCK15-42x80	42	80	20	25	33	41	1510	226	120	7	M8x25	41	M8	3	0.89
RCK15-45x80	45	80	20	25	33	41	1620	212	120	7	M8x25	41	M8	3	0.83
RCK15-48x80	48	80	20	25	33	41	1730	198	120	7	M8x25	41	M8	3	0.79
RCK15-50x80	50	80	20	25	33	41	1800	190	120	7	M8x25	41	M8	3	0.74
RCK15-40x80	40	80	20	25	33	41	2150	340	169	10	M8x25	41	M8	4	0.89
RCK15-45x80	45	80	20	25	33	41	2420	302	169	10	M8x25	41	M8	4	0.85
RCK15-50x80	50	80	20	25	33	41	2700	272	169	10	M8x25	41	M8	4	0.78



### RCK 13 - Samostředící/Self-centring

Pro střední zatížení/Standard General Purpose

Možný axiál.posuv náboje

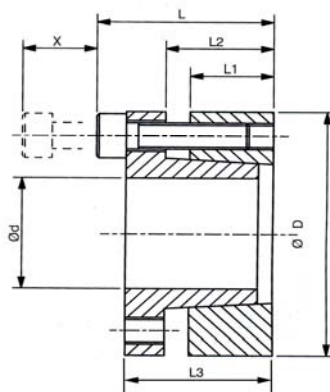
Doporučená tolerance: Hřídel-h8, Náboj-H8

Recommended tolerances: Shaft-h8, Hub-H8

Drsnost povrchu: Rt max. 16µm

Clamping surfaces: Rtmax. 16µm

Materiál: ST = ocel C43 / ST = steel C43



### Upínací pouzdra RCK13 - samostředící / Clamping Elements RCK13 - Self-centring

Označení / Obj.č. Part.No.	Rozměry / Dimensions						Moment/ Torque Mt [Nm]	Tlak/Pressure		Up.šrouby/Clamp.Screws			Uvolň./Extr.		Hmot/ Weight [kg]
	d [mm]	D [mm]	L1 [mm]	L2 [mm]	L3 [mm]	L [mm]		Hř./Shaft [N/mm2]	Náb./Hub [N/mm2]	Počet/ No.	Typ/ Type	Moment/ Torq.Nm	Typ/ Type	Počet/ No.	
RCK13-18x47	18	47	17	22	28	34	310	314	120	5	M6x20	14	M6	3	0.27
RCK13-19x47	19	47	17	22	28	34	330	300	120	5	M6x20	14	M6	3	0.27
RCK13-20x47	20	47	17	22	28	34	380	295	125	5	M6x20	14	M6	3	0.26
RCK13-22x47	22	47	17	22	28	34	410	270	125	5	M6x20	14	M6	3	0.25
RCK13-24x50	24	50	17	22	28	34	440	243	120	6	M6x20	14	M6	3	0.28
RCK13-25x50	25	50	17	22	28	34	560	285	140	6	M6x20	14	M6	3	0.27
RCK13-28x55	28	55	17	22	28	34	630	255	130	6	M6x20	14	M6	3	0.32
RCK13-30x55	30	55	17	22	28	34	660	235	130	6	M6x20	14	M6	3	0.30
RCK13-32x60	32	60	17	22	28	34	960	295	155	8	M6x20	14	M6	4	0.37
RCK13-35x60	35	60	17	22	28	34	1050	270	155	8	M6x20	14	M6	4	0.34
RCK13-38x65	38	65	17	22	28	34	1140	250	145	8	M6x20	14	M6	4	0.41
RCK13-40x65	40	65	17	22	28	34	1200	235	145	8	M6x20	14	M6	4	0.38
RCK13-45x75	45	75	20	25	33	41	2180	290	170	7	M8x25	35	M8	3	0.63
RCK13-50x80	50	80	20	25	33	41	2430	260	160	7	M8x25	35	M8	3	0.68
RCK13-55x85	55	85	20	25	33	41	3070	270	175	8	M8x25	35	M8	4	0.73
RCK13-60x90	60	90	20	25	33	41	3350	245	165	8	M8x25	35	M8	4	0.78
RCK13-65x95	65	95	20	25	33	41	4080	255	175	9	M8x25	35	M8	3	0.83
RCK13-70x110	70	110	24	30	40	50	6280	280	180	8	M10x30	70	M10	4	1,33
RCK13-75x115	75	115	24	30	40	50	6680	260	170	8	M10x30	70	M10	4	1,39
RCK13-80x120	80	120	24	30	40	50	7130	250	160	8	M10x30	70	M10	4	1,48
RCK13-85x125	85	125	24	30	40	50	8480	260	180	9	M10x30	70	M10	3	1,55
RCK13-90x130	90	130	24	30	40	50	9080	250	170	9	M10x30	70	M10	3	1,63
RCK13-95x135	95	135	24	30	40	50	10580	260	180	10	M10x30	70	M10	4	1,70
RCK13-100x145	100	145	26	32	44	56	13380	270	190	8	M12x35	125	M12	4	2,60
RCK13-110x155	110	155	26	32	44	56	14580	240	180	8	M12x35	125	M12	4	2,80
RCK13-120x165	120	165	26	32	44	56	17880	250	180	9	M12x35	125	M12	4	3,00
RCK13-130x180	130	180	34	40	52	64	29980	240	170	12	M12x35	125	M12	6	4,60
RCK13-140x190	140	190	34	40	54	68	26980	210	150	9	M14x40	190	M14	4	4,90
RCK13-150x200	150	200	34	40	54	68	32980	230	170	10	M14x40	190	M14	5	5,20
RCK13-160x210	160	210	34	40	54	68	37980	230	170	11	M14x40	190	M14	4	5,50
RCK13-170x225	170	225	44	50	64	78	44980	180	130	12	M14x40	190	M14	6	7,70
RCK13-180x235	180	235	44	50	64	78	46980	170	130	12	M14x40	190	M14	6	8,10

RCK 16 - Samostředící/Self-centring  
Pro střední zatížení/Standard General Purpose

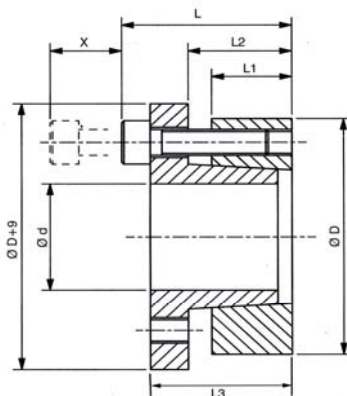
Doporučená tolerance: Hřídel-h8, Náboj-H8

Recommended tolerances: Shaft-h8, Hub-H8

Drsnost povrchu: Rt max. 16µm

Clamping surfaces: R<sub>t</sub>max. 16µm

Materiál: ST = ocel C43 / ST = steel C43

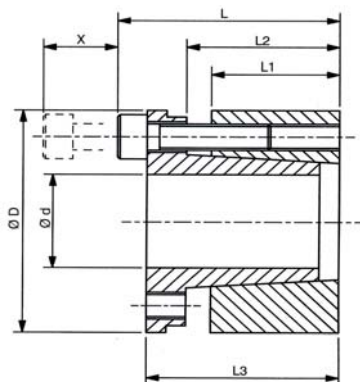


## Upínací pouzdra RCK16 - samostředící / Clamping Elements RCK16 - Self-centring

Označení / Obj.č. Part.No.	Rozměry / Dimensions						Moment/ Torque Mt [Nm]	Tlak/Pressure		Up. šrouby/Clamp. Screws			Uvolň./Extr.		Hmot/ Weight [kg]
	d [mm]	D [mm]	L1 [mm]	L2 [mm]	L3 [mm]	L [mm]		Hř./Shaft [N/mm2]	Náb./Hub [N/mm2]	Počet/ No.	Typ/ Type	Moment/ Torq. Nm	Typ/ Type	Počet/ No.	
RCK16-18x47	18	47	17	22	28	34	310	314	120	5	M6x20	14	M6	3	0.28
RCK16-19x47	19	47	17	22	28	34	330	300	120	5	M6x20	14	M6	3	0.27
RCK16-20x47	20	47	17	22	28	34	380	295	125	5	M6x20	14	M6	3	0.26
RCK16-22x47	22	47	17	22	28	34	410	270	125	5	M6x20	14	M6	3	0.25
RCK16-24x50	24	50	17	22	28	34	440	243	120	6	M6x20	14	M6	3	0.28
RCK16-25x50	25	50	17	22	28	34	560	285	140	6	M6x20	14	M6	3	0.27
RCK16-28x55	28	55	17	22	28	34	630	255	130	6	M6x20	14	M6	3	0.35
RCK16-30x55	30	55	17	22	28	34	660	235	130	6	M6x20	14	M6	3	0.32
RCK16-32x60	32	60	17	22	28	34	960	295	155	8	M6x20	14	M6	4	0.38
RCK16-35x60	35	60	17	22	28	34	1050	270	155	8	M6x20	14	M6	4	0.35
RCK16-38x65	38	65	17	22	28	34	1140	250	145	8	M6x20	14	M6	4	0.41
RCK16-40x65	40	65	17	22	28	34	1200	235	145	8	M6x20	14	M6	4	0.39
RCK16-45x75	45	75	20	25	33	41	2180	290	170	7	M8x25	35	M8	3	0.65
RCK16-50x80	50	80	20	25	33	41	2430	260	160	7	M8x25	35	M8	3	0.69
RCK16-55x85	55	85	20	25	33	41	3070	270	175	8	M8x25	35	M8	4	0.75
RCK16-60x90	60	90	20	25	33	41	3350	245	165	8	M8x25	35	M8	4	0.80
RCK16-65x95	65	95	20	25	33	41	4080	255	175	9	M8x25	35	M8	3	0.85
RCK16-70x110	70	110	24	30	40	50	6280	280	180	8	M10x30	70	M10	4	1,35
RCK16-75x115	75	115	24	30	40	50	6680	260	170	8	M10x30	70	M10	4	1,42
RCK16-80x120	80	120	24	30	40	50	7130	250	160	8	M10x30	70	M10	4	1,51
RCK16-85x125	85	125	24	30	40	50	8480	260	180	9	M10x30	70	M10	3	1,58
RCK16-90x130	90	130	24	30	40	50	9080	250	170	9	M10x30	70	M10	3	1,66
RCK16-95x135	95	135	24	30	40	50	10580	260	180	10	M10x30	70	M10	4	1,73
RCK16-100x145	100	145	26	32	44	56	13380	270	190	8	M12x35	125	M12	4	2,64
RCK16-110x155	110	155	26	32	44	56	14580	240	180	8	M12x35	125	M12	4	2,84
RCK16-120x165	120	165	26	32	44	56	17880	250	180	9	M12x35	125	M12	4	3,05
RCK16-130x180	130	180	34	40	52	64	29980	240	170	12	M12x35	125	M12	6	4,70
RCK16-140x190	140	190	34	40	54	68	26980	210	150	9	M14x40	190	M14	4	4,95
RCK16-150x200	150	200	34	40	54	68	32980	230	170	10	M14x40	190	M14	5	5,30
RCK16-160x210	160	210	34	40	54	68	37980	230	170	11	M14x40	190	M14	4	5,60
RCK16-170x225	170	225	44	50	64	78	44980	180	130	12	M14x40	190	M14	6	7,90
RCK16-180x235	180	235	44	50	64	78	46980	170	130	12	M14x40	190	M14	6	8,30

RCK 70 - Samostředící/Self-centring  
Pro vyšší zatížení/High Torque Units  
Možný axiál.posuv náboje

Doporučená tolerance: Hřídel-h8, Náboj-H8  
Recommended tolerances: Shaft-h8, Hub-H8  
Drsnost povrchu: Rt max. 16µm  
Clamping surfaces: Rtmax. 16µm  
Materiál: ST = ocel C43 / ST = steel C43



## Upínací pouzdra RCK70 - samostředící / Clamping Elements RCK70 - Self-centring

Označení / Obj.č. Part.No.	Rozměry / Dimensions						Moment/ Torque Mt [Nm]	Tlak/Pressure Hř./Shaft Nábo./Hub		Up.šrouby/Clamp.Screws			Uvolň./Extr.		Hmot/ Weight [kg]
	d [mm]	D [mm]	L1 [mm]	L2 [mm]	L3 [mm]	L [mm]		[N/mm2]	[N/mm2]	Počet/ No.	Typ/ Type	Moment/ Torq.Nm	Typ/ Type	Počet/ No.	
RCK70-19x47	19	47	26	31	39	45	350	228	98	4	M6x25	17	M6	2	0.38
RCK70-20x47	20	47	26	31	39	45	390	231	100	4	M6x25	17	M6	2	0.37
RCK70-22x47	22	47	26	31	39	45	440	220	95	4	M6x25	17	M6	2	0.36
RCK70-24x50	24	50	26	31	39	45	519	215	102	6	M6x25	17	M6	3	0.39
RCK70-25x50	25	50	26	31	39	45	590	230	105	6	M6x25	17	M6	3	0.38
RCK70-28x55	28	55	26	31	39	45	700	220	110	6	M6x25	17	M6	3	0.45
RCK70-30x55	30	55	26	31	39	45	760	200	120	6	M6x25	17	M6	3	0.42
RCK70-32x60	32	60	26	31	39	45	930	230	114	8	M6x25	17	M6	4	0.52
RCK70-35x60	35	60	26	31	39	45	1030	200	119	8	M6x25	17	M6	4	0.48
RCK70-38x65	38	65	26	31	39	45	1240	210	124	8	M6x25	17	M6	4	0.57
RCK70-40x65	40	65	26	31	39	45	1350	200	125	8	M6x25	17	M6	4	0.54
RCK70-42x75	42	75	30	36	47	55	2170	236	140	6	M8x30	41	M8	3	0.91
RCK70-45x75	45	75	30	36	47	55	2350	236	140	6	M8x30	41	M8	3	0.89
RCK70-48x80	48	80	30	36	47	55	2510	218	135	6	M8x30	41	M8	3	1.00
RCK70-50x80	50	80	30	36	47	55	2580	218	135	6	M8x30	41	M8	3	0.95
RCK70-55x85	55	85	30	36	47	55	3200	223	145	8	M8x30	41	M8	4	1,02
RCK70-60x90	60	90	30	36	47	55	3380	198	157	8	M8x30	41	M8	4	1,11
RCK70-65x95	65	95	30	36	47	55	4160	213	140	8	M8x30	41	M8	4	1,19
RCK70-70x110	70	110	40	46	57	67	6840	225	143	8	M10x35	83	M10	4	2,20
RCK70-75x115	75	115	40	46	62	72	7500	210	138	8	M10x35	83	M10	4	2,53
RCK70-80x120	80	120	40	46	62	72	8100	200	130	8	M10x35	83	M10	4	2,66
RCK70-85x125	85	125	40	46	62	72	9700	210	145	10	M10x35	83	M10	4	2,79
RCK70-90x130	90	130	40	46	62	72	10300	200	138	10	M10x35	83	M10	4	2,93
RCK70-95x135	95	135	40	46	62	72	12100	210	148	10	M10x35	83	M10	4	3,06
RCK70-100x145	100	145	46	52	77	89	15700	216	148	8	M12x45	145	M12	4	4,54
RCK70-110x155	110	155	46	52	77	89	17200	196	139	8	M12x45	145	M12	4	4,92
RCK70-120x165	120	165	46	52	77	89	22500	216	156	10	M12x45	145	M12	4	5,28
RCK70-130x180	130	180	46	52	77	89	24000	196	140	12	M12x45	145	M12	4	5,52
RCK70-140x190	140	190	51	59	84	90	30800	196	145	8	M14x45	230	M14	4	7,25
RCK70-150x200	150	200	51	59	84	90	37150	205	153	10	M14x45	230	M14	5	7,65
RCK70-160x210	160	210	51	59	84	90	40500	205	155	10	M14x45	230	M14	5	8,16
RCK70-170x225	170	225	51	59	84	90	40900	163	123	12	M14x45	230	M14	6	8,75
RCK70-180x235	180	235	51	59	84	90	41300	160	120	12	M14x45	230	M14	6	9,35



RCK 71 - Samostředící/Self-centring  
Pro vyšší zatížení/High Torque Units

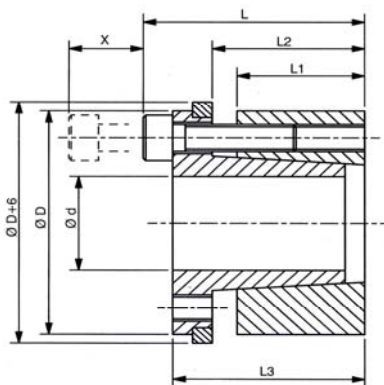
Doporučená tolerance: Hřídel-h8, Náboj-H8

Recommended tolerances: Shaft-h8, Hub-H8

Drsnost povrchu: Rt max. 16µm

Clamping surfaces: Rtmax. 16µm

Materiál: ST = ocel C43 / ST = steel C43



## Upínací pouzdra RCK71 - samostředící / Clamping Elements RCK71 - Self-centring

Označení / Obj.č. Part.No.	Rozměry / Dimensions						Moment/ Torque Mt [Nm]	Tlak/Pressure		Up.šrouby/Clamp.Screws			Uvolň./Extr.		Hmot/ Weight [kg]
	d [mm]	D [mm]	L1 [mm]	L2 [mm]	L3 [mm]	L [mm]		Hř./Shaft [N/mm2]	Náb./Hub [N/mm2]	Počet/ No.	Typ/ Type	Moment/ Torq.Nm	Typ/ Type	Počet/ No.	
RCK71-19x47	19	47	26	31	39	45	300	228	98	4	M6x25	17	M6	2	0.39
RCK71-20x47	20	47	26	31	39	45	320	231	98	4	M6x25	17	M6	2	0.38
RCK71-22x47	22	47	26	31	39	45	370	211	99	4	M6x25	17	M6	2	0.37
RCK71-24x50	24	50	26	31	39	45	430	220	110	6	M6x25	17	M6	3	0.41
RCK71-25x50	25	50	26	31	39	45	480	226	113	6	M6x25	17	M6	3	0.40
RCK71-28x55	28	55	26	31	39	45	590	207	108	6	M6x25	17	M6	3	0.48
RCK71-30x55	30	55	26	31	39	45	650	226	121	6	M6x25	17	M6	3	0.45
RCK71-32x60	32	60	26	31	39	45	800	201	117	8	M6x25	17	M6	4	0.56
RCK71-35x60	35	60	26	31	39	45	860	206	121	8	M6x25	17	M6	4	0.52
RCK71-38x65	38	65	26	31	39	45	1030	201	124	8	M6x25	17	M6	4	0.62
RCK71-40x65	40	65	26	31	39	45	1130	239	146	8	M6x25	17	M6	4	0.59
RCK71-42x75	42	75	30	36	47	55	1930	221	138	6	M8x30	41	M8	3	0.97
RCK71-45x75	45	75	30	36	47	55	1950	221	138	6	M8x30	41	M8	3	0.95
RCK71-48x80	48	80	30	36	47	55	2180	226	145	6	M8x30	41	M8	3	1.07
RCK71-50x80	50	80	30	36	47	55	2210	226	146	6	M8x30	41	M8	3	1.02
RCK71-55x85	55	85	30	36	47	55	2730	226	146	8	M8x30	41	M8	4	1.09
RCK71-60x90	60	90	30	36	47	55	2910	201	134	8	M8x30	41	M8	4	1.19
RCK71-65x95	65	95	30	36	47	55	3570	211	145	8	M8x30	41	M8	4	1.27
RCK71-70x110	70	110	40	46	57	67	5830	226	145	8	M10x35	83	M10	4	2.03
RCK71-75x115	75	115	40	46	62	72	6330	221	151	8	M10x35	83	M10	4	2.65
RCK71-80x120	80	120	40	46	62	72	6840	202	142	8	M10x35	83	M10	4	2.78
RCK71-85x125	85	125	40	46	62	72	8160	221	161	10	M10x35	83	M10	4	2.92
RCK71-90x130	90	130	40	46	62	72	8670	201	146	10	M10x35	83	M10	4	3.07
RCK71-95x135	95	135	40	46	62	72	10200	191	141	10	M10x35	83	M10	4	3.21
RCK71-100x145	100	145	46	52	77	89	13600	201	151	8	M12x45	145	M12	4	4.80
RCK71-110x155	110	155	46	52	77	89	14870	201	182	8	M12x45	145	M12	4	5.20
RCK71-120x165	120	165	46	52	77	89	19460	221	162	10	M12x45	145	M12	4	5.58
RCK71-130x180	130	180	46	52	77	89	20820	202	146	12	M12x45	145	M12	4	5.86
RCK71-140x190	140	190	51	59	84	90	25410	192	141	8	M14x45	230	M14	4	7.62
RCK71-150x200	150	200	51	59	84	90	30720	202	152	10	M14x45	230	M14	5	8.04
RCK71-160x210	160	210	51	59	84	90	33150	202	152	10	M14x45	230	M14	5	8.56
RCK71-170x225	170	225	51	59	84	90	34000	161	121	12	M14x45	230	M14	6	9.19
RCK71-180x235	180	235	51	59	84	90	34250	157	122	12	M14x45	230	M14	6	9.83

RCK 80 - Samostředící/Self-centring  
Min. rozdíl průměrů/Minimal Axial Space

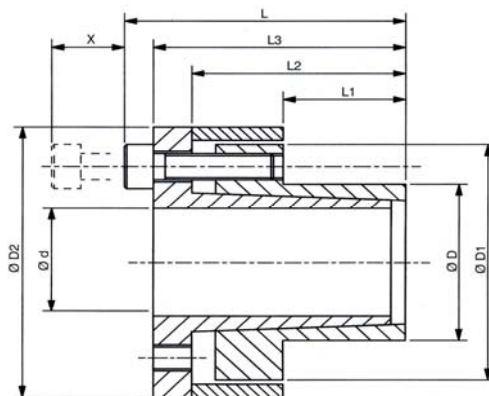
Doporučená tolerance: Hřídel-h8, Náboj-H8

Recommended tolerances: Shaft-h8, Hub-H8

Drsnost povrchu: Rt max. 16µm

Clamping surfaces: Rtmax. 16µm

Materiál: ST = ocel C43 / ST = steel C43



## Upínací pouzdra RCK80+A349 - samostředící / Clamping Elements RCK80 - Self-centring+A357

Označení / Obj.č. Part.No.	Rozměry / Dimensions								Moment/ Torque Mt [Nm]	Tlak/Pressure		Up. šrouby/Clamp. Screws			Uvolň./Extr.		Hmot/ Weight [kg]
	d [mm]	D [mm]	D1 [mm]	D2 [mm]	L1 [mm]	L2 [mm]	L3 [mm]	L [mm]		Hř./Shaft [N/mm2]	Náb./Hub [N/mm2]	Počet/ No.	Typ/ Type	Moment/ Torq. Nm	Typ/ Type	Počet/ No.	
RCK80-6x14	6	14	23	25	10	18,5	22,5	25,5	12	190	80	3	M3x10	2,2	M3	2	0.04
RCK80-8x15	8	15	24	27	12	21,5	25,5	29,5	29	205	110	3	M4x12	5	M4	2	0.05
RCK80-9x16	9	16	25	28	14	23,5	27,5	31,5	31	150	85	3	M4x12	5	M4	2	0.07
RCK80-10x16	10	16	25	28	14	23,5	27,5	31,5	35	140	85	3	M4x12	5	M4	2	0.06
RCK80-11x18	11	18	28	32	14	23,5	27,5	31,5	52	170	105	4	M4x12	5	M4	2	0.09
RCK80-12x18	12	18	28	32	14	23,5	27,5	31,5	58	150	100	4	M4x12	5	M4	2	0.08
RCK80-14x23	14	23	35	39	14	23,5	27,5	31,5	69	140	80	4	M4x12	5	M4	2	0.18
RCK80-15x24	15	24	40	45	16	29,5	36,5	42,5	170	158	98	4	M6x18	17	M6	2	0.22
RCK80-16x24	16	24	40	45	16	29,5	36,5	42,5	180	148	98	4	M6x18	17	M6	2	0.21
RCK80-18x26	18	26	42	47	19	32,5	39,5	45,5	200	180	125	4	M6x18	17	M6	2	0.24
RCK80-19x27	19	27	43	49	19	32,5	39,5	45,5	210	170	120	4	M6x18	17	M6	2	0.25
RCK80-20x28	20	28	44	50	19	32,5	39,5	45,5	220	160	115	4	M6x18	17	M6	2	0.26
RCK80-22x32	22	32	48	54	26	39,5	46,5	52,5	250	115	80	4	M6x18	17	M6	2	0.35
RCK80-24x34	24	34	50	56	26	39,5	46,5	52,5	395	146	102	6	M6x18	17	M6	3	0.36
RCK80-25x34	25	34	50	56	26	39,5	46,5	52,5	410	140	102	6	M6x18	17	M6	3	0.40
RCK80-28x39	28	39	55	61	25,5	39,5	46,5	52,5	465	135	98	6	M6x18	17	M6	3	0.42
RCK80-30x41	30	41	57	62	25,5	39,5	46,5	52,5	510	127	90	6	M6x18	17	M6	3	0.44
RCK80-32x43	32	43	59	65	25,5	39,5	46,5	52,5	705	146	108	8	M6x18	17	M6	4	0.46
RCK80-35x47	35	47	62	69	31,5	45,5	52,5	58,5	790	105	80	8	M6x18	17	M6	4	0.57
RCK80-38x50	38	50	66	72	31,5	45,5	52,5	58,5	860	100	76	8	M6x18	17	M6	4	0.60
RCK80-40x53	40	53	69	75	31,5	45,5	52,5	58,5	900	96	72	8	M6x18	17	M6	4	0.66
RCK80-42x55	42	55	71	78	31,5	45,5	52,5	58,5	940	90	70	8	M6x18	17	M6	4	0.71
RCK80-45x59	45	59	80	86	45	62,5	71	79	1840	110	85	8	M8x22	41	M8	4	1,14
RCK80-48x62	48	62	81	87	45	62,5	71	79	2000	105	80	8	M8x22	41	M8	4	1,40
RCK80-50x65	50	65	86	92	45	62,5	71	79	2100	100	75	8	M8x22	41	M8	4	1,58
RCK80-55x71	55	71	92	98	55	72,5	81	89	2580	85	65	9	M8x22	41	M8	3	2.00
RCK80-60x77	60	77	98	104	55	72,5	81	89	2800	75	60	9	M8x22	41	M8	3	2,30
RCK80-65x84	65	84	105	111	55	72,5	81	89	3050	70	55	9	M8x22	41	M8	3	2,50
RCK80-70x90	70	90	113	119	65	86,5	96,5	107	5250	90	70	9	M10x25	83	M10	3	2,83
RCK80-75x95	75	95	119	126	65	86,5	96,5	107	5600	80	65	9	M10x25	83	M10	3	3,10
RCK80-80x100	80	100	125	131	65	86,5	96,5	107	8000	100	80	12	M10x25	83	M10	4	3,27
RCK80-85x106	85	106	131	137	65	86,5	96,5	107	8500	95	75	12	M10x25	83	M10	4	3,50
RCK80-90x112	90	112	137	144	65	86,5	96,5	107	9000	90	75	12	M10x25	83	M10	4	3,80
RCK80-95x120	95	120	142	149	65	86,5	96,5	107	11000	100	80	14	M10x25	83	M10	4	4,20
RCK80-100x125	100	125	147	154	65	86,5	96,5	107	15000	120	95	18	M10x25	83	M10	4	4,90

RCK 11 - Samostředící/Self-centring  
Max.krouticí momenty/Maximum Torque Units

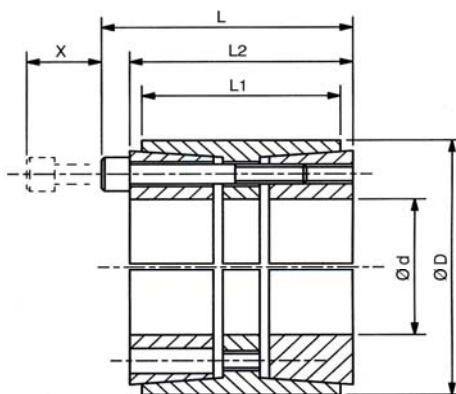
Doporučená tolerance: Hřídel-h8, Náboj-H8

Recommended tolerances: Shaft-h8, Hub-H8

Drsnost povrchu: Rt max. 16µm

Clamping surfaces: R<sub>t</sub>max. 16µm

Materiál: ST = ocel C43 / ST = steel C43



## Upínací pouzdra RCK11 - samostředící / Clamping Elements RCK11 - Self-centring

Označení / Obj.č. Part.No.	Rozměry / Dimensions					Moment/ Torque Mt [Nm]	Tlak/Pressure		Up.šrouby/Clamp.Screws			Uvolň./Extr.		Hmot/ Weight [kg]
	d [mm]	D [mm]	L1 [mm]	L2 [mm]	L [mm]		Hř./Shaft [N/mm2]	Náb./Hub [N/mm2]	Počet/ No.	Typ/ Type	Moment/ Torq.Nm	Typ/ Type	Počet/ No.	
RCK11-25x55	25	55	32	40	46	840	295	134	6	M6x35	17	M6	3	0,39
RCK11-28x55	28	55	32	40	46	940	264	134	6	M6x35	17	M6	3	0,37
RCK11-30x55	30	55	32	40	46	1000	246	134	6	M6x35	17	M6	3	0,35
RCK11-35x60	35	60	44	54	60	1360	174	101	7	M6x45	17	M6	3	0,62
RCK11-38x75	38	75	44	54	62	2740	296	150	7	M8x50	41	M8	3	1,02
RCK11-40x75	40	75	44	54	62	2880	281	150	7	M8x50	41	M8	3	0,96
RCK11-42x75	42	75	44	54	62	3030	268	150	7	M8x50	41	M8	3	0,91
RCK11-45x75	45	75	44	54	62	3240	250	150	7	M8x50	41	M8	3	0,89
RCK11-48x80	48	80	44	54	62	3950	207	124	8	M8x50	41	M8	3	1,10
RCK11-50x80	50	80	56	64	72	4150	200	98	8	M8x50	41	M8	3	1,30
RCK11-55x85	55	85	56	64	72	5150	205	104	9	M8x50	41	M8	3	1,40
RCK11-60x90	60	90	56	64	72	6200	202	106	10	M8x50	41	M8	4	1,50
RCK11-65x95	65	95	56	64	72	6750	187	100	10	M8x50	41	M8	4	1,60
RCK11-70x110	70	110	70	78	88	11500	223	114	10	M10x60	83	M10	4	3,00
RCK11-75x115	75	115	70	78	88	12300	223	114	10	M10x60	83	M10	4	3,20
RCK11-80x120	80	120	70	78	88	14500	215	115	11	M10x60	83	M10	4	3,50
RCK11-85x125	85	125	70	78	88	15400	215	115	12	M10x60	83	M10	5	3,70
RCK11-90x130	90	130	70	78	88	17800	208	115	12	M10x60	83	M10	5	3,90
RCK11-95x135	95	135	70	78	88	18700	208	115	12	M10x60	83	M10	5	4,10
RCK11-100x145	100	145	90	100	112	26300	200	107	11	M12x80	145	M12	4	6,00
RCK11-110x155	110	155	90	100	112	31800	198	110	12	M12x80	145	M12	5	7,00
RCK11-120x165	120	165	90	100	112	40400	212	120	14	M12x80	145	M12	5	7,80
RCK11-130x180	130	180	104	116	130	51500	192	112	12	M14x90	230	M14	5	10,00
RCK11-140x190	140	190	104	116	130	64700	208	124	14	M14x90	230	M14	7	11,00
RCK11-150x200	150	200	104	116	130	74200	208	127	15	M14x90	230	M14	6	12,00
RCK11-160x210	160	210	104	116	130	84500	208	128	16	M14x90	230	M14	7	13,00
RCK11-170x225	170	225	134	148	164	108200	182	113	14	M16x110	355	M16	6	18,00
RCK11-180x235	180	235	134	148	164	123250	184	115	15	M16x110	355	M16	7	20,00
RCK11-190x250	190	250	134	148	164	133800	186	116	16	M16x110	355	M16	7	22,00
RCK11-200x260	200	260	134	148	164	146000	177	112	16	M16x110	355	M16	7	24,00
RCK11-220x285	220	285	134	148	164	181000	188	115	18	M16x110	355	M16	8	27,00
RCK11-240x305	240	305	134	148	164	218000	184	119	20	M16x110	355	M16	9	30,00
RCK11-260x325	260	325	134	148	164	250000	178	117	21	M16x110	355	M16	10	33,00
RCK11-280x355	280	355	165	177	197	360000	185	117	18	M20x130	690	M20	8	48,00
RCK11-300x375	300	375	165	177	197	428000	192	123	20	M20x130	690	M20	9	52,00

RCK 60 - Samostředící/Self-centring  
Kompaktní pouzdra/Compact Units

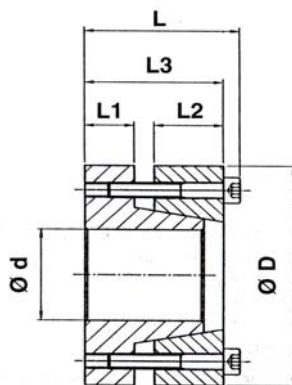
Doporučená tolerance: Hřídel-h8, Náboj-H8

Recommended tolerances: Shaft-h8, Hub-H8

Drsnost povrchu: Rt max. 16µm

Clamping surfaces: R<sub>t</sub>max. 16µm

Materiál: ST = ocel C43 / ST = steel C43



## Upínací pouzdra RCK60 - samostředící / Clamping Elements RCK60 - Self-centring

Označení / Obj.č. Part.No.	Rozměry / Dimensions						Moment/ Torque Mt [Nm]	Ax.síla Ax.Force F [N]	Tlak/Pressure		Up.šrouby/Clamp.Screws			Uvolň./Extr.	
	d [mm]	D [mm]	L1 [mm]	L2 [mm]	L3 [mm]	L [mm]			Hř./Shaft [N/mm2]	Náb./Hub [N/mm2]	Počet/ No.	Typ/ Type	Moment/ Torq.Nm	Typ/ Type	Počet/ No.
RCK60-20x47	20	47	10	14	28	34	245	29400	210	93	5	M6x25	17	M6	3
RCK60-22x47	22	47	10	14	28	34	265	30000	196	93	5	M6x25	17	M6	3
RCK60-24x50	24	50	10	14	28	34	370	32300	215	108	6	M6x25	17	M6	3
RCK60-25x50	25	50	10	14	28	34	390	33300	210	108	6	M6x25	17	M6	3
RCK60-30x55	30	55	10	14	28	34	480	41200	186	98	6	M6x25	17	M6	3
RCK60-35x60	35	60	10	14	28	34	735	44100	186	108	8	M6x25	17	M6	4
RCK60-38x65	38	65	10	14	28	34	790	46100	206	103	8	M6x25	17	M6	4
RCK60-40x65	40	65	10	14	28	34	830	47000	186	103	8	M6x25	17	M6	4
RCK60-42x75	42	75	12	18	35	43	1450	66000	225	132	7	M8x30	41	M8	4
RCK60-45x75	45	75	12	18	35	43	1560	70000	220	132	7	M8x30	41	M8	4
RCK60-50x80	50	80	12	18	35	43	1650	72000	206	127	7	M8x30	41	M8	4
RCK60-55x85	55	85	12	18	35	43	2250	80000	210	132	8	M8x30	41	M8	4
RCK60-60x90	60	90	12	18	35	43	2450	83000	186	122	8	M8x30	41	M8	4
RCK60-65x95	65	95	12	18	35	43	2890	90000	200	132	9	M8x30	41	M8	3
RCK60-70x110	70	110	16	24	46	56	4700	130000	220	140	8	M10x40	83	M10	4

RCK 61 - Samostředící/Self-centring  
Malé rozměry pouzdra/Compact Small Units

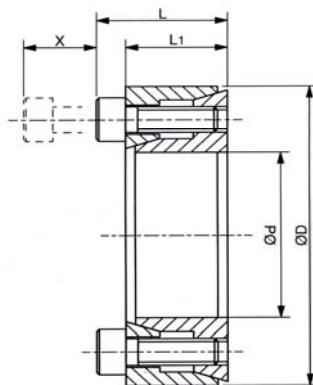
Doporučená tolerance: Hřídel-h8, Náboj-H8

Recommended tolerances: Shaft-h8, Hub-H8

Drsnost povrchu: Rt max. 16µm

Clamping surfaces: R<sub>t</sub>max. 16µm

Materiál: ST = ocel C43 / ST = steel C43



## Upínací pouzdra RCK61 - samostředící / Clamping Elements RCK61 - Self-centring

Označení / Obj.č. Part.No.	Rozměry / Dimensions				Moment/ Torque Mt [Nm]	Tlak/Pressure		Up.šrouby/Clamp.Screws			Uvolň./Extr.		Hmot/ Weight [kg]
	d [mm]	D [mm]	L1 [mm]	L [mm]		Hř./Shaft [N/mm2]	Náb./Hub [N/mm2]	Počet/ No.	Typ/ Type	Moment/ Torq.Nm	Typ/ Type	Počet/ No.	
RCK61-10x20	10	20	13	15,5	15	110	55	4	M2,5x12	1,2	M2,5	2	0.08
RCK61-12x22	12	22	13	15,5	20	90	50	4	M2,5x12	1,2	M2,5	2	0.09
RCK61-14x26	14	26	17	20	35	105	55	4	M3x16	2,1	M3	2	0.12
RCK61-15x28	15	28	17	20	40	100	50	4	M3x16	2,1	M3	2	0.13
RCK61-16x32	16	32	17	21	70	130	65	4	M4x16	4,9	M4	2	0.15
RCK61-18x35	18	35	21	25	80	115	60	4	M4x20	4,9	M4	2	0.20
RCK61-19x35	19	35	21	25	85	110	60	4	M4x20	4,9	M4	2	0.19
RCK61-20x38	20	38	21	26	220	220	115	6	M5x20	9,7	M5	3	0.21
RCK61-22x40	22	40	21	26	240	200	110	6	M5x20	9,7	M5	3	0.22
RCK61-24x47	24	47	26	32	380	220	110	6	M6x25	16,2	M6	3	0.31
RCK61-25x47	25	47	26	32	390	210	110	6	M6x25	16,2	M6	3	0.30



RCK 40 - Nesamostředící/Not self-centring  
Kompaktní pouzdra/Compact Units

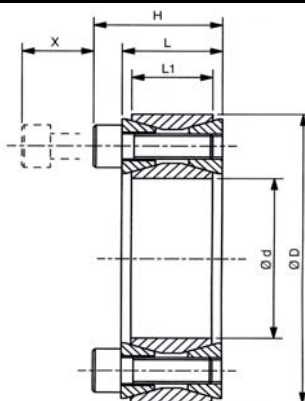
Doporučená tolerance: Hřídel-h9, Náboj-H9

Recommended tolerances: Shaft-h9, Hub-H9

Drsnost povrchu: Rt max. 16µm

Clamping surfaces: Rtmax. 16µm

Materiál: ST = ocel C43 / ST = steel C43



## Upínací pouzdra RCK40 - nesamostředící / Clamping Elements RCK40 - Not self-centring

Označení / Obj.č. Part.No.	Rozměry / Dimensions					Moment/ Torque Mt [Nm]	Tlak/Pressure		Up.šrouby/Clamp.Screws			Uvolň./Extr.		Hmot/ Weight [kg]
	d [mm]	D [mm]	L1 [mm]	L3 [mm]	L [mm]		Hř./Shaft [N/mm2]	Náb./Hub [N/mm2]	Počet/ No.	Typ/ Type	Moment/ Torq.Nm	Typ/ Type	Počet/ No.	
RCK40-19x47	19	47	17	20	28	255	220	90	8	M6x18	14	M8	2	0.25
RCK40-20x47	20	47	17	20	28	270	210	90	8	M6x18	14	M8	2	0.24
RCK40-22x47	22	47	17	20	28	300	195	90	8	M6x18	14	M8	2	0.23
RCK40-24x50	24	50	17	20	28	360	195	95	9	M6x18	14	M8	3	0.26
RCK40-25x50	25	50	17	20	28	380	190	95	9	M6x18	14	M8	3	0.25
RCK40-28x55	28	55	17	20	28	500	187	96	10	M6x18	14	M8	4	0.30
RCK40-30x55	30	55	17	20	28	530	176	96	10	M6x18	14	M8	4	0.29
RCK40-32x60	32	60	17	20	28	630	192	105	12	M6x18	14	M8	4	0.34
RCK40-35x60	35	60	17	20	28	700	180	105	12	M6x18	14	M8	4	0.32
RCK40-38x65	38	65	17	20	28	860	183	107	14	M6x18	14	M8	4	0.36
RCK40-40x65	40	65	17	20	28	910	180	110	14	M6x18	14	M8	4	0.34
RCK40-42x75	42	75	20	24	34	1500	226	125	12	M8x22	35	M10	4	0.60
RCK40-45x75	45	75	20	24	34	1610	210	125	12	M8x22	35	M10	4	0.57
RCK40-48x80	48	80	20	24	34	1700	196	115	12	M8x22	35	M10	4	0.63
RCK40-50x80	50	80	20	24	34	1770	190	115	12	M8x22	35	M10	4	0.60
RCK40-55x85	55	85	20	24	34	2270	200	130	14	M8x22	35	M10	4	0.63
RCK40-60x90	60	90	20	24	34	2470	180	120	14	M8x22	35	M10	4	0.69
RCK40-65x95	65	95	20	24	34	3040	190	130	16	M8x22	35	M12	4	0.73
RCK40-70x110	70	110	24	28	40	4600	210	130	14	M10x25	70	M12	4	1,26
RCK40-75x115	75	115	24	28	40	4900	195	125	14	M10x25	70	M12	4	1,33
RCK40-80x120	80	120	24	28	40	5200	180	120	14	M10x25	70	M12	4	1,40
RCK40-85x125	85	125	24	28	40	6300	195	130	16	M10x25	70	M12	4	1,49
RCK40-90x130	90	130	24	28	40	6600	180	125	16	M10x25	70	M12	4	1,53
RCK40-95x135	95	135	24	28	40	7900	195	135	18	M10x25	70	M12	4	1,62
RCK40-100x145	100	145	26	33	47	9600	195	135	14	M12x30	125	M14	4	2,01
RCK40-110x155	110	155	26	33	47	10500	180	125	14	M12x30	125	M14	4	2,15
RCK40-120x165	120	165	26	33	47	13100	185	135	16	M12x30	125	M14	4	2,35
RCK40-130x180	130	180	34	38	52	17600	165	115	20	M12x35	125	M14	4	3,51
RCK40-140x190	140	190	34	38	52	20900	165	125	22	M12x35	125	M14	4	3,85
RCK40-150x200	150	200	34	38	52	24200	170	125	24	M12x35	125	M14	4	4,07
RCK40-160x210	160	210	34	38	52	28000	170	130	26	M12x35	125	M14	4	4,30
RCK40-170x225	170	225	38	44	60	32800	160	120	22	M14x40	190	M18	4	5,78
RCK40-180x235	180	235	38	44	60	37800	165	125	24	M14x40	190	M16	4	6,05
RCK40-190x250	190	250	46	52	68	46500	150	115	28	M14x45	190	M16	4	8,25
RCK40-200x260	200	260	46	52	68	52500	150	115	30	M14x45	190	M16	5	8,65
RCK40-220x285	220	285	50	56	74	68000	150	115	26	M16x50	295	M18	4	11,25

**RCK 45 - Nesamostředící / Not self-centring**  
**Pro střední zatížení / Standard General Purpose**

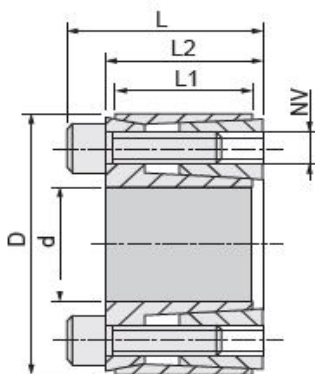
**Doporučená tolerance: Hřídel-h8, Náboj-H8**

Recommended tolerances: Shaft-h8, Hub-H8

**Drsnost povrchu: Rt max. 16µm**

Clamping surfaces: Rtmax. 16µm

**Materiál: ST = ocel C43 / ST = steel C43**



**Upínací pouzdra RCK45 - samostředící / Clamping Elements RCK45 - Self-centring**

Označení / Obj.č. Part.No.	Rozměry / Dimensions					Moment/ Torque Mt [Nm]	Tlak/Pressure		Up.šrouby/Clamp.Screws			Uvolň./Extr.		Hmot/ Weight [kg]
	d [mm]	D [mm]	L1 [mm]	L2 [mm]	L [mm]		Hř./Shaft [N/mm2]	Náb./Hub [N/mm2]	Počet/ No.	Typ/ Type	Moment/ Torq.Nm	Typ/ Type	Počet/ No.	
RCK45-18x40	18	40	14,7	18	24	165	185	83	4	M6x16	17	M6	2	0,18
RCK45-19x41	19	41	14,7	18	24	174	176	81	4	M6x16	17	M6	2	0,20
RCK45-20x42	20	42	14,7	18	24	183	167	79	4	M6x16	17	M6	2	0,20
RCK45-24x46	24	46	14,7	18	24	329	209	109	6	M6x16	17	M6	3	0,23
RCK45-25x47	25	47	14,7	18	24	343	200	106	6	M6x16	17	M6	3	0,24
RCK45-28x50	28	50	14,7	18	24	384	179	100	6	M6x16	17	M6	3	0,24
RCK45-30x52	30	52	14,7	18	24	412	167	96	6	M6x16	17	M6	3	0,27
RCK45-35x57	35	57	18	22	28	480	117	78	6	M6x18	17	M6	3	0,28
RCK45-38x60	38	60	18	22	28	695	143	91	8	M6x18	17	M6	4	0,30
RCK45-40x62	40	62	18	22	28	732	136	88	8	M6x18	17	M6	4	0,31
RCK45-42x70	42	70	23,5	28	36	1427	185	111	8	M8x25	42	M8	4	0,50
RCK45-45x73	45	73	23,5	28	36	1529	172	106	8	M8x25	42	M8	4	0,53
RCK45-48x76	48	76	23,5	28	36	1631	161	102	8	M8x25	42	M8	4	0,59
RCK45-50x78	50	78	23,5	28	36	1699	155	99	8	M8x25	42	M8	4	0,62
RCK45-55x83	55	83	23,5	28	36	1869	141	93	8	M8x25	42	M8	4	0,64
RCK45-60x88	60	88	23,5	28	36	2039	129	88	8	M8x25	42	M8	4	0,69
RCK45-70x105	70	105	30	35	45	3759	137	91	8	M10x30	83	M10	4	1,25
RCK45-80x115	80	115	30	35	45	4296	120	83	8	M10x30	83	M10	4	1,40
RCK45-95x138	95	138	30	35	45	6377	126	83	10	M10x30	83	M10	4	1,70

RCK 50 - Nesamostředící/Not self-centring  
Upínací kroužky/Clamping Rings

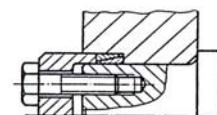
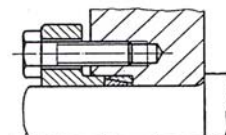
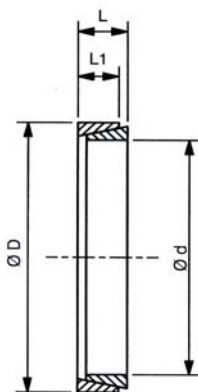
Doporučená tolerance:  $d < 38\text{mm}$  h6/H7,  $d > 40\text{mm}$  h8/H8

Recommended tolerances:  $d < 38\text{mm}$  h6/H7,  $d > 40\text{mm}$  h8/H8

Drsnost povrchu: Rt max. 16µm

Clamping surfaces: Rtmax. 16µm

Materiál: ST = ocel C43 / ST = steel C43



## Upínací pouzdra RCK50 - nesamostředící / Clamping Elements RCK50 - Not self-centring

Označení / Obj.č. Part.No.	Rozměry / Dimensions				Ax.síla Ax. Force * F [kN]	Moment/ Torque Mt [Nm]	Tlak/Pressure		Hmot/ Weight [kg]
	d [mm]	D [mm]	L1 [mm]	L [mm]			Hř./Shaft [N/mm <sup>2</sup> ]	Náb./Hub [N/mm <sup>2</sup> ]	
RCK50-6x9	6	9	3,7	4,5	3,8	2,4	115	75	1,20
RCK50-7x10	7	10	3,7	4,5	3,9	3	105	70	1,40
RCK50-8x11	8	11	3,7	4,5	5,3	4,7	120	90	1,50
RCK50-9x12	9	12	3,7	4,5	15,6	7,9	140	105	1,70
RCK50-10x13	10	13	3,7	4,5	15,6	9,5	135	105	1,80
RCK50-12x15	12	15	3,7	4,5	15,6	11,4	115	90	2,20
RCK50-13x16	13	16	3,7	4,5	15,6	13,1	110	90	2,30
RCK50-14x18	14	18	5,3	6,3	25,4	22,3	115	90	4,90
RCK50-15x19	15	19	5,3	6,3	25,4	24,3	110	85	5,30
RCK50-16x20	16	20	5,3	6,3	25,4	27,3	105	85	5,50
RCK50-17x21	17	21	5,3	6,3	25,4	29,8	105	85	5,80
RCK50-18x22	18	22	5,3	6,3	25,4	32,4	100	80	6,10
RCK50-19x24	19	24	5,3	6,3	36	49	140	110	7,80
RCK50-20x25	20	25	5,3	6,3	36	53	135	105	8,20
RCK50-22x26	22	26	5,3	6,3	36	66	135	115	7,30
RCK50-24x28	24	28	5,3	6,3	36	73	130	110	8,00
RCK50-25x30	25	30	5,3	6,3	36	72	115	95	10,10
RCK50-28x32	28	32	5,3	6,3	36	86	115	100	12,0
RCK50-30x35	30	35	5,3	6,3	36	91	100	85	10,0
RCK50-32x36	32	36	5,3	6,3	45	131	130	115	17,0
RCK50-35x40	35	40	6	7	54	171	125	110	20,0
RCK50-36x42	36	42	6	7	54	169	115	100	21,0
RCK50-38x44	38	44	6	7	54	181	110	95	23,0
RCK50-40x45	40	45	6,6	8	66	231	115	105	28,0
RCK50-42x48	42	48	6,6	8	66	235	110	95	42,0
RCK50-45x52	45	52	8,6	10	99	353	105	95	45,0
RCK50-48x55	48	55	8,6	10	132	572	155	135	47,0
RCK50-50x57	50	57	8,6	10	132	602	150	130	50,0
RCK50-55x62	55	62	8,6	10	132	670	140	125	67,0
RCK50-56x64	56	64	10,4	12	157,2	790	130	115	72,0
RCK50-60x68	60	68	10,4	12	157,2	860	125	110	76,0
RCK50-63x71	63	71	10,4	12	157,2	910	120	105	78,00
RCK50-65x73	65	73	10,4	12	157,2	950	115	100	110,00
RCK50-70x79	70	79	12,2	14	209,6	1380	125	110	114,00
RCK50-75x84	75	84	12,2	14	209,6	1450	115	100	118,00
RCK50-80x91	80	91	15	17	290	2200	125	105	187,00

\* Axiální síla nutná pro upnutí / Axial Force necessary to clamp

## RCK 19 - Nesamostředící/Not self-centring

### Vnější upínací pouzdra/Clamping Discs

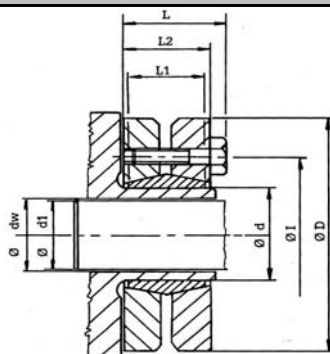


Doporučená tolerance: d-h8, dw<30 /H6/j6, dw>30mm H6/h6  
Recommended tolerances: d-h8, dw<30 H6/j6, dw>30mm H6/h6

Drsnost povrchu: Rt max. 16µm

Clamping surfaces:  $R_{tmax}$ . 16 $\mu$ m

**Materiál:** ST = ocel C43 / ST = steel C43



## Upínací pouzdra RCK19 - samostředící / Clamping Elements RCK19 - Self-centring

Označení / Obj.č. Part.No.	Rozměry / Dimensions							Tlak/ Press. [N/mm2]	Moment/ Torque Mt [Nm]	Max. dw-d1 [mm]	Up.srouby/Clamp.Screws			Hmot/ Weight [kg]
	d [mm]	D [mm]	dw [mm]	L1 [mm]	L2 [mm]	L [mm]	I [mm]				Počet/ No.	Typ/ Type	Moment/ Torq.Nm	
RCK19-24x50	24	50	19 20 21	14	19,5	23	36	286	170 210 250	0,017	M5x18	6	4	0,2
RCK19-30x60	30	60	24 25 26	16	21,5	25	44	233	300 340 380	0,017	M5x18	7	4	0,3
RCK19-36x72	36	72	28 30 31	18	23,5	27,5	52	307	440 570 630	0,032	M6x20	5	12	0,4
RCK19-44x80	44	80	32 35 36	20	25,5	29,5	61	317	620 780 860	0,032	M6x20	7	12	0,6
RCK19-50x90	50	90	38 40 42	22	27,5	31,5	70	289	940 1160 1380	0,032	M6x25	8	12	0,8
RCK19-55x100	55	100	42 45 48	23	30,5	34,5	75	252	1160 1520 1880	0,032	M6x25	8	12	1,1
RCK19-62x110	62	110	48 50 52	23	30,5	34,5	86	279	1850 2200 2400	0,048	M6x25	10	12	1,3
RCK19-68x115	68	115	50 55 60	23	30,5	34,5	86	255	2000 2500 3150	0,048	M6x25	10	12	1,4
RCK19-75x138	75	138	55 60 65	25	32,5	37,8	100	273	2500 3200 3950	0,048	M8x30	7	30	1,7
RCK19-80x145	80	145	60 65 70	25	32,5	37,8	100	256	3200 3900 4600	0,048	M8x30	7	30	1,9
RCK19-90x155	90	155	65 70 75	30	39	44,3	114	271	4750 6000 7250	0,048	M8x35	10	30	3,3
RCK19-100x170	100	170	70 75 80	34	44	49,3	124	258	6900 7500 9000	0,048	M8x35	12	30	4,7
RCK19-110x185	110	185	75 80 85	39	50	56,4	136	244	7200 9000 10800	0,048	M10x40	9	59	5,9
RCK19-125x215	125	215	85 90 95	42	54	60,4	160	266	11000 13000 15000	0,069	M10x40	12	59	8,5
RCK19-140x230	140	230	95 100 105	46	60,5	68	175	264	15100 17600 20100	0,069	M12x45	10	100	9,0
RCK19-155x265	155	265	105 110 115	50	64,5	72	192	263	22000 25000 28000	0,069	M12x50	12	100	11,0
RCK19-165x290	165	290	115 120 125	56	71	81	210	277	31000 35000 39000	0,069	M16x55	8	250	15,0
RCK19-175x300	175	300	125 130 135	56	71	81	220	261	36000 41000 45000	0,079	M16x55	8	250	15,8
RCK19-185x330	185	330	135 140 145	71	86	96	236	237	52000 57000 62000	0,09	M16x70	10	250	21,0

## RCK 95

### Hřídelové spojky / Shaft Couplings

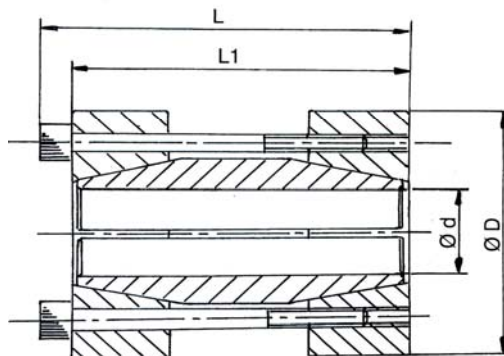
Doporučená tolerance: Hřídel-h8

Recommended tolerances: Shaft-h8

Drsnost povrchu: Rt max. 16µm

Clamping surfaces: Rtmax. 16µm

Material: ST = ocel C43 / ST = steel C43



### Upínací pouzdra RCK95 - hřídelové spojky / Clamping Elements RCK95 - Shaft Couplings

Označení / Obj.č. Part.No.	Rozměry / Dimensions				Moment/ Torque Mt [Nm]	Tlak/Pressure Hř./Shaft [N/mm2]	Up.šrouby/Clamp.Screws			Hmot/ Weight [kg]
	d [mm]	D [mm]	L1 [mm]	L [mm]			Počet/ No.	Typ/ Type	Moment/ Torq.Nm	
RCK95-17x50	17	50	50	56	200	110	4	M6x40	17	0,46
RCK95-18x50	18	50	50	56	220	110	4	M6x40	17	0,45
RCK95-19x50	19	50	50	56	230	110	4	M6x40	17	0,44
RCK95-20x50	20	50	50	56	240	105	4	M6x40	17	0,44
RCK95-24x55	24	55	60	66	290	120	4	M6x50	17	0,65
RCK95-25x55	25	55	60	66	450	110	6	M6x50	17	0,63
RCK95-28x60	28	60	60	66	510	110	6	M6x50	17	0,75
RCK95-30x60	30	60	60	66	550	105	6	M6x50	17	0,71
RCK95-32x63	32	63	60	66	580	90	6	M6x50	17	0,73
RCK95-35x75	35	75	75	83	790	105	4	M8x60	41	1,33
RCK95-38x75	38	75	75	83	850	100	4	M8x60	41	1,20
RCK95-40x75	40	75	75	83	900	95	4	M8x60	41	1,19
RCK95-42x78	42	78	75	83	950	90	4	M8x60	41	1,28
RCK95-45x85	45	85	85	93	1520	110	6	M8x70	41	1,72
RCK95-48x90	48	90	85	93	1620	100	6	M8x70	41	1,88
RCK95-50x90	50	90	85	93	1690	95	6	M8x70	41	1,90
RCK95-55x94	55	94	85	93	2470	110	8	M8x70	41	2,00
RCK95-60x100	60	100	85	93	2710	95	8	M8x70	41	2,17
RCK95-65x105	65	105	85	93	2930	90	8	M8x70	41	3,95
RCK95-70x115	70	115	100	110	3770	90	6	M10x80	83	5,25
RCK95-*75x125	*75	125	100	110	4030	80	6	M10x80	83	5,46
RCK95-*80x125	*80	125	100	110	4300	70	6	M10x80	83	5,30



RCK 25 - Nesamostředící/Not self-centring

RCK 26 - Samostředící/Self-centring

Jednoduchá pouzdra s maticí/Sindle Nut Clampings

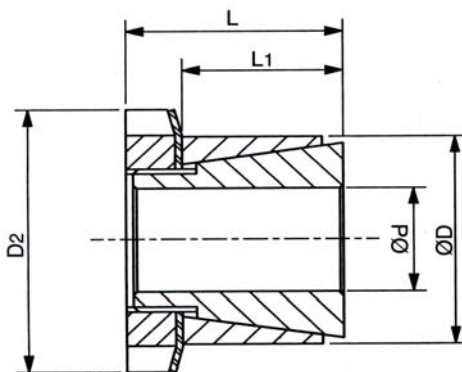
Doporučená tolerance: Hřídel-h8, Náboj-H8

Recommended tolerances: Shaft-h8, Hub-H8

Drsnost povrchu: Rt max. 16µm

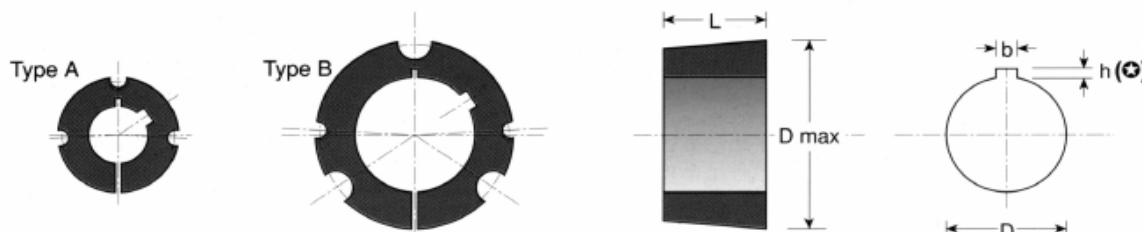
Clamping surfaces: Rtmax. 16µm

Materiál: ST = ocel C43 / ST = steel C43



## Upínací pouzdra BK25 a BK26 / Clamping Elements BK25 and BK26

Označení / Obj.č. Part.No.	Rozměry / Dimensions					Moment/ Torque Mt [Nm]	Ax.síla Ax.Force F [kN]	Tlak/Pressure			Utahovací.matice/Locking Nut		
	d [mm]	D [mm]	D2 [mm]	L [mm]	L1 [mm]			Hř./Shaft [N/mm2]	Náb./Hub [N/mm2]		Typ/ Type	Závit/ Thread	Mom./ Nm
BK25-14x25	14	25	32	16,5	6,5	37	5	130	73		KM4	M20x1	65
BK25-15x25	15	25	32	16,5	6,5	40	5	122	73		KM4	M20x1	65
BK25-16x25	16	25	32	16,5	6,5	42	5	114	73		KM4	M20x1	65
BK25-18x30	18	30	38	17	7	65	7	133	80		KM5	M25x1,5	85
BK25-19x30	19	30	38	17	7	60	6	111	70		KM5	M25x1,5	95
BK25-20x30	20	30	38	17	7	70	7	120	80		KM5	M25x1,5	110
BK25-24x35	24	35	45	17	7	100	8	117	80		KM6	M30x1,5	155
BK25-25x35	25	35	45	17	7	110	9	126	90		KM6	M30x1,5	160
BK25-28x40	28	40	52	20	8	140	10	100	70		KM7	M35x1,5	200
BK25-30x40	30	40	52	20	8	170	11	107	80		KM7	M35x1,5	240
BK25-32x45	32	45	58	22	9	210	13	113	80		KM8	M40x1,5	320
BK25-35x45	35	45	58	22	9	230	13	103	80		KM8	M40x1,5	320
BK25-40x52	40	52	65	23	9	330	17	113	90		KM9	M45x1,5	440
BK25-45x57	45	57	70	25,5	10	440	20	110	90		KM10	M50x1,5	550
BK25-50x62	50	62	75	25,5	10	530	21	108	90		KM11	M55x2	660
BK25-60x73	60	73	85	29,5	12	830	28	93	80		KM13	M65x2	900
BK26-14x25	14	25	32	29	17	90	13	143	80		KM4	M20x1	90
BK26-15x25	15	25	32	29	17	100	13	133	80		KM4	M20x1	90
BK26-16x25	16	25	32	29	17	80	10	94	60		KM4	M20x1	70
BK26-18x30	18	30	38	31	18	200	22	183	110		KM5	M25x1,5	190
BK26-19x30	19	30	38	31	18	170	18	142	90		KM5	M25x1,5	150
BK26-20x30	20	30	38	31	18	130	13	90	60		KM5	M25x1,5	110
BK26-24x35	24	35	45	35	22	270	23	117	80		KM6	M30x1,5	230
BK26-25x35	25	35	45	35	22	200	16	84	60		KM6	M30x1,5	170
BK26-28x40	28	40	52	35	22	460	33	157	110		KM7	M35x1,5	390
BK26-30x40	30	40	52	35	22	300	20	93	70		KM7	M35x1,5	240
BK26-32x45	32	45	58	42	28	420	26	98	70		KM8	M40x1,5	320
BK26-35x45	35	45	58	42	28	460	26	77	60		KM8	M40x1,5	320
BK26-40x50	40	50	65	44	28	640	32	88	70		KM9	M45x1,5	440
BK26-45x55	45	55	70	45	28	760	34	73	60		KM10	M50x1,5	550
BK26-50x60	50	60	75	46	28	930	37	72	60		KM11	M55x2	660
BK26-60x70	60	70	85	52	28	1500	50	82	70		KM13	M65x2	1050



Příklad objednávky: Obj.číslo/ Part.No. = TB 1610 - 25

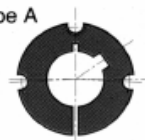
**Upínací pouzdra Taper / Taper Bushes**

Typ-Obj.č. Part.No. Typ/Type	Rozměry / Dimensions			Up.srouby/Clamp.Screws			Moment/Torque			Svěrná síla Clamp.force	Hmotnost Weight
	D od-do [mm]	D max [mm]	L [mm]	Typ/ Type	Klíč Wrench	Moment/ Torq.Nm	D= [mm]	bez pera [Nm]	s perem [Nm]	[N]	
1008 A	10-25	35,0	22,3	1/4x1/2	3	5,7 (4,7)*	12	22		3990	0,12
							19	37	136	4940	
							24	58		5490	
1108 A	10-28	38,0	22,3	1/4x1/2	3	5,7 (4,7)*	19	40		4630	0,16
							24	62	147	5220	
							28	71		5720	
1210 1215 A	11-32	47,5	25,4	3/8x5/8	5	20 (15)*	19	105	407	9800	0,28
							24	140	407	10900	
							32	180		12300	
1310 A	12-35	50,5	25,4	3/8x5/8	5	20 (15)*	14	59		8840	0,39
							25	120	4 35	10900	
							35	210		12300	
1610 1615 A	14-42	57,0	25,4	3/8x5/8	5	20 (15)*	19	98		8500	0,32
							24	135	486	9570	
							38	240	486	11900	
2012 2017 A	14-50	70,0	31,8	7/16x7/8	6	31 (25)*	24	165	808	11500	0,75
							38	310	808	14400	
							50	420		16700	
2517 2525 A	16-60	85,5	44,5	1/2x1	6	49 (35)*	38	380	1311	17000	1,10
							48	510	1311	19200	
							60	690		22300	
3020 3030 A	25-75	108,0	50,8	5/8x1 1/4	8	92 (70)*	38	480		23900	2,61
							48	600	2712	26100	
							60	900	2712	31500	
3525 3535 B	35-90	127,0	63,5	1/2x1 1/2	10	115	75	1300		34500	3,80
							42	700	5062	41000	
							60	1450	5062	49800	
4030 4040 B	40-100	146,0	76,2	5/8x1 3/4	1 1/2"	170	90	2300		59000	5,25
							48	1250	8735	68000	
							75	2200	8735	77200	
4535 4545 B	55-110	162,0	88,9	3/4x2	9/16"	190	100	3460		89400	7,10
							48	1250	8735	68000	
							75	2200	8735	77200	
5040 5050 B	70-125	177,5	101,6	7/8x2 1/4	9/16"	270	55	1840	124 30	79600	11,80
							75	3000	124 30	93000	
							100	4500		107700	
5040 5050 B	70-125	177,5	127,0	7/8x2 1/4	9/16"	270	75	3250	14238	91800	14,20
							100	4800	14238	106600	
							125	5900		119500	

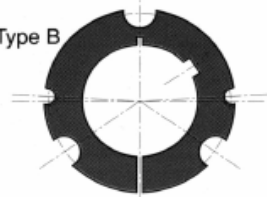
\* Snížené hodnoty utahovacích momentů při montáži na hřídel s perem / Installation with key

TB 6050, TB 7060 a jiné rozměry nabízíme na základě poptávky / TB 6050, TB 7060 and other dimensions can be manufactured on request.

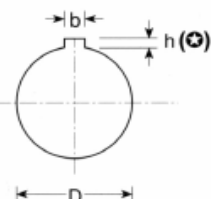
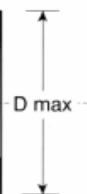
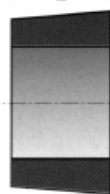
Type A



Type B



L



### Rozměry upínacích pouzder Taper / Taper Bushes Dimensions

Typ	mm/inch	Standardní průměry děr / Standard Bore Diameter D
1008	[mm] " [inch]	9, 10, 11, 12, 14, 15, 16, 18, 19, 20, 22, 24, 25* 3/8, 7/16, 1/2, 9/16, 5/8, 11/16, 3/4, 13/16, 7/8, 15/16*, 1*
1108	[mm] " [inch]	9, 10, 11, 12, 14, 15, 16, 18, 19, 20, 22, 24, 25, 28* 3/8, 7/16, 1/2, 9/16, 5/8, 11/16, 3/4, 13/16, 7/8, 15/16, 1, 1 1/16*, 1 1/8*
1210	[mm] " [inch]	11, 12, 14, 15, 16, 18, 19, 20, 22, 24, 25, 28, 30, 32 1/2, 9/16, 5/8, 11/16, 3/4, 13/16, 7/8, 15/16, 1, 1 1/16, 1 1/8, 1 3/16, 1 1/4
1215	[mm] " [inch]	11, 12, 14, 15, 16, 18, 19, 20, 22, 24, 25, 28, 30, 32 1/2, 9/16, 5/8, 11/16, 3/4, 13/16, 7/8, 15/16, 1, 1 1/16, 1 1/8, 1 3/16, 1 1/4
1310	[mm] " [inch]	12, 14, 15, 16, 18, 19, 20, 22, 24, 25, 28, 30, 32, 35* 1/2, 9/16, 5/8, 11/16, 3/4, 13/16, 7/8, 15/16, 1, 1 1/16, 1 1/8, 1 3/16, 1 1/4, 1 5/16, 1 3/8
1610	[mm] " [inch]	12, 14, 15, 16, 18, 19, 20, 22, 24, 25, 28, 30, 32, 35, 38, 40, 42 1/2, 9/16, 5/8, 11/16, 3/4, 13/16, 7/8, 15/16, 1, 1 1/16, 1 1/8, 1 3/16, 1 1/4, 1 5/16, 1 3/8, 1 7/16, 1 1/2, 1 5/8
1615	[mm] " [inch]	12, 14, 15, 16, 18, 19, 20, 22, 24, 25, 28, 30, 32, 35, 38, 40, 42* 1/2, 9/16, 5/8, 11/16, 3/4, 13/16, 7/8, 15/16, 1, 1 1/16, 1 1/8, 1 3/16, 1 1/4, 1 5/16, 1 3/8, 1 7/16, 1 1/2, 1 5/8*
2012	[mm] " [inch]	14, 15, 16, 18, 19, 20, 22, 24, 25, 28, 30, 32, 35, 38, 40, 42, 45, 48, 50 3/4, 13/16, 7/8, 15/16, 1, 1 1/16, 1 1/8, 1 3/16, 1 1/4, 1 5/16, 1 3/8, 1 7/16, 1 1/2, 1 5/8, 1 3/4, 1 7/8, 2
2517	[mm] " [inch]	19, 20, 22, 24, 25, 28, 30, 32, 35, 38, 40, 42, 45, 48, 50, 55, 60, 65 3/4, 13/16, 7/8, 15/16, 1, 1 1/16, 1 1/8, 1 3/16, 1 1/4, 1 5/16, 1 3/8, 1 7/16, 1 1/2, 1 5/8, 1 3/4, 1 7/8, 2
3020	[mm] " [inch]	25, 28, 30, 32, 35, 38, 40, 42, 45, 48, 50, 55, 60, 65, 70, 75 1 1/4, 1 5/16, 1 3/8, 1 7/16, 1 1/2, 1 5/8, 1 3/4, 1 7/8, 2, 2 1/8, 2 1/4, 2 3/8, 2 1/2, 2 5/8, 2 3/4, 2 7/8, 3
3030	[mm] " [inch]	25, 28, 30, 32, 35, 38, 40, 42, 45, 48, 50, 55, 60, 65, 70, 75 1 1/4, 1 5/16, 1 3/8, 1 7/16, 1 1/2, 1 5/8, 1 3/4, 1 7/8, 2, 2 1/8, 2 1/4, 2 3/8, 2 1/2, 2 5/8, 2 3/4, 2 7/8, 3
3525	[mm] " [inch]	28, 30, 32, 35, 38, 40, 42, 45, 48, 50, 55, 60, 65, 70, 75, 80, 85, 90 1 1/2, 1 5/8, 1 3/4, 1 7/8, 2, 2 1/8, 2 1/4, 2 3/8, 2 1/2, 2 5/8, 2 3/4, 2 7/8, 3, 3 1/8, 3 1/4, 3 3/8, 3 1/2*
3535	[mm] " [inch]	28, 30, 32, 35, 38, 40, 42, 45, 48, 50, 55, 60, 65, 70, 75, 80, 85, 90 1 1/2, 1 5/8, 1 3/4, 1 7/8, 2, 2 1/8, 2 1/4, 2 3/8, 2 1/2, 2 5/8, 2 3/4, 2 7/8, 3, 3 1/8, 3 1/4, 3 3/8, 3 1/2*
4030	[mm] " [inch]	40, 42, 45, 48, 50, 55, 60, 65, 70, 75, 80, 85, 90, 95, 100 1 3/4, 1 7/8, 2, 2 1/8, 2 1/4, 2 3/8, 2 1/2, 2 5/8, 2 3/4, 2 7/8, 3, 3 1/8, 3 1/4, 3 3/8, 3 1/2, 3 3/4*, 4*
4040	[mm] " [inch]	40, 42, 45, 48, 50, 55, 60, 65, 70, 75, 80, 85, 90, 95, 100 1 3/4, 1 7/8, 2, 2 1/8, 2 1/4, 2 3/8, 2 1/2, 2 5/8, 2 3/4, 2 7/8, 3, 3 1/8, 3 1/4, 3 3/8, 3 1/2, 3 3/4*, 4*
4535	[mm] " [inch]	55, 60, 65, 70, 75, 80, 85, 90, 95, 100, 105, 110 2 1/4, 2 3/8, 2 1/2, 2 5/8, 2 3/4, 2 7/8, 3, 3 1/8, 3 1/4, 3 3/8, 3 1/2, 3 3/4, 4, 4 1/4*, 4 1/2*
4545	[mm] " [inch]	55, 60, 65, 70, 75, 80, 85, 90, 95, 100, 105, 110 2 1/4, 2 3/8, 2 1/2, 2 5/8, 2 3/4, 2 7/8, 3, 3 1/8, 3 1/4, 3 3/8, 3 1/2, 3 3/4, 4, 4 1/4*, 4 1/2*
5040	[mm] " [inch]	70, 75, 80, 85, 90, 95, 100, 105, 110, 115, 120, 125 2 3/4, 2 7/8, 3, 3 1/8, 3 1/4, 3 3/8, 3 1/2, 3 3/4, 4, 4 1/4, 4 1/2, 4 3/4, 5*
5050	[mm] " [inch]	70, 75, 80, 85, 90, 95, 100, 105, 110, 115, 120, 125 2 3/4, 2 7/8, 3, 3 1/8, 3 1/4, 3 3/8, 3 1/2, 3 3/4, 4, 4 1/4, 4 1/2, 4 3/4, 5*

### Rozměry per dle UNI 6604-69 / DIN 6885 / Keyway UNI 6604-69 / DIN 6885

D [mm]	b [mm]	h [mm]	D [inch]	b [inch]	h [inch]
10÷12	4	1,8	3/8÷1/2	1/8	1/16
13÷17	5	2,3	9/16÷3/4	3/16	3/32
18÷22	6	2,8	13/16÷1	1/4	1/8
23÷30	8	3,3	1/16÷1-1/4	5/16	1/8
31÷38	10	3,3	1-5/16÷1-1/2	3/8	1/8
39÷44	12	3,3	1-5/8÷1-3/4	7/16	5/32
45÷50	14	3,8	1-7/8÷2	1/2	5/32
51÷58	16	4,3	2-1/8÷2-1/2	5/8	7/32
59÷65	18	4,4	2-5/8÷3	3/4	1/4
66÷75	20	4,9	3-1/8÷3-1/2	7/8	5/16
76÷85	22	5,4	3-3/4÷4	1	3/8
86÷95	25	5,4	4-1/4÷5	1 1/4	7/16
196÷110	28	6,4			
111÷130	32	7,4			

**Material:**

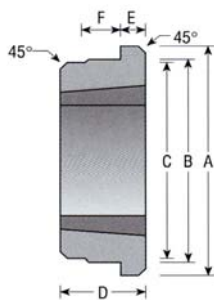
GG20 = Seda litina / GG20 = iron cast

\* ST = ocel / \* ST = steel

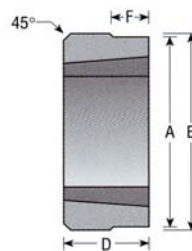
TB 1008 - 24,25 ... h=1,3mm

TB 1108 - 28 ... h=1,3mm

TB 1615 - 42 ... h=1,3mm



Figur 1



Figur 2

### Navařovací náboje pro pouzdra TAPER / Weld-on-hubs for Taper Bushes

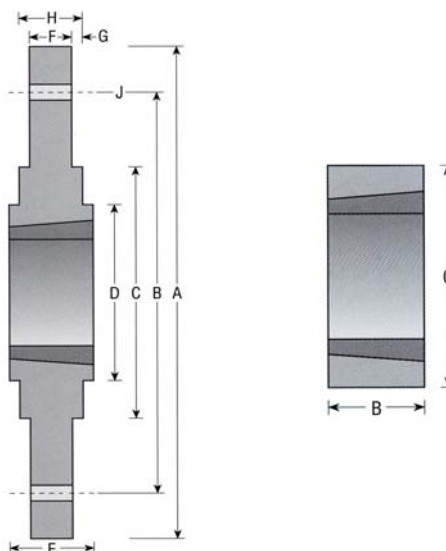
Označení / Obj.č. Part.No.	Pouzdro Bush	Typ Fig.	A [mm]	B h8 [mm]	C [mm]	D [mm]	E [mm]	F [mm]
WH1200	1210	1	70	65	64,5	25	9	10
WH1600	1610	1	80	75	74,5	25	9	10
WH2000	2012	1	95	90	89,5	32	12	12
WH2500	2517	1	115	110	109,5	44	19	15
WH3000	3020	1	145	140	139,5	50	19	15
WH3500	3525	1	190	180	179,5	65	25	25
WH3535	3535	1	190	180	179,5	89	32	25
WH4000	4040	1	200	190	189,5	101	32	30
WH4500	4545	1	210	200	199,5	115	40	30
WH5000	5050	1	230	220	219,5	127	40	35
WM1200	1210	1	70	60	58	25	9	10
WM1215	1215	1	73	60	58	38	16	11
WM1600	1615	1	83	70	68	38	16	11
WM2000	2012	1	95	90	88	32	12	12
WM2500	2517	1	127	110	108	44	19	13
WM3000	3030	1	152	130	125	76	25	19
WM3020	3020	1	152	130	125	50	25	15
WM3500	3535	1	184	155	151	89	32	25
WM4000	4040	1	225	195	187	102	32	32
WM4500	4545	1	254	220	213	115	38	38
WM5000	5050	1	276	242	228	127	38	38
TBK1210Q	1210	2	65,5	66		25		17
TBK1610Q	1610	2	85,5	86		25		17
TBK1615Q	1615	2	85,5	86		38		25
TBK2012Q	2012	2	95,5	96		32		21
TBK2517Q	2517	2	110,5	111		44		30
TBK2525Q	2525	2	110,5	111		64		45
TBK3020Q	3020	2	135,5	136		51		34
TBK3030Q	3030	2	135,5	136		76		51
TBK3535Q	3535	2	165,5	166		89		60
TBK4040Q	4040	2	205,5	206		102		70
TBK4545Q	4545	2	235,5	236		115		85
TBK5050Q	5050	2	249,5	250		127		85

Navařovací náboje jsou vyrobeny z oceli. Navařují se na ně plochá řetězová kola, kola čerpadel nebo ventilátorů a pomocí pouzdra Taper se upevňují na hřídel.

Weld-on-Hubs for Taper Bushes in WM or WH construction are made of steel. The flange provides a convenient means of welding hubs into Plate Sprocket, Pump Wheels, Fanrotors, V-belt Pulleys of steel and many other components which must be fastened to a shaft.

Našroubovací náboje typu SM pro pouzdra Taper jsou vyrobeny z šedé litiny GG25. Konstruktivní provedení umožňuje např. u oběžného nebo ventilátorového kola montáž z levé i pravé strany. Používáním typizovaných šroubováků lze dosáhnout snížení výrobních a skladových nákladů.

Bolt-on-Hubs are designed for use of Taper Bushes and are made of high-grade cast-iron. The design allows the same hub to be used from both sides. Thus stock costs may be reduced. They provide a convenient means of securing fan rotors, impellers, and other components which must be firmly fastened to a shaft.



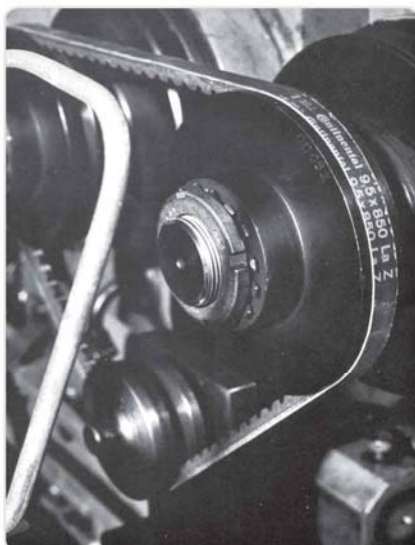
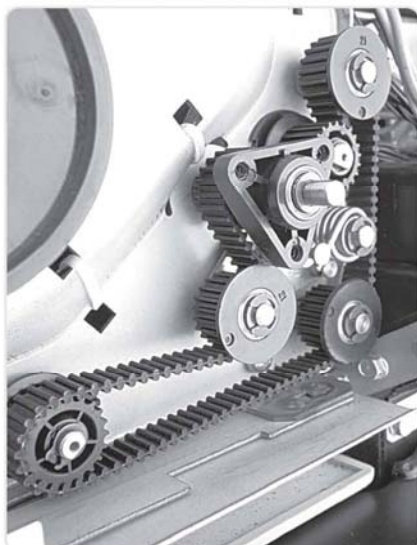
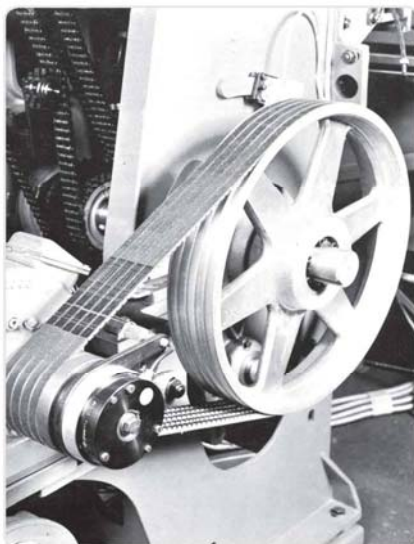
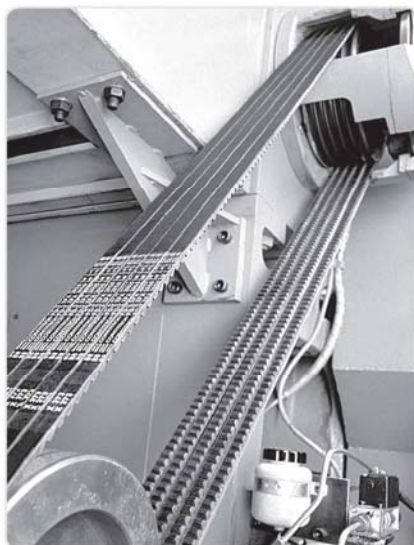
### Našroubovací náboje pro pouzdra TAPER / Bolt-on-hubs for Taper Bushes

Označení / Obj.č.	Pouzdro	A	B	C -0,1	D	E	F	G	H	J
Part.No.	Bush	Fig.	[mm]	[mm]	[mm]	[mm]	[mm]	[mm]	[mm]	[mm]
SM1200	1210	180	135	90	75	25	6,5	2,5	11,5	6XØ7,5
SM1600	1615	200	150	110	85	38	7,5	2,5	12,5	6XØ7,5
SM2000	2012	270	190	140	110	32	8,5	2,5	13,5	6XØ9,5
SM2500	2517	340	240	170	125	45	9,5	2,5	14,5	8XØ11,5
SM30-1	3020	430	300	220	160	51	13,5	2,5	18,5	8XØ13,5
SM30-2	3020	485	340	250	160	51	13,5	2,5	18,5	8XØ13,5
SM1210	1210	120	100	80	75	25	6,5	2,5	11,5	6XØ7,5
SM1610	1610	130	110	90	85	25	7,5	2,5	12,5	6XØ7,5
SM2012*	2012	145	125	115	110	32	8,5	2,5	13,5	6XØ9,5
SM2517	2517	185	155	130	125	45	9,5	2,5	14,5	8XØ11,5
SM3020	3020	220	190	160	160	51	13,5	2,5	18,5	8XØ13,5

### Mezikroužky / Adaptors

Označení / Obj.č.	Pouzdro	Typ	C +0,075	B	Pero/KW H9	HL./Depth
Part.No.	Bush	Type	[mm]	[mm]	[mm]	[mm]
1008AM	1008	u/not	45	22		
1008BM	1008	m/not	45	22	5	2,5
1210AM	1210	u/not	60	25		
1210BM	1210	m/not	60	25	6	3
1215AM	1215	u/not	60	38		
1215BM	1215	m/not	60	38	6	3
1610AM	1610	u/not	70	25		
1610BM	1610	m/not	70	25	10	4
1615AM	1615	u/not	70	38		
1615BM	1615	m/not	70	38	10	4
2017AM	2017	u/not	90	45		
2017BM	2017	m/not	90	45	12	4
2517AM	2517	u/not	105	45		
2517BM	2517	m/not	105	45	16	4
2525AM	2525	u/not	105	64		
2525BM	2525	m/not	105	64	16	4
3020AM	3020	u/not	130	51		
3020BM	3020	m/not	130	51	20	5
3030AM	3030	u/not	130	76		
3030BM	3030	m/not	130	76	20	5
3535AM	3535	u/not	160	89		
3535BM	3535	m/not	160	89	22	5
4040AM	4040	u/not	185	102		
4040BM	4040	m/not	185	102	24	5





<b>A</b>	Nový návrh / New Design
<b>B</b>	Změna stávajícího převodu / Modification
<b>C</b>	Kontrolní výpočet / Check Calculation

<b>1</b>	Klínový řemen / V-belt
<b>2</b>	Ozubený řemen / Timing belt
<b>3</b>	Drážkový řemen / Poly-V belt
<b>4</b>	Plochý řemen / Flat belt
<b>5</b>	Řetěz / Chain
<b>6</b>	Hřídelová spojka / Coupling

	Motor / Motor	Stroj / Machine
1. <b>Typ motoru / druh stroje</b> Motor/Machine type	.....	.....
<b>Jmenovitý výkon</b> Nominal output	..... kW	..... kW
<b>Krouticí moment</b> Torque	..... Nm	..... Nm
<b>Otáčky</b> Revolutions	..... 1/min.	..... 1/min.
<b>Průměr hnací/hnané řemenice</b> Driving/Driven pulley diameter	..... mm	..... mm
<b>Průměr hřídele motoru/stroje</b> Motor/Machine shaft diameter	..... mm	..... mm
<b>Provozní doba</b> Operation hours	..... hod./hours	
<b>Způsob zatížení</b> Loading mode	.....	
2. <b>Převodový poměr</b> Transmission Ratio	..... -	
3. <b>Osová vzdálenost min/max.</b> Centre distance	min. .... mm	max. .... mm
4. <b>Okolní vlivy</b> Surrounding Environment	.....	
a) chemikálie / chemicals	.....	b) prach / dust
c) olej, voda .../ oil, water ...	.....	d) jiné / other
<b>Provozní teplota</b> Operating Temperature	..... °C	
5. <b>Napínací kladka</b> Stretching Pulley	ano/yes )	ne/no )
<b>event. doplňte obrázkem s rozměry</b> Supply dimension drawing please	a) vnitřní/inner	b) vnější/outer
6. <b>Požadavky / Requirements</b>		
<b>Požadovaná životnost</b> Required life span	..... hod.	
<b>Požadovaná hlučnost</b> Required noise level	..... dB	
<b>Min./max. šířka řemenice</b> Pulley min./max. width	min. .... mm	max. .... mm
7. <b>Povrch. vrstva - transport</b> Surface Finish - Transport	.....	
8. <b>Pozn./Note</b>	.....	

Požaduje / Required by:

Firma / Company .....  
 Jméno / Name .....  
 Adresa / Address .....  
 Tel.: .....  
 Fax.: .....  
 E-mail: .....

TYMA CZ, s.r.o.

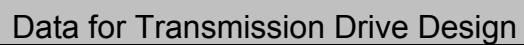
Na Pískách 731/12

400 04 Trmice

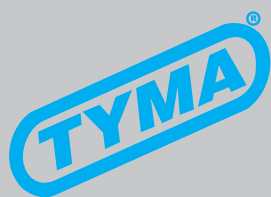
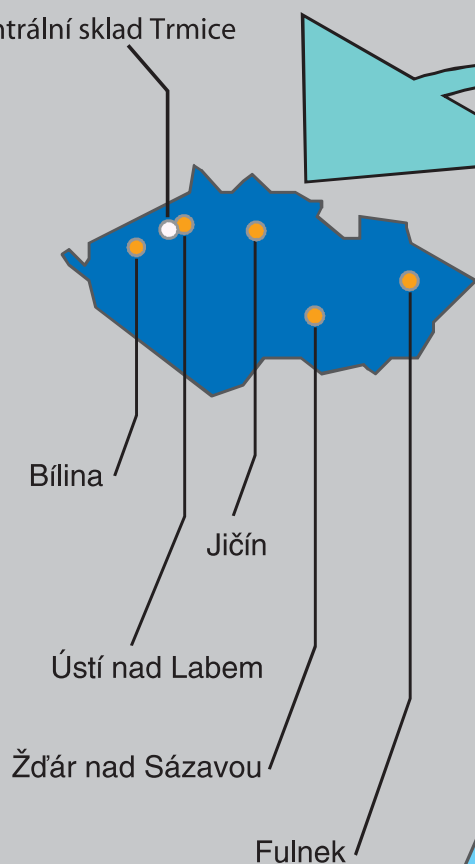


V případě potřeby doplňte nákresem převodu.

If necessary, a drawing can be required.

[illegible]

Centrální sklad Trmice



Sídlo firmy a centrální sklad /  
Headquarters

**TYMA CZ, s.r.o.**

Na Pískách 731/12

CZ - 400 04 Trmice

Tel.: +420 475 655 010

Fax: +420 475 655 018

E-mail: [info@tyma.cz](mailto:info@tyma.cz)

[http: www.tyma.cz](http://www.tyma.cz)

e-shop: [belt-online.com](http://belt-online.com)

Regionální obchodně-technické kanceláře /  
Engineering office - sales representative

- Bohumil Kaplan - Region Praha, Střední Čechy  
Kancelář Ústí n. L. - Tel.: +420 603 825 701
- Miroslav Adamec - Region Západní a Jižní Čechy  
Kancelář Bílina - Tel.: +420 603 838 757
- Jan Kaplan - Region Severní Čechy  
Kancelář Ústí n. L. - Tel.: +420 604 383 318
- Ing. Michal Mareš - Region Východní Čechy  
Kancelář Jičín - Tel.: +420 777 665 850
- Ing. Daniel Lalák - Region Jižní Morava  
Kancelář Žďár nad Sázavou - Tel.: +420 721 717 293
- Aleš Ohnheiser - Region Severní Morava  
Kancelář Fulnek - Tel.: +420 739 633 650