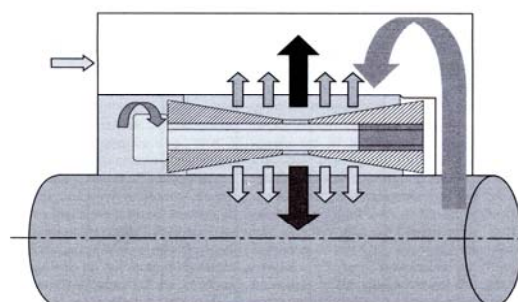
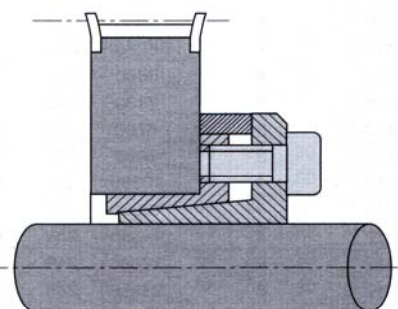
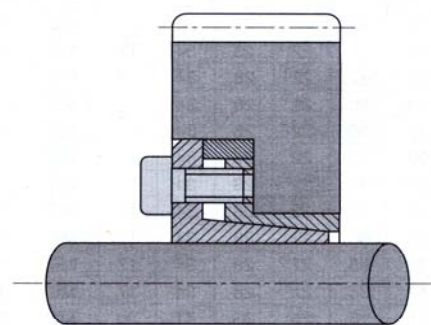
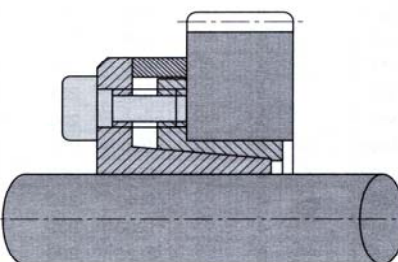
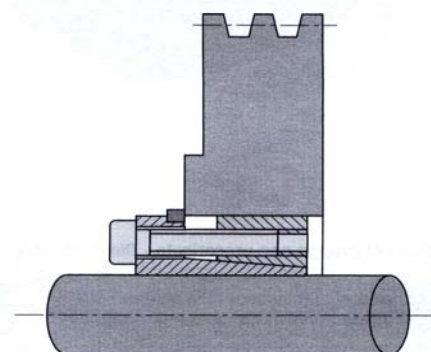
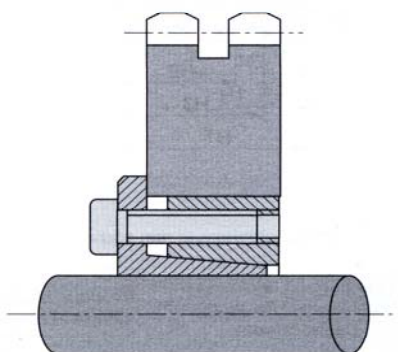
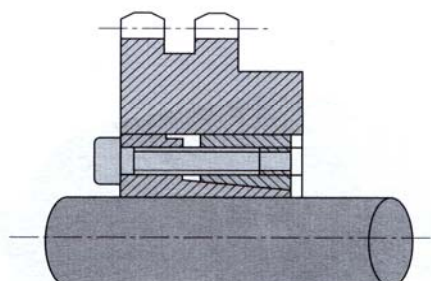
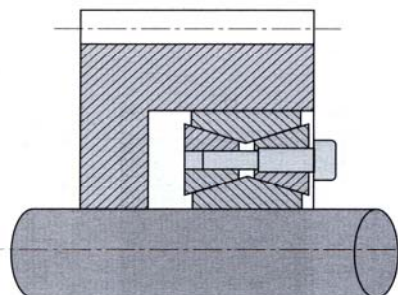




KATALOG UPÍNACÍCH POUZDER



Upínací pouzdra - příklady použití / Clamping Elements - Application



Změna provedení, rozměrů a materiálu vyhražena. / All dimensions and materials may be subject to change.

RCK 15 - Samostředící/Self-centring
Pro střední zatížení/For Standard Hubs

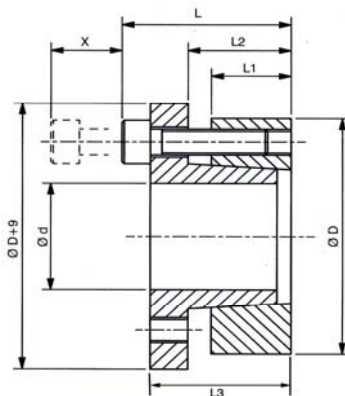
Doporučená tolerance: Hřídel-h8, Náboj-H8

Recommended tolerances: Shaft-h8, Hub-H8

Drsnost povrchu: Rt max. 16µm

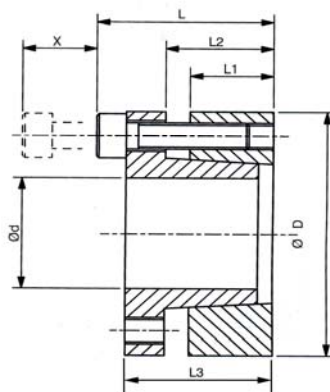
Clamping surfaces: Rtmax. 16µm

Materiál: ST = ocel C43 / ST = steel C43



Upínací pouzdra RCK15 - samostředící / Clamping Elements RCK15 - Self-centring

Označení / Obj.č. Part.No.	Rozměry / Dimensions						Moment/ Torque Mt [Nm]	Tlak/Pressure		Up.šrouby/Clamp.Screws			Uvolň./Extr.		Hmot/ Weight [kg]
	d [mm]	D [mm]	L1 [mm]	L2 [mm]	L3 [mm]	L [mm]		Hř./Shaft [N/mm2]	Náb./Hub [N/mm2]	Počet/ No.	Typ/ Type	Moment/ Torq.Nm	Typ/ Type	Počet/ No.	
RCK15-14x55	14	55	17	22	31	39	290	458	118	4	M8x25	41	M8	2	0.51
RCK15-16x55	16	55	17	22	31	39	320	400	118	4	M8x25	41	M8	2	0.49
RCK15-18x55	18	55	17	22	31	39	360	356	118	4	M8x25	41	M8	2	0.48
RCK15-19x55	19	55	17	22	31	39	380	337	118	4	M8x25	41	M8	2	0.47
RCK15-20x55	20	55	17	22	31	39	400	320	118	4	M8x25	41	M8	2	0.47
RCK15-22x55	22	55	17	22	31	39	440	290	118	4	M8x25	41	M8	2	0.45
RCK15-24x55	24	55	17	22	31	39	480	265	118	4	M8x25	41	M8	2	0.44
RCK15-25x55	25	55	17	22	31	39	500	255	118	4	M8x25	41	M8	2	0.43
RCK15-28x55	28	55	17	22	31	39	560	228	118	4	M8x25	41	M8	2	0.41
RCK15-30x55	30	55	17	22	31	39	600	213	118	4	M8x25	41	M8	2	0.40
RCK15-24x65	24	65	17	22	31	39	620	332	122	5	M8x25	41	M8	3	0.68
RCK15-25x65	25	65	17	22	31	39	640	320	122	5	M8x25	41	M8	3	0.63
RCK15-28x65	28	65	17	22	31	39	720	285	122	5	M8x25	41	M8	3	0.61
RCK15-30x65	30	65	17	22	31	39	770	267	122	5	M8x25	41	M8	3	0.58
RCK15-32x65	32	65	17	22	31	39	820	250	122	5	M8x25	41	M8	3	0.56
RCK15-35x65	35	65	17	22	31	39	900	228	122	5	M8x25	41	M8	3	0.53
RCK15-38x65	38	65	17	22	31	39	980	210	122	5	M8x25	41	M8	3	0.50
RCK15-40x65	40	65	17	22	31	39	1030	200	122	5	M8x25	41	M8	3	0.47
RCK15-30x80	30	80	20	25	33	41	1080	315	120	7	M8x25	41	M8	3	1.04
RCK15-32x80	32	80	20	25	33	41	1150	298	120	7	M8x25	41	M8	3	1.03
RCK15-35x80	35	80	20	25	33	41	1260	272	120	7	M8x25	41	M8	3	0.98
RCK15-38x80	38	80	20	25	33	41	1370	250	120	7	M8x25	41	M8	3	0.94
RCK15-40x80	40	80	20	25	33	41	1440	238	120	7	M8x25	41	M8	3	0.91
RCK15-42x80	42	80	20	25	33	41	1510	226	120	7	M8x25	41	M8	3	0.89
RCK15-45x80	45	80	20	25	33	41	1620	212	120	7	M8x25	41	M8	3	0.83
RCK15-48x80	48	80	20	25	33	41	1730	198	120	7	M8x25	41	M8	3	0.79
RCK15-50x80	50	80	20	25	33	41	1800	190	120	7	M8x25	41	M8	3	0.74
RCK15-40x80	40	80	20	25	33	41	2150	340	169	10	M8x25	41	M8	4	0.89
RCK15-45x80	45	80	20	25	33	41	2420	302	169	10	M8x25	41	M8	4	0.85
RCK15-50x80	50	80	20	25	33	41	2700	272	169	10	M8x25	41	M8	4	0.78

RCK 13 - Samostředící/Self-centring
Pro střední zatížení/Standard General Purpose
Možný axiál.posuv náboje
Doporučená tolerance: Hřídel-h8, Náboj-H8
Recommended tolerances: Shaft-h8, Hub-H8
Drsnost povrchu: Rt max. 16µm
Clamping surfaces: Rtmax. 16µm
Materiál: ST = ocel C43 / ST = steel C43

Upínací pouzdra RCK13 - samostředící / Clamping Elements RCK13 - Self-centring

Označení / Obj.č. Part.No.	Rozměry / Dimensions						Moment/ Torque Mt [Nm]	Tlak/Pressure		Up.šrouby/Clamp.Screws			Uvolň./Extr.		Hmot/ Weight [kg]
	d [mm]	D [mm]	L1 [mm]	L2 [mm]	L3 [mm]	L [mm]		Hř./Shaft [N/mm2]	Náb./Hub [N/mm2]	Počet/ No.	Typ/ Type	Moment/ Torq.Nm	Typ/ Type	Počet/ No.	
RCK13-18x47	18	47	17	22	28	34	310	314	120	5	M6x20	14	M6	3	0.27
RCK13-19x47	19	47	17	22	28	34	330	300	120	5	M6x20	14	M6	3	0.27
RCK13-20x47	20	47	17	22	28	34	380	295	125	5	M6x20	14	M6	3	0.26
RCK13-22x47	22	47	17	22	28	34	410	270	125	5	M6x20	14	M6	3	0.25
RCK13-24x50	24	50	17	22	28	34	440	243	120	6	M6x20	14	M6	3	0.28
RCK13-25x50	25	50	17	22	28	34	560	285	140	6	M6x20	14	M6	3	0.27
RCK13-28x55	28	55	17	22	28	34	630	255	130	6	M6x20	14	M6	3	0.32
RCK13-30x55	30	55	17	22	28	34	660	235	130	6	M6x20	14	M6	3	0.30
RCK13-32x60	32	60	17	22	28	34	960	295	155	8	M6x20	14	M6	4	0.37
RCK13-35x60	35	60	17	22	28	34	1050	270	155	8	M6x20	14	M6	4	0.34
RCK13-38x65	38	65	17	22	28	34	1140	250	145	8	M6x20	14	M6	4	0.41
RCK13-40x65	40	65	17	22	28	34	1200	235	145	8	M6x20	14	M6	4	0.38
RCK13-45x75	45	75	20	25	33	41	2180	290	170	7	M8x25	35	M8	3	0.63
RCK13-50x80	50	80	20	25	33	41	2430	260	160	7	M8x25	35	M8	3	0.68
RCK13-55x85	55	85	20	25	33	41	3070	270	175	8	M8x25	35	M8	4	0.73
RCK13-60x90	60	90	20	25	33	41	3350	245	165	8	M8x25	35	M8	4	0.78
RCK13-65x95	65	95	20	25	33	41	4080	255	175	9	M8x25	35	M8	3	0.83
RCK13-70x110	70	110	24	30	40	50	6280	280	180	8	M10x30	70	M10	4	1,33
RCK13-75x115	75	115	24	30	40	50	6680	260	170	8	M10x30	70	M10	4	1,39
RCK13-80x120	80	120	24	30	40	50	7130	250	160	8	M10x30	70	M10	4	1,48
RCK13-85x125	85	125	24	30	40	50	8480	260	180	9	M10x30	70	M10	3	1,55
RCK13-90x130	90	130	24	30	40	50	9080	250	170	9	M10x30	70	M10	3	1,63
RCK13-95x135	95	135	24	30	40	50	10580	260	180	10	M10x30	70	M10	4	1,70
RCK13-100x145	100	145	26	32	44	56	13380	270	190	8	M12x35	125	M12	4	2,60
RCK13-110x155	110	155	26	32	44	56	14580	240	180	8	M12x35	125	M12	4	2,80
RCK13-120x165	120	165	26	32	44	56	17880	250	180	9	M12x35	125	M12	4	3,00
RCK13-130x180	130	180	34	40	52	64	29980	240	170	12	M12x35	125	M12	6	4,60
RCK13-140x190	140	190	34	40	54	68	26980	210	150	9	M14x40	190	M14	4	4,90
RCK13-150x200	150	200	34	40	54	68	32980	230	170	10	M14x40	190	M14	5	5,20
RCK13-160x210	160	210	34	40	54	68	37980	230	170	11	M14x40	190	M14	4	5,50
RCK13-170x225	170	225	44	50	64	78	44980	180	130	12	M14x40	190	M14	6	7,70
RCK13-180x235	180	235	44	50	64	78	46980	170	130	12	M14x40	190	M14	6	8,10

RCK 16 - Samostředící/Self-centring
Pro střední zatížení/Standard General Purpose

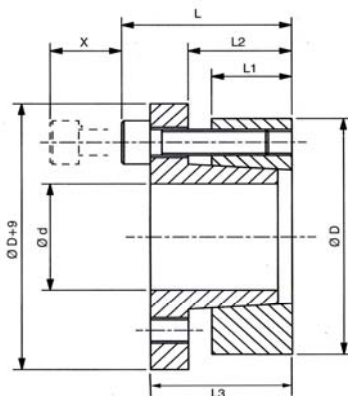
Doporučená tolerance: Hřídel-h8, Náboj-H8

Recommended tolerances: Shaft-h8, Hub-H8

Drsnost povrchu: Rt max. 16µm

Clamping surfaces: Rtmax. 16µm

Materiál: ST = ocel C43 / ST = steel C43



Upínací pouzdra RCK16 - samostředící / Clamping Elements RCK16 - Self-centring

Označení / Obj.č. Part.No.	Rozměry / Dimensions						Moment/ Torque Mt [Nm]	Tlak/Pressure		Up.šrouby/Clamp.Screws			Uvolň./Extr.		Hmot/ Weight [kg]
	d [mm]	D [mm]	L1 [mm]	L2 [mm]	L3 [mm]	L [mm]		Hř./Shaft [N/mm2]	Náb./Hub [N/mm2]	Počet/ No.	Typ/ Type	Moment/ Torq.Nm	Typ/ Type	Počet/ No.	
RCK16-18x47	18	47	17	22	28	34	310	314	120	5	M6x20	14	M6	3	0.28
RCK16-19x47	19	47	17	22	28	34	330	300	120	5	M6x20	14	M6	3	0.27
RCK16-20x47	20	47	17	22	28	34	380	295	125	5	M6x20	14	M6	3	0.26
RCK16-22x47	22	47	17	22	28	34	410	270	125	5	M6x20	14	M6	3	0.25
RCK16-24x50	24	50	17	22	28	34	440	243	120	6	M6x20	14	M6	3	0.28
RCK16-25x50	25	50	17	22	28	34	560	285	140	6	M6x20	14	M6	3	0.27
RCK16-28x55	28	55	17	22	28	34	630	255	130	6	M6x20	14	M6	3	0.35
RCK16-30x55	30	55	17	22	28	34	660	235	130	6	M6x20	14	M6	3	0.32
RCK16-32x60	32	60	17	22	28	34	960	295	155	8	M6x20	14	M6	4	0.38
RCK16-35x60	35	60	17	22	28	34	1050	270	155	8	M6x20	14	M6	4	0.35
RCK16-38x65	38	65	17	22	28	34	1140	250	145	8	M6x20	14	M6	4	0.41
RCK16-40x65	40	65	17	22	28	34	1200	235	145	8	M6x20	14	M6	4	0.39
RCK16-45x75	45	75	20	25	33	41	2180	290	170	7	M8x25	35	M8	3	0.65
RCK16-50x80	50	80	20	25	33	41	2430	260	160	7	M8x25	35	M8	3	0.69
RCK16-55x85	55	85	20	25	33	41	3070	270	175	8	M8x25	35	M8	4	0.75
RCK16-60x90	60	90	20	25	33	41	3350	245	165	8	M8x25	35	M8	4	0.80
RCK16-65x95	65	95	20	25	33	41	4080	255	175	9	M8x25	35	M8	3	0.85
RCK16-70x110	70	110	24	30	40	50	6280	280	180	8	M10x30	70	M10	4	1,35
RCK16-75x115	75	115	24	30	40	50	6680	260	170	8	M10x30	70	M10	4	1,42
RCK16-80x120	80	120	24	30	40	50	7130	250	160	8	M10x30	70	M10	4	1,51
RCK16-85x125	85	125	24	30	40	50	8480	260	180	9	M10x30	70	M10	3	1,58
RCK16-90x130	90	130	24	30	40	50	9080	250	170	9	M10x30	70	M10	3	1,66
RCK16-95x135	95	135	24	30	40	50	10580	260	180	10	M10x30	70	M10	4	1,73
RCK16-100x145	100	145	26	32	44	56	13380	270	190	8	M12x35	125	M12	4	2,64
RCK16-110x155	110	155	26	32	44	56	14580	240	180	8	M12x35	125	M12	4	2,84
RCK16-120x165	120	165	26	32	44	56	17880	250	180	9	M12x35	125	M12	4	3,05
RCK16-130x180	130	180	34	40	52	64	29980	240	170	12	M12x35	125	M12	6	4,70
RCK16-140x190	140	190	34	40	54	68	26980	210	150	9	M14x40	190	M14	4	4,95
RCK16-150x200	150	200	34	40	54	68	32980	230	170	10	M14x40	190	M14	5	5,30
RCK16-160x210	160	210	34	40	54	68	37980	230	170	11	M14x40	190	M14	4	5,60
RCK16-170x225	170	225	44	50	64	78	44980	180	130	12	M14x40	190	M14	6	7,90
RCK16-180x235	180	235	44	50	64	78	46980	170	130	12	M14x40	190	M14	6	8,30

RCK 70 - Samostředící/Self-centring

Pro vyšší zatížení/High Torque Units

Možný axiál.posuv náboje

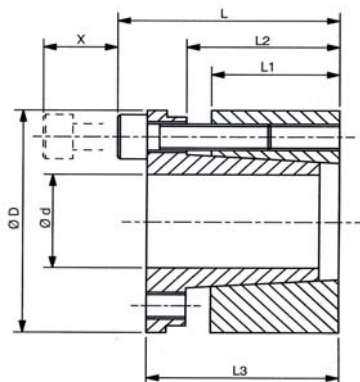
Doporučená tolerance: Hřídel-h8, Náboj-H8

Recommended tolerances: Shaft-h8, Hub-H8

Drsnost povrchu: Rt max. 16µm

Clamping surfaces: Rtmax. 16µm

Materiál: ST = ocel C43 / ST = steel C43


Upínací pouzdra RCK70 - samostředící / Clamping Elements RCK70 - Self-centring

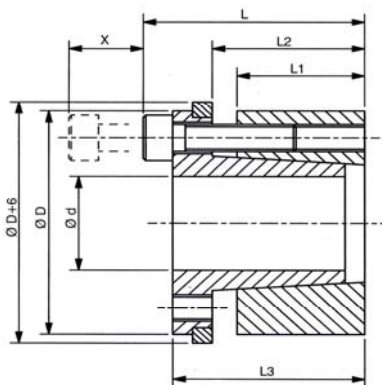
Označení / Obj.č. Part.No.	Rozměry / Dimensions						Moment/ Torque Mt [Nm]	Tlak/Pressure		Up.šrouby/Clamp.Screws			Uvolň./Extr.		Hmot/ Weight [kg]
	d [mm]	D [mm]	L1 [mm]	L2 [mm]	L3 [mm]	L [mm]		Hř./Shaft [N/mm2]	Náb./Hub [N/mm2]	Počet/ No.	Typ/ Type	Moment/ Torq.Nm	Typ/ Type	Počet/ No.	
RCK70-19x47	19	47	26	31	39	45	350	228	98	4	M6x25	17	M6	2	0.38
RCK70-20x47	20	47	26	31	39	45	390	231	100	4	M6x25	17	M6	2	0.37
RCK70-22x47	22	47	26	31	39	45	440	220	95	4	M6x25	17	M6	2	0.36
RCK70-24x50	24	50	26	31	39	45	519	215	102	6	M6x25	17	M6	3	0.39
RCK70-25x50	25	50	26	31	39	45	590	230	105	6	M6x25	17	M6	3	0.38
RCK70-28x55	28	55	26	31	39	45	700	220	110	6	M6x25	17	M6	3	0.45
RCK70-30x55	30	55	26	31	39	45	760	200	120	6	M6x25	17	M6	3	0.42
RCK70-32x60	32	60	26	31	39	45	930	230	114	8	M6x25	17	M6	4	0.52
RCK70-35x60	35	60	26	31	39	45	1030	200	119	8	M6x25	17	M6	4	0.48
RCK70-38x65	38	65	26	31	39	45	1240	210	124	8	M6x25	17	M6	4	0.57
RCK70-40x65	40	65	26	31	39	45	1350	200	125	8	M6x25	17	M6	4	0.54
RCK70-42x75	42	75	30	36	47	55	2170	236	140	6	M8x30	41	M8	3	0.91
RCK70-45x75	45	75	30	36	47	55	2350	236	140	6	M8x30	41	M8	3	0.89
RCK70-48x80	48	80	30	36	47	55	2510	218	135	6	M8x30	41	M8	3	1.00
RCK70-50x80	50	80	30	36	47	55	2580	218	135	6	M8x30	41	M8	3	0.95
RCK70-55x85	55	85	30	36	47	55	3200	223	145	8	M8x30	41	M8	4	1,02
RCK70-60x90	60	90	30	36	47	55	3380	198	157	8	M8x30	41	M8	4	1,11
RCK70-65x95	65	95	30	36	47	55	4160	213	140	8	M8x30	41	M8	4	1,19
RCK70-70x110	70	110	40	46	57	67	6840	225	143	8	M10x35	83	M10	4	2,20
RCK70-75x115	75	115	40	46	62	72	7500	210	138	8	M10x35	83	M10	4	2,53
RCK70-80x120	80	120	40	46	62	72	8100	200	130	8	M10x35	83	M10	4	2,66
RCK70-85x125	85	125	40	46	62	72	9700	210	145	10	M10x35	83	M10	4	2,79
RCK70-90x130	90	130	40	46	62	72	10300	200	138	10	M10x35	83	M10	4	2,93
RCK70-95x135	95	135	40	46	62	72	12100	210	148	10	M10x35	83	M10	4	3,06
RCK70-100x145	100	145	46	52	77	89	15700	216	148	8	M12x45	145	M12	4	4,54
RCK70-110x155	110	155	46	52	77	89	17200	196	139	8	M12x45	145	M12	4	4,92
RCK70-120x165	120	165	46	52	77	89	22500	216	156	10	M12x45	145	M12	4	5,28
RCK70-130x180	130	180	46	52	77	89	24000	196	140	12	M12x45	145	M12	4	5,52
RCK70-140x190	140	190	51	59	84	90	30800	196	145	8	M14x45	230	M14	4	7,25
RCK70-150x200	150	200	51	59	84	90	37150	205	153	10	M14x45	230	M14	5	7,65
RCK70-160x210	160	210	51	59	84	90	40500	205	155	10	M14x45	230	M14	5	8,16
RCK70-170x225	170	225	51	59	84	90	40900	163	123	12	M14x45	230	M14	6	8,75
RCK70-180x235	180	235	51	59	84	90	41300	160	120	12	M14x45	230	M14	6	9,35

RCK 71 - Samostředící/Self-centring
Pro vyšší zatížení/High Torque Units
Doporučená tolerance: Hřídel-h8, Náboj-H8

Recommended tolerances: Shaft-h8, Hub-H8

Drsnost povrchu: Rt max. 16µm

Clamping surfaces: Rtmax. 16µm

Materiál: ST = ocel C43 / ST = steel C43

Upínací pouzdra RCK71 - samostředící / Clamping Elements RCK71 - Self-centring

Označení / Obj.č. Part.No.	Rozměry / Dimensions						Moment/ Torque Mt [Nm]	Tlak/Pressure		Up.šrouby/Clamp.Screws			Uvolň./Extr.		Hmot/ Weight [kg]
	d [mm]	D [mm]	L1 [mm]	L2 [mm]	L3 [mm]	L [mm]		Hř./Shaft [N/mm2]	Náb./Hub [N/mm2]	Počet/ No.	Typ/ Type	Moment/ Torq.Nm	Typ/ Type	Počet/ No.	
RCK71-19x47	19	47	26	31	39	45	300	228	98	4	M6x25	17	M6	2	0.39
RCK71-20x47	20	47	26	31	39	45	320	231	98	4	M6x25	17	M6	2	0.38
RCK71-22x47	22	47	26	31	39	45	370	211	99	4	M6x25	17	M6	2	0.37
RCK71-24x50	24	50	26	31	39	45	430	220	110	6	M6x25	17	M6	3	0.41
RCK71-25x50	25	50	26	31	39	45	480	226	113	6	M6x25	17	M6	3	0.40
RCK71-28x55	28	55	26	31	39	45	590	207	108	6	M6x25	17	M6	3	0.48
RCK71-30x55	30	55	26	31	39	45	650	226	121	6	M6x25	17	M6	3	0.45
RCK71-32x60	32	60	26	31	39	45	800	201	117	8	M6x25	17	M6	4	0.56
RCK71-35x60	35	60	26	31	39	45	860	206	121	8	M6x25	17	M6	4	0.52
RCK71-38x65	38	65	26	31	39	45	1030	201	124	8	M6x25	17	M6	4	0.62
RCK71-40x65	40	65	26	31	39	45	1130	239	146	8	M6x25	17	M6	4	0.59
RCK71-42x75	42	75	30	36	47	55	1930	221	138	6	M8x30	41	M8	3	0.97
RCK71-45x75	45	75	30	36	47	55	1950	221	138	6	M8x30	41	M8	3	0.95
RCK71-48x80	48	80	30	36	47	55	2180	226	145	6	M8x30	41	M8	3	1.07
RCK71-50x80	50	80	30	36	47	55	2210	226	146	6	M8x30	41	M8	3	1.02
RCK71-55x85	55	85	30	36	47	55	2730	226	146	8	M8x30	41	M8	4	1.09
RCK71-60x90	60	90	30	36	47	55	2910	201	134	8	M8x30	41	M8	4	1.19
RCK71-65x95	65	95	30	36	47	55	3570	211	145	8	M8x30	41	M8	4	1.27
RCK71-70x110	70	110	40	46	57	67	5830	226	145	8	M10x35	83	M10	4	2.03
RCK71-75x115	75	115	40	46	62	72	6330	221	151	8	M10x35	83	M10	4	2.65
RCK71-80x120	80	120	40	46	62	72	6840	202	142	8	M10x35	83	M10	4	2.78
RCK71-85x125	85	125	40	46	62	72	8160	221	161	10	M10x35	83	M10	4	2.92
RCK71-90x130	90	130	40	46	62	72	8670	201	146	10	M10x35	83	M10	4	3.07
RCK71-95x135	95	135	40	46	62	72	10200	191	141	10	M10x35	83	M10	4	3.21
RCK71-100x145	100	145	46	52	77	89	13600	201	151	8	M12x45	145	M12	4	4.80
RCK71-110x155	110	155	46	52	77	89	14870	201	182	8	M12x45	145	M12	4	5.20
RCK71-120x165	120	165	46	52	77	89	19460	221	162	10	M12x45	145	M12	4	5.58
RCK71-130x180	130	180	46	52	77	89	20820	202	146	12	M12x45	145	M12	4	5.86
RCK71-140x190	140	190	51	59	84	90	25410	192	141	8	M14x45	230	M14	4	7.62
RCK71-150x200	150	200	51	59	84	90	30720	202	152	10	M14x45	230	M14	5	8.04
RCK71-160x210	160	210	51	59	84	90	33150	202	152	10	M14x45	230	M14	5	8.56
RCK71-170x225	170	225	51	59	84	90	34000	161	121	12	M14x45	230	M14	6	9.19
RCK71-180x235	180	235	51	59	84	90	34250	157	122	12	M14x45	230	M14	6	9.83

RCK 80 - Samostředící/Self-centring Min. rozdíl průměrů/Minimal Axial Space

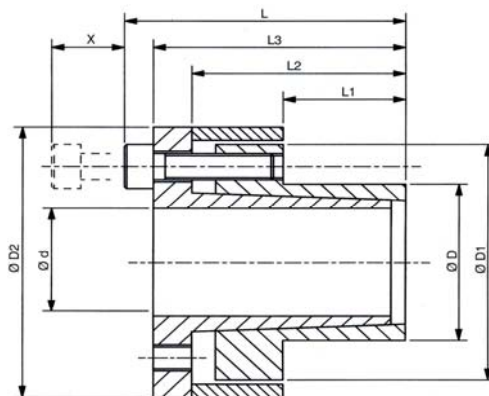
Doporučená tolerance: Hřídel-h8, Náboj-H8

Recommended tolerances: Shaft-h8, Hub-H8

Drsnost povrchu: Rt max. 16µm

Clamping surfaces: Rtmax. 16µm

Materiál: ST = ocel C43 / ST = steel C43



Upínací pouzdra RCK80+A349 - samostředící / Clamping Elements RCK80 - Self-centring+A357

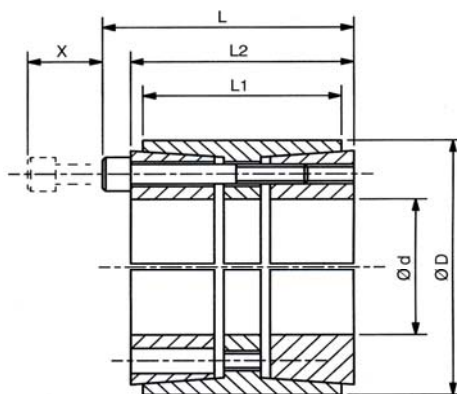
Označení / Obj.č. Part.No.	Rozměry / Dimensions								Moment/ Torque Mt [Nm]	Tlak/Pressure		Up. šrouby/Clamp.Screws			Uvolň./Extr.		Hmot/ Weight [kg]
	d [mm]	D [mm]	D1 [mm]	D2 [mm]	L1 [mm]	L2 [mm]	L3 [mm]	L [mm]		Hř./Shaft [N/mm2]	Náb./Hub [N/mm2]	Počet/ No.	Typ/ Type	Moment/ Torq.Nm	Typ/ Type	Počet/ No.	
RCK80-6x14	6	14	23	25	10	18,5	22,5	25,5	12	190	80	3	M3x10	2,2	M3	2	0.04
RCK80-8x15	8	15	24	27	12	21,5	25,5	29,5	29	205	110	3	M4x12	5	M4	2	0.05
RCK80-9x16	9	16	25	28	14	23,5	27,5	31,5	31	150	85	3	M4x12	5	M4	2	0.07
RCK80-10x16	10	16	25	28	14	23,5	27,5	31,5	35	140	85	3	M4x12	5	M4	2	0.06
RCK80-11x18	11	18	28	32	14	23,5	27,5	31,5	52	170	105	4	M4x12	5	M4	2	0.09
RCK80-12x18	12	18	28	32	14	23,5	27,5	31,5	58	150	100	4	M4x12	5	M4	2	0.08
RCK80-14x23	14	23	35	39	14	23,5	27,5	31,5	69	140	80	4	M4x12	5	M4	2	0.18
RCK80-15x24	15	24	40	45	16	29,5	36,5	42,5	170	158	98	4	M6x18	17	M6	2	0.22
RCK80-16x24	16	24	40	45	16	29,5	36,5	42,5	180	148	98	4	M6x18	17	M6	2	0.21
RCK80-18x26	18	26	42	47	19	32,5	39,5	45,5	200	180	125	4	M6x18	17	M6	2	0.24
RCK80-19x27	19	27	43	49	19	32,5	39,5	45,5	210	170	120	4	M6x18	17	M6	2	0.25
RCK80-20x28	20	28	44	50	19	32,5	39,5	45,5	220	160	115	4	M6x18	17	M6	2	0.26
RCK80-22x32	22	32	48	54	26	39,5	46,5	52,5	250	115	80	4	M6x18	17	M6	2	0.35
RCK80-24x34	24	34	50	56	26	39,5	46,5	52,5	395	146	102	6	M6x18	17	M6	3	0.36
RCK80-25x34	25	34	50	56	26	39,5	46,5	52,5	410	140	102	6	M6x18	17	M6	3	0.40
RCK80-28x39	28	39	55	61	25,5	39,5	46,5	52,5	465	135	98	6	M6x18	17	M6	3	0.42
RCK80-30x41	30	41	57	62	25,5	39,5	46,5	52,5	510	127	90	6	M6x18	17	M6	3	0.44
RCK80-32x43	32	43	59	65	25,5	39,5	46,5	52,5	705	146	108	8	M6x18	17	M6	4	0.46
RCK80-35x47	35	47	62	69	31,5	45,5	52,5	58,5	790	105	80	8	M6x18	17	M6	4	0.57
RCK80-38x50	38	50	66	72	31,5	45,5	52,5	58,5	860	100	76	8	M6x18	17	M6	4	0.60
RCK80-40x53	40	53	69	75	31,5	45,5	52,5	58,5	900	96	72	8	M6x18	17	M6	4	0.66
RCK80-42x55	42	55	71	78	31,5	45,5	52,5	58,5	940	90	70	8	M6x18	17	M6	4	0.71
RCK80-45x59	45	59	80	86	45	62,5	71	79	1840	110	85	8	M8x22	41	M8	4	1,14
RCK80-48x62	48	62	81	87	45	62,5	71	79	2000	105	80	8	M8x22	41	M8	4	1,40
RCK80-50x65	50	65	86	92	45	62,5	71	79	2100	100	75	8	M8x22	41	M8	4	1,58
RCK80-55x71	55	71	92	98	55	72,5	81	89	2580	85	65	9	M8x22	41	M8	3	2.00
RCK80-60x77	60	77	98	104	55	72,5	81	89	2800	75	60	9	M8x22	41	M8	3	2,30
RCK80-65x84	65	84	105	111	55	72,5	81	89	3050	70	55	9	M8x22	41	M8	3	2,50
RCK80-70x90	70	90	113	119	65	86,5	96,5	107	5250	90	70	9	M10x25	83	M10	3	2,83
RCK80-75x95	75	95	119	126	65	86,5	96,5	107	5600	80	65	9	M10x25	83	M10	3	3,10
RCK80-80x100	80	100	125	131	65	86,5	96,5	107	8000	100	80	12	M10x25	83	M10	4	3,27
RCK80-85x106	85	106	131	137	65	86,5	96,5	107	8500	95	75	12	M10x25	83	M10	4	3,50
RCK80-90x112	90	112	137	144	65	86,5	96,5	107	9000	90	75	12	M10x25	83	M10	4	3,80
RCK80-95x120	95	120	142	149	65	86,5	96,5	107	11000	100	80	14	M10x25	83	M10	4	4,20
RCK80-100x125	100	125	147	154	65	86,5	96,5	107	15000	120	95	18	M10x25	83	M10	4	4,90

RCK 11 - Samostředící/Self-centring
Max.krouticí momenty/Maximum Torque Units
Doporučená tolerance: Hřídel-h8, Náboj-H8

Recommended tolerances: Shaft-h8, Hub-H8

Drsnost povrchu: Rt max. 16µm

Clamping surfaces: Rtmax. 16µm

Materiál: ST = ocel C43 / ST = steel C43

Upínací pouzdra RCK11 - samostředící / Clamping Elements RCK11 - Self-centring

Označení / Obj.č. Part.No.	Rozměry / Dimensions					Moment/ Torque Mt [Nm]	Tlak/Pressure		Up.šrouby/Clamp.Screws			Uvolň./Extr.		Hmot/ Weight [kg]
	d [mm]	D [mm]	L1 [mm]	L2 [mm]	L [mm]		Hř./Shaft [N/mm2]	Náb./Hub [N/mm2]	Počet/ No.	Typ/ Type	Moment/ Torq.Nm	Typ/ Type	Počet/ No.	
RCK11-25x55	25	55	32	40	46	840	295	134	6	M6x35	17	M6	3	0,39
RCK11-28x55	28	55	32	40	46	940	264	134	6	M6x35	17	M6	3	0,37
RCK11-30x55	30	55	32	40	46	1000	246	134	6	M6x35	17	M6	3	0,35
RCK11-35x60	35	60	44	54	60	1360	174	101	7	M6x45	17	M6	3	0,62
RCK11-38x75	38	75	44	54	62	2740	296	150	7	M8x50	41	M8	3	1,02
RCK11-40x75	40	75	44	54	62	2880	281	150	7	M8x50	41	M8	3	0,96
RCK11-42x75	42	75	44	54	62	3030	268	150	7	M8x50	41	M8	3	0,91
RCK11-45x75	45	75	44	54	62	3240	250	150	7	M8x50	41	M8	3	0,89
RCK11-48x80	48	80	44	54	62	3950	207	124	8	M8x50	41	M8	3	1,10
RCK11-50x80	50	80	56	64	72	4150	200	98	8	M8x50	41	M8	3	1,30
RCK11-55x85	55	85	56	64	72	5150	205	104	9	M8x50	41	M8	3	1,40
RCK11-60x90	60	90	56	64	72	6200	202	106	10	M8x50	41	M8	4	1,50
RCK11-65x95	65	95	56	64	72	6750	187	100	10	M8x50	41	M8	4	1,60
RCK11-70x110	70	110	70	78	88	11500	223	114	10	M10x60	83	M10	4	3,00
RCK11-75x115	75	115	70	78	88	12300	223	114	10	M10x60	83	M10	4	3,20
RCK11-80x120	80	120	70	78	88	14500	215	115	11	M10x60	83	M10	4	3,50
RCK11-85x125	85	125	70	78	88	15400	215	115	12	M10x60	83	M10	5	3,70
RCK11-90x130	90	130	70	78	88	17800	208	115	12	M10x60	83	M10	5	3,90
RCK11-95x135	95	135	70	78	88	18700	208	115	12	M10x60	83	M10	5	4,10
RCK11-100x145	100	145	90	100	112	26300	200	107	11	M12x80	145	M12	4	6,00
RCK11-110x155	110	155	90	100	112	31800	198	110	12	M12x80	145	M12	5	7,00
RCK11-120x165	120	165	90	100	112	40400	212	120	14	M12x80	145	M12	5	7,80
RCK11-130x180	130	180	104	116	130	51500	192	112	12	M14x90	230	M14	5	10,00
RCK11-140x190	140	190	104	116	130	64700	208	124	14	M14x90	230	M14	7	11,00
RCK11-150x200	150	200	104	116	130	74200	208	127	15	M14x90	230	M14	6	12,00
RCK11-160x210	160	210	104	116	130	84500	208	128	16	M14x90	230	M14	7	13,00
RCK11-170x225	170	225	134	148	164	108200	182	113	14	M16x110	355	M16	6	18,00
RCK11-180x235	180	235	134	148	164	123250	184	115	15	M16x110	355	M16	7	20,00
RCK11-190x250	190	250	134	148	164	133800	186	116	16	M16x110	355	M16	7	22,00
RCK11-200x260	200	260	134	148	164	146000	177	112	16	M16x110	355	M16	7	24,00
RCK11-220x285	220	285	134	148	164	181000	188	115	18	M16x110	355	M16	8	27,00
RCK11-240x305	240	305	134	148	164	218000	184	119	20	M16x110	355	M16	9	30,00
RCK11-260x325	260	325	134	148	164	250000	178	117	21	M16x110	355	M16	10	33,00
RCK11-280x355	280	355	165	177	197	360000	185	117	18	M20x130	690	M20	8	48,00
RCK11-300x375	300	375	165	177	197	428000	192	123	20	M20x130	690	M20	9	52,00

RCK 60 - Samostředící/Self-centring
Kompaktní pouzdra/Compact Units



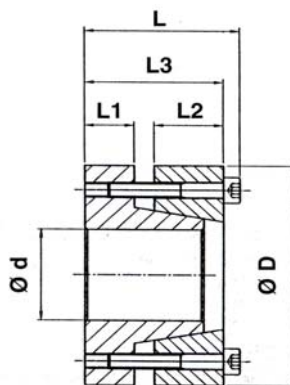
Doporučená tolerance: Hřídel-h8, Náboj-H8

Recommended tolerances: Shaft-h8, Hub-H8

Drsnost povrchu: Rt max. 16µm

Clamping surfaces: R_tmax. 16µm

Materiál: ST = ocel C43 / ST = steel C43



Upínací pouzdra RCK60 - samostředící / Clamping Elements RCK60 - Self-centring

Označení / Obj.č. Part.No.	Rozměry / Dimensions						Moment/ Torque Mt [Nm]	Ax.síla Ax.Force F [N]	Tlak/Pressure		Up.šrouby/Clamp.Screws			Uvolň./Extr.	
	d [mm]	D [mm]	L1 [mm]	L2 [mm]	L3 [mm]	L [mm]			Hř./Shaft [N/mm2]	Náb./Hub [N/mm2]	Počet/ No.	Typ/ Type	Moment/ Torq.Nm	Typ/ Type	Počet/ No.
RCK60-20x47	20	47	10	14	28	34	245	29400	210	93	5	M6x25	17	M6	3
RCK60-22x47	22	47	10	14	28	34	265	30000	196	93	5	M6x25	17	M6	3
RCK60-24x50	24	50	10	14	28	34	370	32300	215	108	6	M6x25	17	M6	3
RCK60-25x50	25	50	10	14	28	34	390	33300	210	108	6	M6x25	17	M6	3
RCK60-30x55	30	55	10	14	28	34	480	41200	186	98	6	M6x25	17	M6	3
RCK60-35x60	35	60	10	14	28	34	735	44100	186	108	8	M6x25	17	M6	4
RCK60-38x65	38	65	10	14	28	34	790	46100	206	103	8	M6x25	17	M6	4
RCK60-40x65	40	65	10	14	28	34	830	47000	186	103	8	M6x25	17	M6	4
RCK60-42x75	42	75	12	18	35	43	1450	66000	225	132	7	M8x30	41	M8	4
RCK60-45x75	45	75	12	18	35	43	1560	70000	220	132	7	M8x30	41	M8	4
RCK60-50x80	50	80	12	18	35	43	1650	72000	206	127	7	M8x30	41	M8	4
RCK60-55x85	55	85	12	18	35	43	2250	80000	210	132	8	M8x30	41	M8	4
RCK60-60x90	60	90	12	18	35	43	2450	83000	186	122	8	M8x30	41	M8	4
RCK60-65x95	65	95	12	18	35	43	2890	90000	200	132	9	M8x30	41	M8	3
RCK60-70x110	70	110	16	24	46	56	4700	130000	220	140	8	M10x40	83	M10	4

RCK 61 - Samostředící/Self-centring
Malé rozměry pouzdra/Compact Small Units

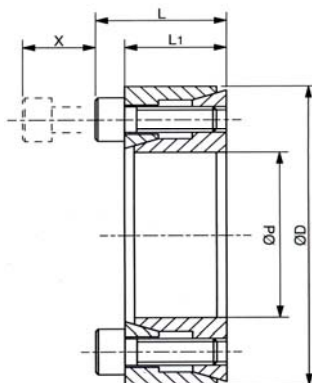
Doporučená tolerance: Hřídel-h8, Náboj-H8

Recommended tolerances: Shaft-h8, Hub-H8

Drsnost povrchu: Rt max. 16µm

Clamping surfaces: Rtmax. 16µm

Materiál: ST = ocel C43 / ST = steel C43



Upínací pouzdra RCK61 - samostředící / Clamping Elements RCK61 - Self-centring

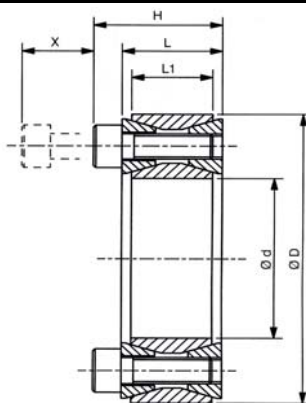
Označení / Obj.č. Part.No.	Rozměry / Dimensions				Moment/ Torque Mt [Nm]	Tlak/Pressure		Up.šrouby/Clamp.Screws			Uvolň./Extr.		Hmot/ Weight [kg]
	d [mm]	D [mm]	L1 [mm]	L [mm]		Hř./Shaft [N/mm2]	Náb./Hub [N/mm2]	Počet/ No.	Typ/ Type	Moment/ Torq.Nm	Typ/ Type	Počet/ No.	
RCK61-10x20	10	20	13	15,5	15	110	55	4	M2,5x12	1,2	M2,5	2	0.08
RCK61-12x22	12	22	13	15,5	20	90	50	4	M2,5x12	1,2	M2,5	2	0.09
RCK61-14x26	14	26	17	20	35	105	55	4	M3x16	2,1	M3	2	0.12
RCK61-15x28	15	28	17	20	40	100	50	4	M3x16	2,1	M3	2	0.13
RCK61-16x32	16	32	17	21	70	130	65	4	M4x16	4,9	M4	2	0.15
RCK61-18x35	18	35	21	25	80	115	60	4	M4x20	4,9	M4	2	0.20
RCK61-19x35	19	35	21	25	85	110	60	4	M4x20	4,9	M4	2	0.19
RCK61-20x38	20	38	21	26	220	220	115	6	M5x20	9,7	M5	3	0.21
RCK61-22x40	22	40	21	26	240	200	110	6	M5x20	9,7	M5	3	0.22
RCK61-24x47	24	47	26	32	380	220	110	6	M6x25	16,2	M6	3	0.31
RCK61-25x47	25	47	26	32	390	210	110	6	M6x25	16,2	M6	3	0.30

RCK 40 - Nesamostředící/Not self-centring
Kompaktní pouzdra/Compact Units
Doporučená tolerance: Hřídel-h9, Náboj-H9

Recommended tolerances: Shaft-h9, Hub-H9

Drsnost povrchu: Rt max. 16µm

Clamping surfaces: Rtmax. 16µm

Materiál: ST = ocel C43 / ST = steel C43

Upínací pouzdra RCK40 - nesamostředící / Clamping Elements RCK40 - Not self-centring

Označení / Obj.č. Part.No.	Rozměry / Dimensions					Moment/ Torque Mt [Nm]	Tlak/Pressure		Up.šrouby/Clamp.Screws			Uvolň./Extr.		Hmot/ Weight [kg]
	d [mm]	D [mm]	L1 [mm]	L3 [mm]	L [mm]		Hř./Shaft [N/mm2]	Náb./Hub [N/mm2]	Počet/ No.	Typ/ Type	Moment/ Torq.Nm	Typ/ Type	Počet/ No.	
RCK40-19x47	19	47	17	20	28	255	220	90	8	M6x18	14	M8	2	0.25
RCK40-20x47	20	47	17	20	28	270	210	90	8	M6x18	14	M8	2	0.24
RCK40-22x47	22	47	17	20	28	300	195	90	8	M6x18	14	M8	2	0.23
RCK40-24x50	24	50	17	20	28	360	195	95	9	M6x18	14	M8	3	0.26
RCK40-25x50	25	50	17	20	28	380	190	95	9	M6x18	14	M8	3	0.25
RCK40-28x55	28	55	17	20	28	500	187	96	10	M6x18	14	M8	4	0.30
RCK40-30x55	30	55	17	20	28	530	176	96	10	M6x18	14	M8	4	0.29
RCK40-32x60	32	60	17	20	28	630	192	105	12	M6x18	14	M8	4	0.34
RCK40-35x60	35	60	17	20	28	700	180	105	12	M6x18	14	M8	4	0.32
RCK40-38x65	38	65	17	20	28	860	183	107	14	M6x18	14	M8	4	0.36
RCK40-40x65	40	65	17	20	28	910	180	110	14	M6x18	14	M8	4	0.34
RCK40-42x75	42	75	20	24	34	1500	226	125	12	M8x22	35	M10	4	0.60
RCK40-45x75	45	75	20	24	34	1610	210	125	12	M8x22	35	M10	4	0.57
RCK40-48x80	48	80	20	24	34	1700	196	115	12	M8x22	35	M10	4	0.63
RCK40-50x80	50	80	20	24	34	1770	190	115	12	M8x22	35	M10	4	0.60
RCK40-55x85	55	85	20	24	34	2270	200	130	14	M8x22	35	M10	4	0.63
RCK40-60x90	60	90	20	24	34	2470	180	120	14	M8x22	35	M10	4	0.69
RCK40-65x95	65	95	20	24	34	3040	190	130	16	M8x22	35	M12	4	0.73
RCK40-70x110	70	110	24	28	40	4600	210	130	14	M10x25	70	M12	4	1,26
RCK40-75x115	75	115	24	28	40	4900	195	125	14	M10x25	70	M12	4	1,33
RCK40-80x120	80	120	24	28	40	5200	180	120	14	M10x25	70	M12	4	1,40
RCK40-85x125	85	125	24	28	40	6300	195	130	16	M10x25	70	M12	4	1,49
RCK40-90x130	90	130	24	28	40	6600	180	125	16	M10x25	70	M12	4	1,53
RCK40-95x135	95	135	24	28	40	7900	195	135	18	M10x25	70	M12	4	1,62
RCK40-100x145	100	145	26	33	47	9600	195	135	14	M12x30	125	M14	4	2,01
RCK40-110x155	110	155	26	33	47	10500	180	125	14	M12x30	125	M14	4	2,15
RCK40-120x165	120	165	26	33	47	13100	185	135	16	M12x30	125	M14	4	2,35
RCK40-130x180	130	180	34	38	52	17600	165	115	20	M12x35	125	M14	4	3,51
RCK40-140x190	140	190	34	38	52	20900	165	125	22	M12x35	125	M14	4	3,85
RCK40-150x200	150	200	34	38	52	24200	170	125	24	M12x35	125	M14	4	4,07
RCK40-160x210	160	210	34	38	52	28000	170	130	26	M12x35	125	M14	4	4,30
RCK40-170x225	170	225	38	44	60	32800	160	120	22	M14x40	190	M18	4	5,78
RCK40-180x235	180	235	38	44	60	37800	165	125	24	M14x40	190	M16	4	6,05
RCK40-190x250	190	250	46	52	68	46500	150	115	28	M14x45	190	M16	4	8,25
RCK40-200x260	200	260	46	52	68	52500	150	115	30	M14x45	190	M16	5	8,65
RCK40-220x285	220	285	50	56	74	68000	150	115	26	M16x50	295	M18	4	11,25

RCK 50 - Nesamostředící/Not self-centring
Upínací kroužky/Clamping Rings

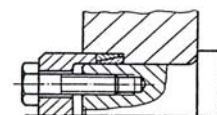
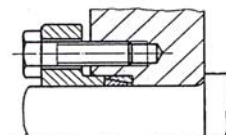
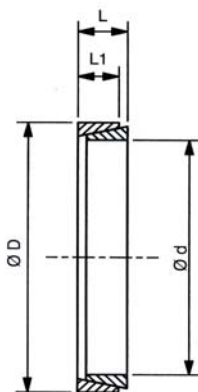
Doporučená tolerance: $d < 38 \text{ mm } h6/H7$, $d > 40 \text{ mm } h8/H8$

Recommended tolerances: $d < 38 \text{ mm } h6/H7$, $d > 40 \text{ mm } h8/H8$

Drsnost povrchu: $R_t \text{ max. } 16 \mu\text{m}$

Clamping surfaces: $R_{t\text{max.}} 16 \mu\text{m}$

Materiál: ST = ocel C43 / ST = steel C43



Upínací pouzdra RCK50 - nesamostředící / Clamping Elements RCK50 - Not self-centring

Označení / Obj.č. Part.No.	Rozměry / Dimensions				Ax.síla Ax.Force * F [kN]	Moment/ Torque Mt [Nm]	Tlak/Pressure		Hmot/ Weight [kg]
	d [mm]	D [mm]	L1 [mm]	L [mm]			Hř./Shaft [N/mm ²]	Náb./Hub [N/mm ²]	
RCK50-6x9	6	9	3,7	4,5	3,8	2,4	115	75	1,20
RCK50-7x10	7	10	3,7	4,5	3,9	3	105	70	1,40
RCK50-8x11	8	11	3,7	4,5	5,3	4,7	120	90	1,50
RCK50-9x12	9	12	3,7	4,5	15,6	7,9	140	105	1,70
RCK50-10x13	10	13	3,7	4,5	15,6	9,5	135	105	1,80
RCK50-12x15	12	15	3,7	4,5	15,6	11,4	115	90	2,20
RCK50-13x16	13	16	3,7	4,5	15,6	13,1	110	90	2,30
RCK50-14x18	14	18	5,3	6,3	25,4	22,3	115	90	4,90
RCK50-15x19	15	19	5,3	6,3	25,4	24,3	110	85	5,30
RCK50-16x20	16	20	5,3	6,3	25,4	27,3	105	85	5,50
RCK50-17x21	17	21	5,3	6,3	25,4	29,8	105	85	5,80
RCK50-18x22	18	22	5,3	6,3	25,4	32,4	100	80	6,10
RCK50-19x24	19	24	5,3	6,3	36	49	140	110	7,80
RCK50-20x25	20	25	5,3	6,3	36	53	135	105	8,20
RCK50-22x26	22	26	5,3	6,3	36	66	135	115	7,30
RCK50-24x28	24	28	5,3	6,3	36	73	130	110	8,00
RCK50-25x30	25	30	5,3	6,3	36	72	115	95	10,10
RCK50-28x32	28	32	5,3	6,3	36	86	115	100	12,0
RCK50-30x35	30	35	5,3	6,3	36	91	100	85	10,0
RCK50-32x36	32	36	5,3	6,3	45	131	130	115	17,0
RCK50-35x40	35	40	6	7	54	171	125	110	20,0
RCK50-36x42	36	42	6	7	54	169	115	100	21,0
RCK50-38x44	38	44	6	7	54	181	110	95	23,0
RCK50-40x45	40	45	6,6	8	66	231	115	105	28,0
RCK50-42x48	42	48	6,6	8	66	235	110	95	42,0
RCK50-45x52	45	52	8,6	10	99	353	105	95	45,0
RCK50-48x55	48	55	8,6	10	132	572	155	135	47,0
RCK50-50x57	50	57	8,6	10	132	602	150	130	50,0
RCK50-55x62	55	62	8,6	10	132	670	140	125	67,0
RCK50-56x64	56	64	10,4	12	157,2	790	130	115	72,0
RCK50-60x68	60	68	10,4	12	157,2	860	125	110	76,0
RCK50-63x71	63	71	10,4	12	157,2	910	120	105	78,00
RCK50-65x73	65	73	10,4	12	157,2	950	115	100	110,00
RCK50-70x79	70	79	12,2	14	209,6	1380	125	110	114,00
RCK50-75x84	75	84	12,2	14	209,6	1450	115	100	118,00
RCK50-80x91	80	91	15	17	290	2200	125	105	187,00

* Axiální síla nutná pro upnutí / Axial Force necessary to clamp

RCK 19 - Nesamostředící/Not self-centring Vnější upínací pouzdra/Clamping Discs

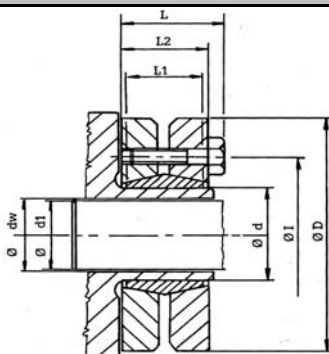


Doporučená tolerance: d-h8, dw<30 /H6/j6, dw>30mm H6/h6
Recommended tolerances: d-h8, dw<30 H6/j6, dw>30mm H6/h6

Drsnost povrhu: Rt max. 16µm

Clamping surfaces: R_{tmax} . 16 μ m

Materiál: ST = ocel C43 / ST = steel C43



Upínací pouzdra RCK19 - samostředící / Clamping Elements RCK19 - Self-centring

Označení / Obj.č. Part.No.	Rozměry / Dimensions							Tlak/ Press. [N/mm2]	Moment/ Torque Mt [Nm]	Max. dw-d1 [mm]	Up.šrouby/Clamp.Screws			Hmot/ Weight [kg]
	d [mm]	D [mm]	dw [mm]	L1 [mm]	L2 [mm]	L [mm]	I [mm]				Počet/ No.	Typ/ Type	Moment/ Torq.Nm	
RCK19-24x50	24	50	19	14	19,5	23	36	286	170	0,017	M5x18	6	4	0.2
			20						210					
			21						250					
RCK19-30x60	30	60	24	16	21,5	25	44	233	300	0,017	M5x18	7	4	0.3
			25						340					
			26						380					
RCK19-36x72	36	72	28	18	23,5	27,5	52	307	440	0,032	M6x20	5	12	0.4
			30						570					
			31						630					
RCK19-44x80	44	80	32	20	25,5	29,5	61	317	620	0,032	M6x20	7	12	0.6
			35						780					
			36						860					
RCK19-50x90	50	90	38	22	27,5	31,5	70	289	940	0,032	M6x25	8	12	0.8
			40						1160					
			42						1380					
RCK19-55x100	55	100	42	23	30,5	34,5	75	252	1160	0,032	M6x25	8	12	1,1
			45						1520					
			48						1880					
RCK19-62x110	62	110	48	23	30,5	34,5	86	279	1850	0,048	M6x25	10	12	1,3
			50						2200					
			52						2400					
RCK19-68x115	68	115	50	23	30,5	34,5	86	255	2000	0,048	M6x25	10	12	1,4
			55						2500					
			60						3150					
RCK19-75x138	75	138	55	25	32,5	37,8	100	273	2500	0,048	M8x30	7	30	1,7
			60						3200					
			65						3950					
RCK19-80x145	80	145	60	25	32,5	37,8	100	256	3200	0,048	M8x30	7	30	1,9
			65						3900					
			70						4600					
RCK19-90x155	90	155	65	30	39	44,3	114	271	4750	0,048	M8x35	10	30	3,3
			70						6000					
			75						7250					
RCK19-100x170	100	170	70	34	44	49,3	124	258	6900	0,048	M8x35	12	30	4,7
			75						7500					
			80						9000					
RCK19-110x185	110	185	75	39	50	56,4	136	244	7200	0,048	M10x40	9	59	5,9
			80						9000					
			85						10800					
RCK19-125x215	125	215	85	42	54	60,4	160	266	11000	0,069	M10x40	12	59	8,5
			90						13000					
			95						15000					
RCK19-140x230	140	230	95	46	60,5	68	175	264	15100	0,069	M12x45	10	100	9,0
			100						17600					
			105						20100					
RCK19-155x265	155	265	105	50	64,5	72	192	263	22000	0,069	M12x50	12	100	11,0
			110						25000					
			115						28000					
RCK19-165x290	165	290	115	56	71	81	210	277	31000	0,069	M16x55	8	250	15,0
			120						35000					
			125						39000					
RCK19-175x300	175	300	125	56	71	81	220	261	36000	0,079	M16x55	8	250	15,8
			130						41000					
			135						45000					
RCK19-185x330	185	330	135	71	86	96	236	237	52000	0,09	M16x70	10	250	21,0
			140						57000					
			145						62000					

RCK 95

Hřídelové spojky / Shaft Couplings

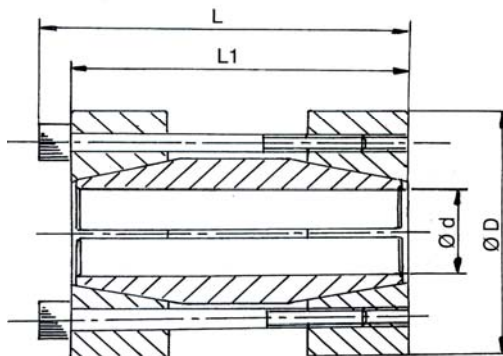
Doporučená tolerance: Hřídel-h8

Recommended tolerances: Shaft-h8

Drsnost povrchu: Rt max. 16µm

Clamping surfaces: Rtmax. 16µm

Materiál: ST = ocel C43 / ST = steel C43



Upínací pouzdra RCK95 - hřídelové spojky / Clamping Elements RCK95 - Shaft Couplings

Označení / Obj.č. Part.No.	Rozměry / Dimensions				Moment/ Torque Mt [Nm]	Tlak/Pressure Hř./Shaft [N/mm2]	Up.šrouby/Clamp.Screws			Hmot/ Weight [kg]
	d [mm]	D [mm]	L1 [mm]	L [mm]			Počet/ No.	Typ/ Type	Moment/ Torq.Nm	
RCK95-17x50	17	50	50	56	200	110	4	M6x40	17	0,46
RCK95-18x50	18	50	50	56	220	110	4	M6x40	17	0,45
RCK95-19x50	19	50	50	56	230	110	4	M6x40	17	0,44
RCK95-20x50	20	50	50	56	240	105	4	M6x40	17	0,44
RCK95-24x55	24	55	60	66	290	120	4	M6x50	17	0,65
RCK95-25x55	25	55	60	66	450	110	6	M6x50	17	0,63
RCK95-28x60	28	60	60	66	510	110	6	M6x50	17	0,75
RCK95-30x60	30	60	60	66	550	105	6	M6x50	17	0,71
RCK95-32x63	32	63	60	66	580	90	6	M6x50	17	0,73
RCK95-35x75	35	75	75	83	790	105	4	M8x60	41	1,33
RCK95-38x75	38	75	75	83	850	100	4	M8x60	41	1,20
RCK95-40x75	40	75	75	83	900	95	4	M8x60	41	1,19
RCK95-42x78	42	78	75	83	950	90	4	M8x60	41	1,28
RCK95-45x85	45	85	85	93	1520	110	6	M8x70	41	1,72
RCK95-48x90	48	90	85	93	1620	100	6	M8x70	41	1,88
RCK95-50x90	50	90	85	93	1690	95	6	M8x70	41	1,90
RCK95-55x94	55	94	85	93	2470	110	8	M8x70	41	2,00
RCK95-60x100	60	100	85	93	2710	95	8	M8x70	41	2,17
RCK95-65x105	65	105	85	93	2930	90	8	M8x70	41	3,95
RCK95-70x115	70	115	100	110	3770	90	6	M10x80	83	5,25
RCK95-*75x125	*75	125	100	110	4030	80	6	M10x80	83	5,46
RCK95-*80x125	*80	125	100	110	4300	70	6	M10x80	83	5,30

RCK 25 - Nesamostředící/Not self-centring

RCK 26 - Samostředící/Self-centring

Jednoduchá pouzdra s maticí/Sindle Nut Clampings

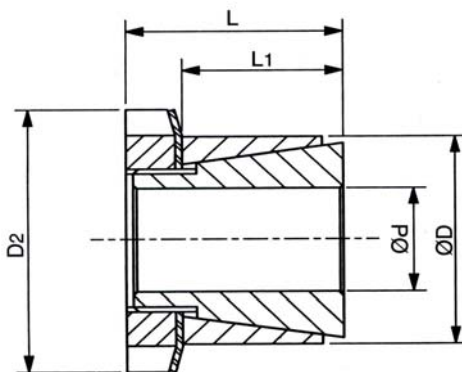
Doporučená tolerance: Hřídel-h8, Náboj-H8

Recommended tolerances: Shaft-h8, Hub-H8

Drsnost povrchu: Rt max. 16µm

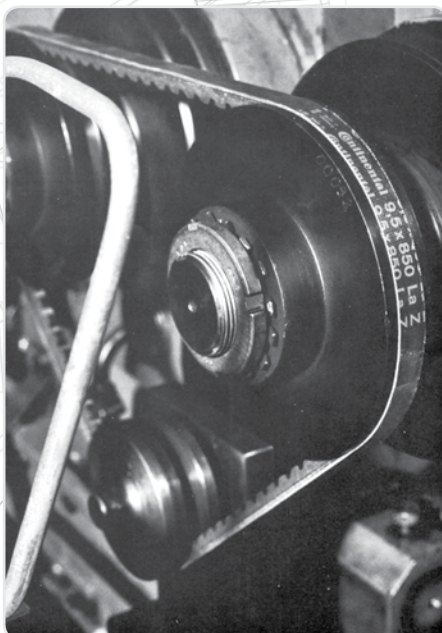
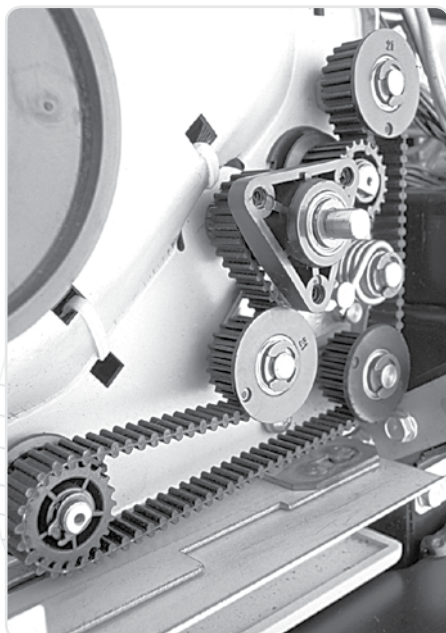
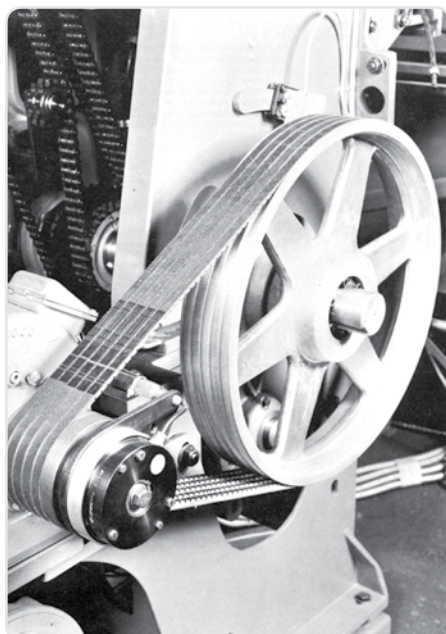
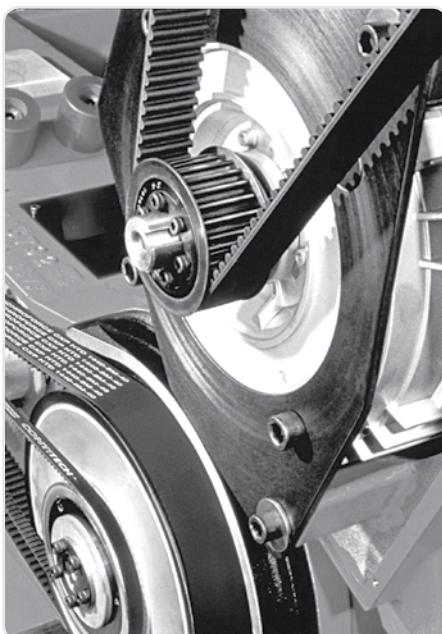
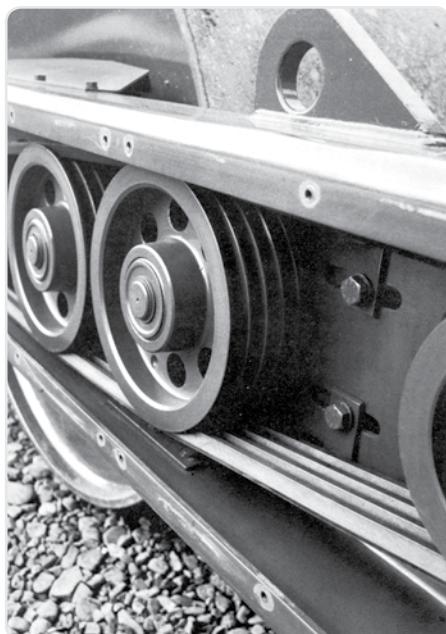
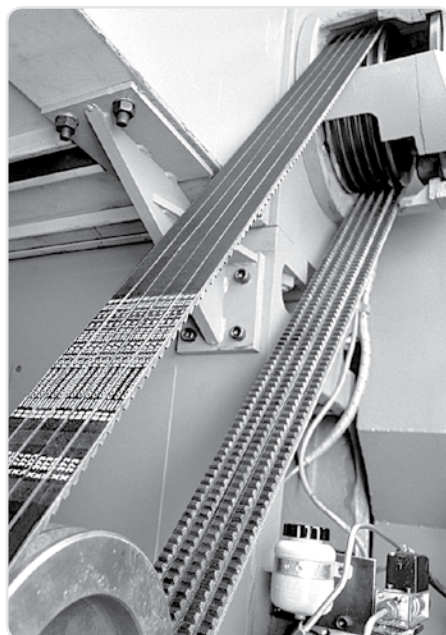
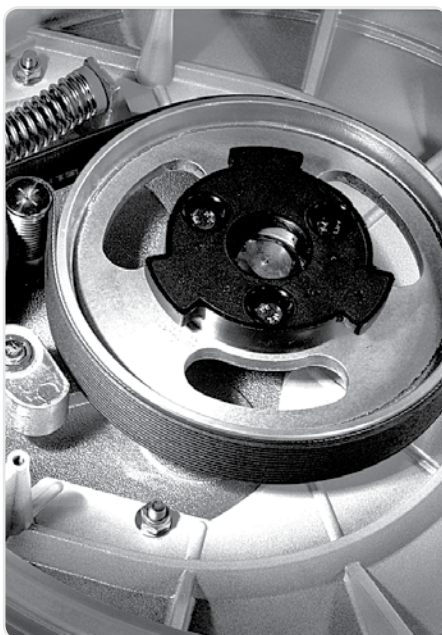
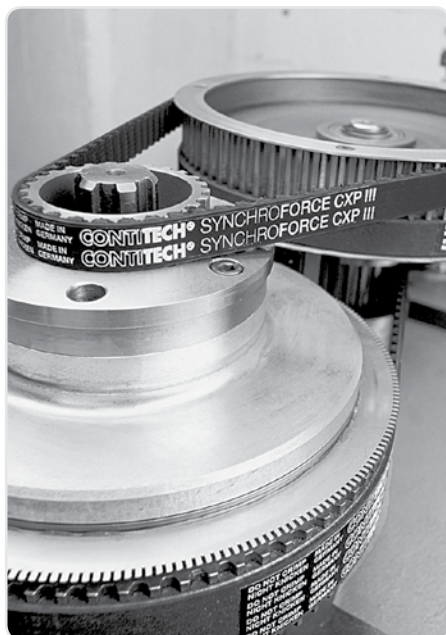
Clamping surfaces: Rtmax. 16µm

Materiál: ST = ocel C43 / ST = steel C43



Upínací pouzdra BK25 a BK26 / Clamping Elements BK25 and BK26

Označení / Obj.č. Part.No.	Rozměry / Dimensions					Moment/ Torque Mt [Nm]	Ax.síla Ax.Force F [kN]	Tlak/Pressure			Utahovací.matice/Locking Nut		
	d [mm]	D [mm]	D2 [mm]	L [mm]	L1 [mm]			Hř./Shaft [N/mm2]	Náb./Hub [N/mm2]		Typ/ Type	Závit/ Thread	Mom./ Nm
BK25-14x25	14	25	32	16,5	6,5	37	5	130	73		KM4	M20x1	65
BK25-15x25	15	25	32	16,5	6,5	40	5	122	73		KM4	M20x1	65
BK25-16x25	16	25	32	16,5	6,5	42	5	114	73		KM4	M20x1	65
BK25-18x30	18	30	38	17	7	65	7	133	80		KM5	M25x1,5	85
BK25-19x30	19	30	38	17	7	60	6	111	70		KM5	M25x1,5	95
BK25-20x30	20	30	38	17	7	70	7	120	80		KM5	M25x1,5	110
BK25-24x35	24	35	45	17	7	100	8	117	80		KM6	M30x1,5	155
BK25-25x35	25	35	45	17	7	110	9	126	90		KM6	M30x1,5	160
BK25-28x40	28	40	52	20	8	140	10	100	70		KM7	M35x1,5	200
BK25-30x40	30	40	52	20	8	170	11	107	80		KM7	M35x1,5	240
BK25-32x45	32	45	58	22	9	210	13	113	80		KM8	M40x1,5	320
BK25-35x45	35	45	58	22	9	230	13	103	80		KM8	M40x1,5	320
BK25-40x52	40	52	65	23	9	330	17	113	90		KM9	M45x1,5	440
BK25-45x57	45	57	70	25,5	10	440	20	110	90		KM10	M50x1,5	550
BK25-50x62	50	62	75	25,5	10	530	21	108	90		KM11	M55x2	660
BK25-60x73	60	73	85	29,5	12	830	28	93	80		KM13	M65x2	900
BK26-14x25	14	25	32	29	17	90	13	143	80		KM4	M20x1	90
BK26-15x25	15	25	32	29	17	100	13	133	80		KM4	M20x1	90
BK26-16x25	16	25	32	29	17	80	10	94	60		KM4	M20x1	70
BK26-18x30	18	30	38	31	18	200	22	183	110		KM5	M25x1,5	190
BK26-19x30	19	30	38	31	18	170	18	142	90		KM5	M25x1,5	150
BK26-20x30	20	30	38	31	18	130	13	90	60		KM5	M25x1,5	110
BK26-24x35	24	35	45	35	22	270	23	117	80		KM6	M30x1,5	230
BK26-25x35	25	35	45	35	22	200	16	84	60		KM6	M30x1,5	170
BK26-28x40	28	40	52	35	22	460	33	157	110		KM7	M35x1,5	390
BK26-30x40	30	40	52	35	22	300	20	93	70		KM7	M35x1,5	240
BK26-32x45	32	45	58	42	28	420	26	98	70		KM8	M40x1,5	320
BK26-35x45	35	45	58	42	28	460	26	77	60		KM8	M40x1,5	320
BK26-40x50	40	50	65	44	28	640	32	88	70		KM9	M45x1,5	440
BK26-45x55	45	55	70	45	28	760	34	73	60		KM10	M50x1,5	550
BK26-50x60	50	60	75	46	28	930	37	72	60		KM11	M55x2	660
BK26-60x70	60	70	85	52	28	1500	50	82	70		KM13	M65x2	1050



VÝPOČET ŘEMENOVÉHO PŘEVODU

Na základě Vašich údajů Vám navrhne řemenový převod!

Podklady pro výpočet řemenového převodu:

- A ☐ Nový návrh
B ☐ Změna stávajícího převodu
C ☐ Kontrolní výpočet
- 1 ☐ Klínový řemen
2 ☐ Ozubený řemen
3 ☐ Drážkový řemen
4 ☐ Ploché řemen
5 ☐ Řetězový převod
6 ☐ Spojka

1.

Typ motoru / druh stroje
Jmenovitý výkon
Kroučící moment
Otáčky
Průměr hnací/hnané řemenice
Průměr hřídele motoru/stroje
Provozní doba
Způsob provozu
Způsob zatížení

Motor

..... kW
..... Nm
..... ot/min.
..... mm
..... mm
..... hod.

Stroj

..... kW
..... Nm
..... ot/min.
..... mm
..... mm
..... hod.

2. Převodový poměr

3. Osová vzdálenost min/max.

..... mm

..... mm

4. Okolní vlivy

a) chemikálie
c) olej, voda

b) prach
d) jiné

Provozní teplota

..... °C

5. Napínací kladka

☐ ano

☐ ne

doplňte prosím obr. s rozměry

☐ a) vnitřní

☐ b) vnější

6. Požadavky

Požadovaná životnost
Požadovaná hlučnost
Max. šířka řemenice

..... hod.

..... dB

..... mm

..... mm

7. Povrch. vrstva - transport

8. Poznámka

Požaduje

Firma

Oddělení

Kontaktní osoba

Adresa/PSČ

Tel.:

Fax.:

Více výkonu,
více jistoty
TYMA

Vyplněnou kopii zašlete prosím na adresu, fax, nebo E-mail. V případě potřeby doplňte nákresem převodu.

TYMA - prodejce technických součástí

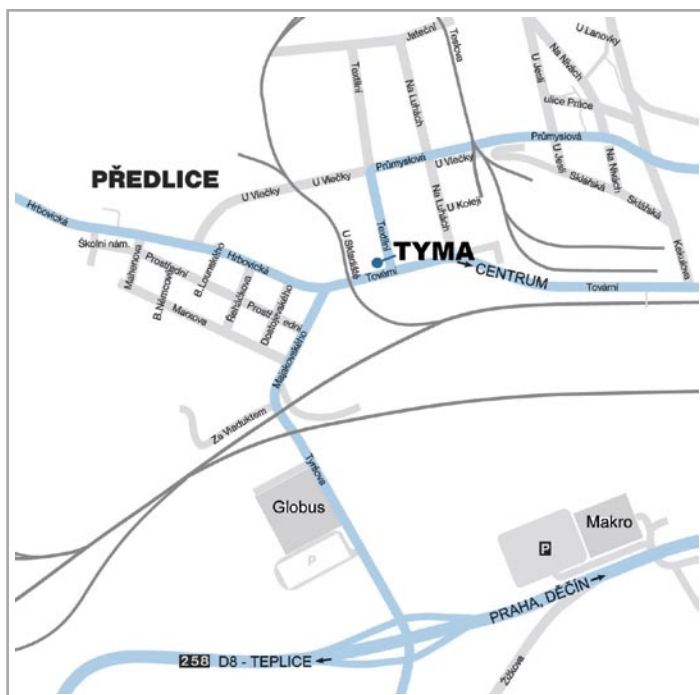
„Návrh řemenového převodu“

Textilní 1, 400 01 Ústí nad Labem

Tel.: +420 475 500 955

Fax.: +420 475 500 995

E-mail: prodej@tyma.cz



TYMA CZ, s. r. o.

Textilní 1
CZ - 400 01 Ústí nad Labem

Tel 00420 - 475 500 955
Fax 00420 - 475 500 995

E-mail info@tyma.cz
prodej@tyma.cz

Web www.tyma.cz