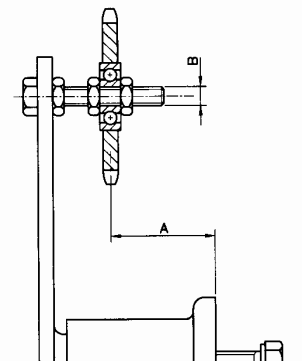


## Univerzální napínáky pro řetězy dle DIN 8187

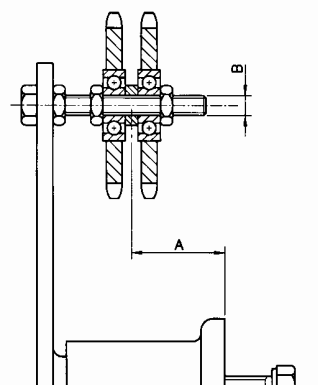
### Simplex

Type	Zähne	A	B	Gewicht kg	
TEKS 3 - 3/8 x 7/32"	15	13 - 43	M10	0,60	
TEKS 3 - 1/2 x 5/16"	15	13 - 43	M10	0,65	
TEKS 5 - 5/8 x 3/8"	15	40 - 82	M12	2,32	
TEKS 5 - 3/4 x 7/16"	15	40 - 82	M12	2,55	
TEKS 6 - 1" x 17,02	13	38 - 102	M20	5,00	
TEKS 7 - 1 1/4 x 3/4"	13	76 - 156	M20	8,55	
TEKS 7 - 1 1/2 x 1"	11	76 - 156	M20	8,90	



### Duplex

Typ	Zähne	A	B	Gewicht kg	
TEKS 3 - 3/8 x 7/32"	15	15 - 35	M10	0,65	
TEKS 4 - 1/2 x 5/16"	15	17 - 33	M10	1,15	
TEKS 5 - 5/8 x 3/8"	15	20 - 36	M12	2,55	
TEKS 5 - 3/4 x 7/16"	15	22 - 44	M12	3,00	
TEKS 6 - 1" x 17,02	13	33 - 68	M20	5,80	
TEKS 7 - 1 1/4 x 3/4"	13	35 - 84	M20	10,10	
TEKS 7 - 1 1/2 x 1"	11	41 - 78	M20	10,75	



### Triplex

Type	Zähne	A	B	Gewicht kg	
TEKS 4 - 3/8 x 7/32"	15	19 - 30	M10	0,95	
TEKS 5 - 1/2 x 5/16"	15	26 - 40	M12	2,45	
TEKS 6 - 5/8 x 3/8"	15	33 - 66	M20	4,95	
TEKS 6 - 3/4 x 7/16"	15	36 - 65	M20	5,20	
TEKS 7 - 1" x 17,02	13	48 - 71	M20	9,40	
TEKS 7 - 1 1/4 x 3/4"	13	53 - 66	M20	11,70	
TEKS 7 - 1 1/2 x 1"	11	65 - 77	M20	12,70	

