

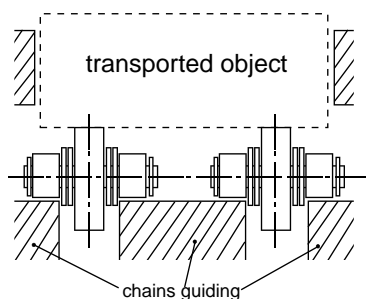
SPECIAL CHAINS

ČZ Standard

Side bow roller chains	84
Side bow roller chains with attachments M1, M2	85
Side bow roller chains with attachments K1, K2	86
Side bow roller chains with attachments K7, K8	87
Side bow roller chains with one side extended pins	88
Side bow roller chains with both side extended pins	89
Duplex-Strand roller chains with U-Type attachments	
Duplex-strand roller chains with U-Type rubber attachments	90
Triplex-Strand roller chains with U-Type attachments	
Triplex-Strand roller chains with U-Type rubber attachments	91
6-Row roller chains with U-Type attachments	
6-Row roller chains with U-Type rubber attachments	92
Conveyor chains with plastic or steel rollers - Type A	93
Conveyor chains with plastic or steel rollers - Type C	94–95
Simplex conveyor chains with side transporting rollers	96
Duplex conveyor chains with one side transporting rollers	97
Duplex conveyor chains with middle transporting rollers	98
Simplex conveyor chains with transporting rollers on the upper row with special attachments M2, M8	99
Duplex conveyor chains with transporting rollers on the upper row with special Attachments M8	100
Double pitch atypical roller chains	101
Atypical roller chains	102–103



Conveyor chains with rollers are another industrially very important group of special chains. They are used for transport of goods like pallets, cases, packets, etc.



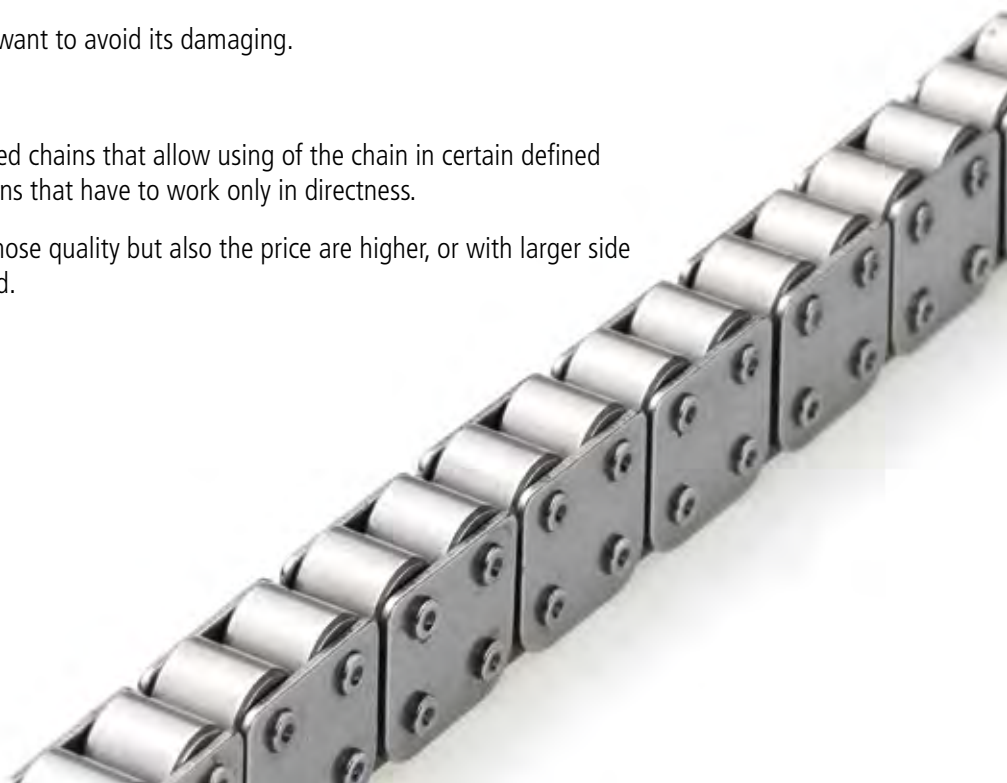
Their field of application is in furniture industry and in conveying systems because when the goods are stopped (for example in interoperation), the rollers are freely turning so that the chain could move without any friction between the goods and the chain.

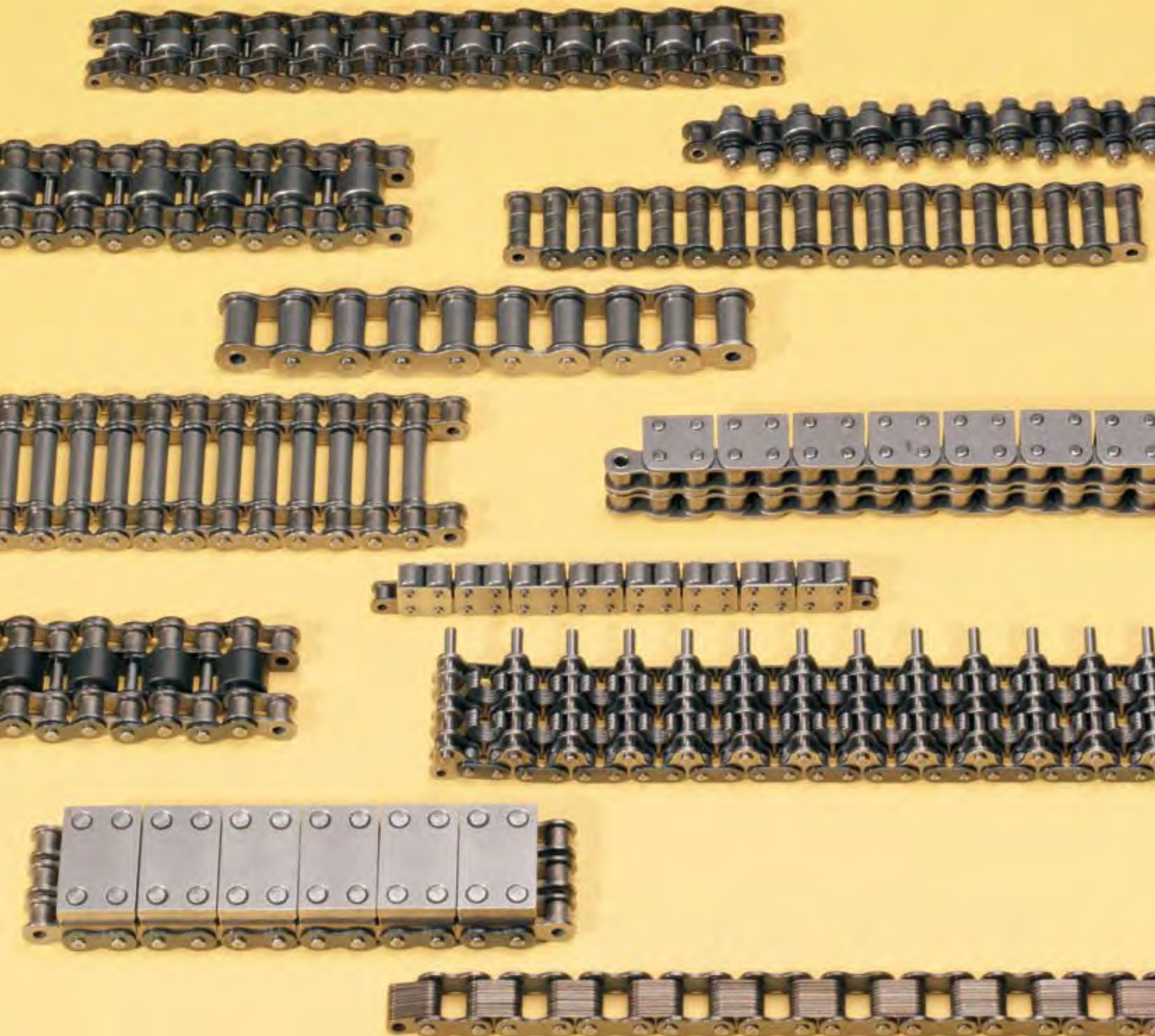
Chains with steel or rubber U-type attachments are used in lines for transport of for example wooden plates. Their advantage: the transported object is not damaged and it does not slide (at rubber attachments).

The object cannot stop on the conveyor if we want to avoid its damaging.

Side bow roller chains are specially designed chains that allow using of the chain in certain defined radius. This is not possible at all the other chains that have to work only in directness.

Chains are manufactured with shaped pins whose quality but also the price are higher, or with larger side clearance where the chain durability is lowered.





SPECIAL CONVEYOR CHAINS WITH ROLLERS

- are used for transport of goods, like pallets, cases, packets

CHAINS WITH STEEL OR RUBBER U - TYPE ATTACHMENTS

- are used for transport of fragile articles

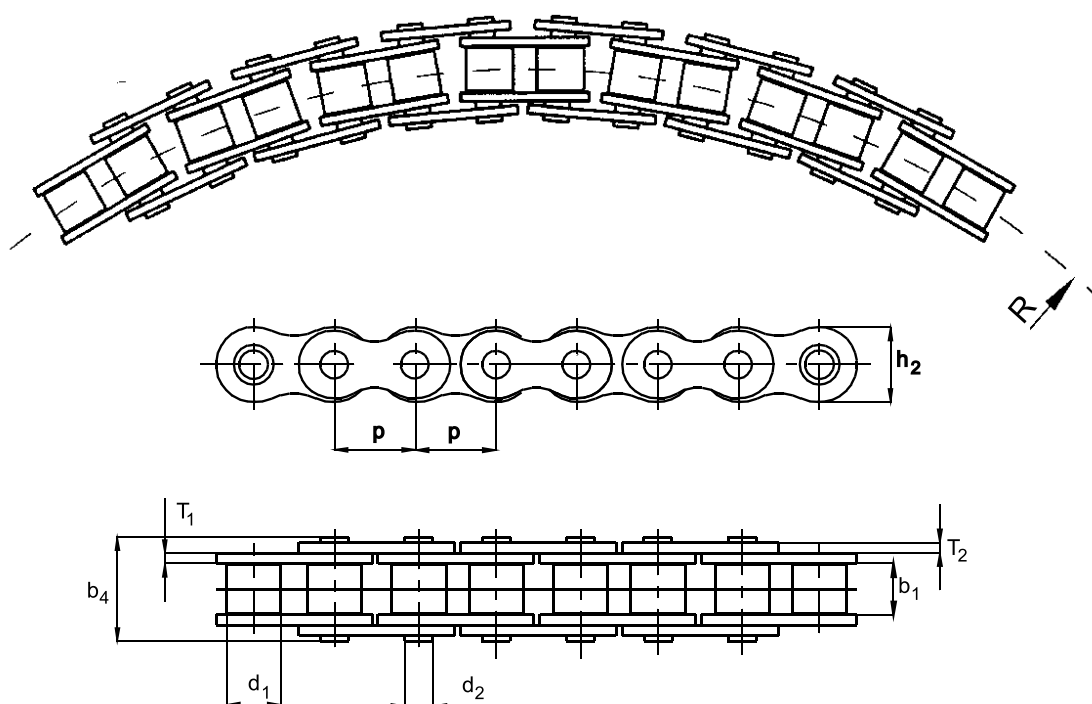
SIDEBOW CHAINS

- are used in certain defined radius

Applications: conveyors in stocks, woollen, steel, wood, building materials and food industry

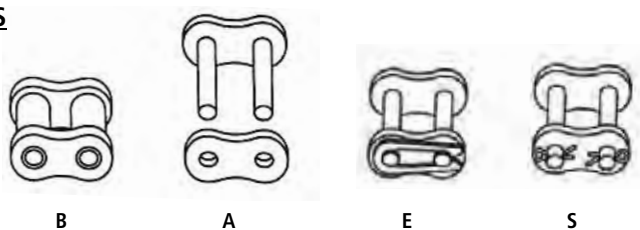
SIDE BOW ROLLER CHAINS

ČZ Standard



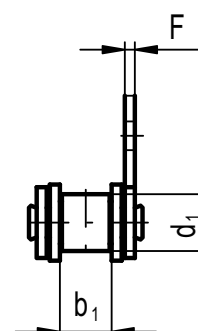
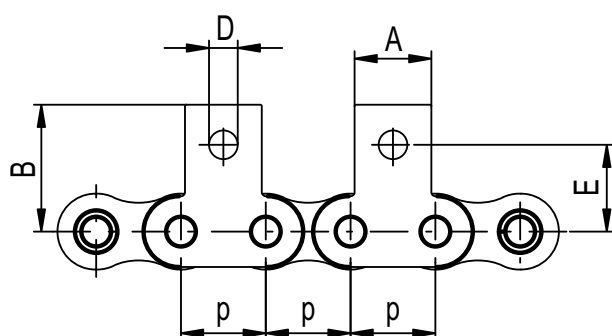
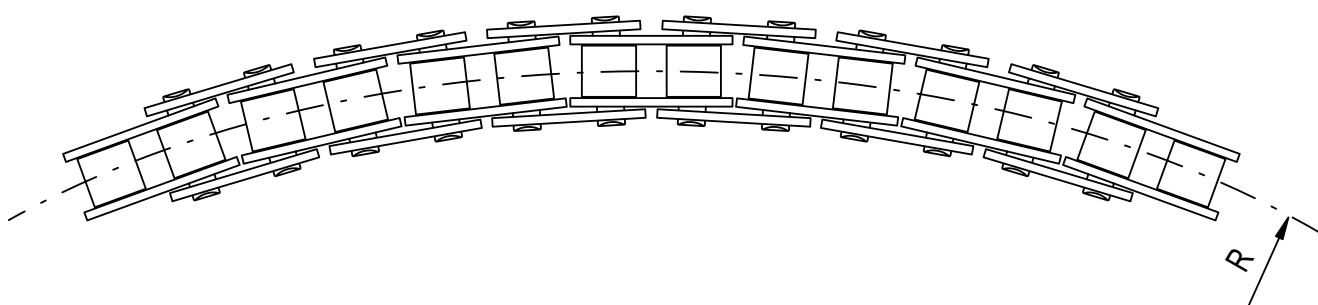
TRADE MARK ČZ	PITCH	INSIDE WIDTH	ROLLER DIAMETER	PIN DIAMETER	PIN LENGTH	INNER PLATE WIDTH	INNER PLATE THICKNESS	OUTER PLATE THICKNESS	SIDE BOW	BREAKING LOAD	CONNECTING ELEMENTS			
	p	b1 min.	d1 max.	d2 max.	b4 max.	h2 max.	T1	T2	R	FB min.	B	A	E	S
	mm	mm	mm	mm	mm	mm	mm	mm	min.	N				
08 B-1	12,7	7,75	8,51	4,45	16,80	11,80	1,60	1,40	370	18 690	•	•	•	•
10 B-1	15,875	9,65	10,16	5,08	19,30	14,50	1,60	1,60	500	23 310	•	•	•	•
12 B-1	19,05	11,68	12,07	5,72	22,30	16,10	1,80	1,80	650	30 345	•	•	•	•

CONNECTING ELEMENTS

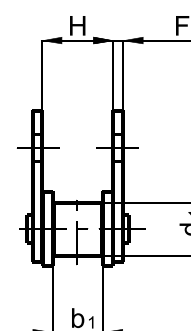


SIDE BOW ROLLER CHAINS WITH ATTACHMENTS M1, M2

ČZ Standard



TYPE M1



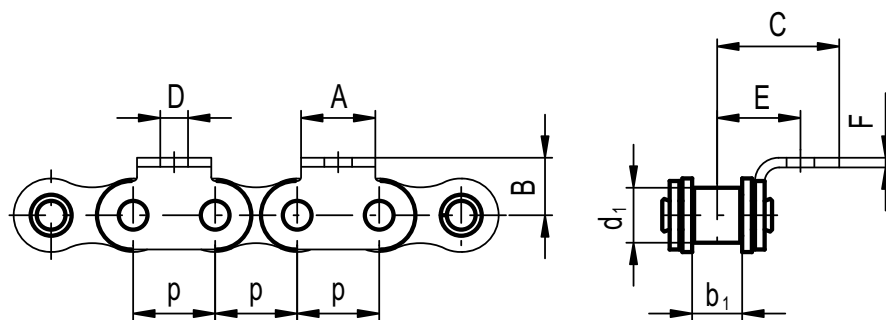
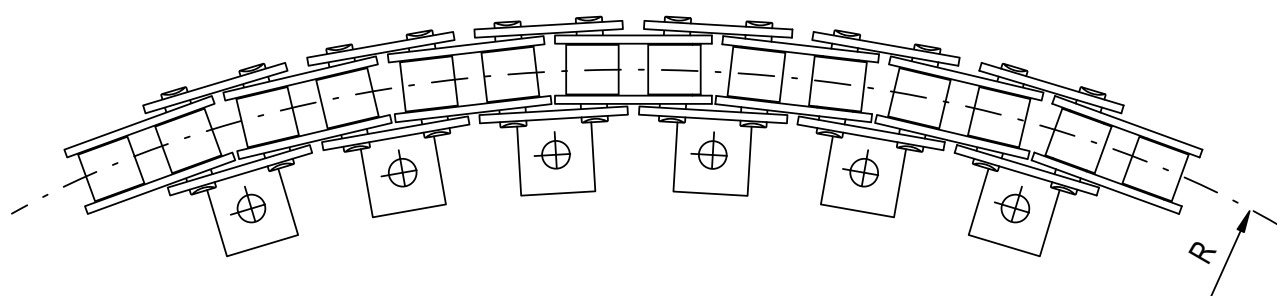
TYPE M2
R2

TRADE MARK ČZ	PITCH	INSIDE WIDTH	ROLLER DIAMETER	DIMENSION	DIMENSION	ATTACHMENT HOLE DIAMETER	DIMENSION	DIMENSION	ATTACHMENT PLATE THICKNESS	SIDE BOW	BREAKING LOAD
	p	b1 min.	d1 max.	A	B	D	E	H	F	R min.	FB min.
	mm	mm	mm	mm	mm	mm	mm	mm	mm	mm	N
08 B-1M1	12,7	7,75	8,51	11,50	19,00	4,30	13,00	-	1,40	400	18 690
08 B-1M2	12,7	7,75	8,51	11,50	19,00	4,30	13,00	11,90	1,40	400	18 690

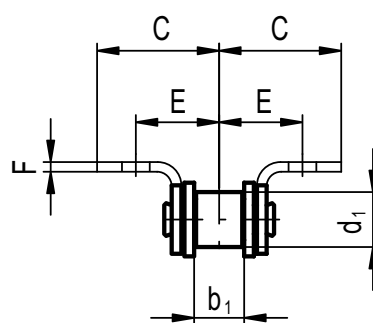
Position of the attachments M1, M2 must be consulted with producer

SIDE BOW ROLLER CHAINS WITH ATTACHMENTS K1, K2

ČZ Standard



TYPE K1



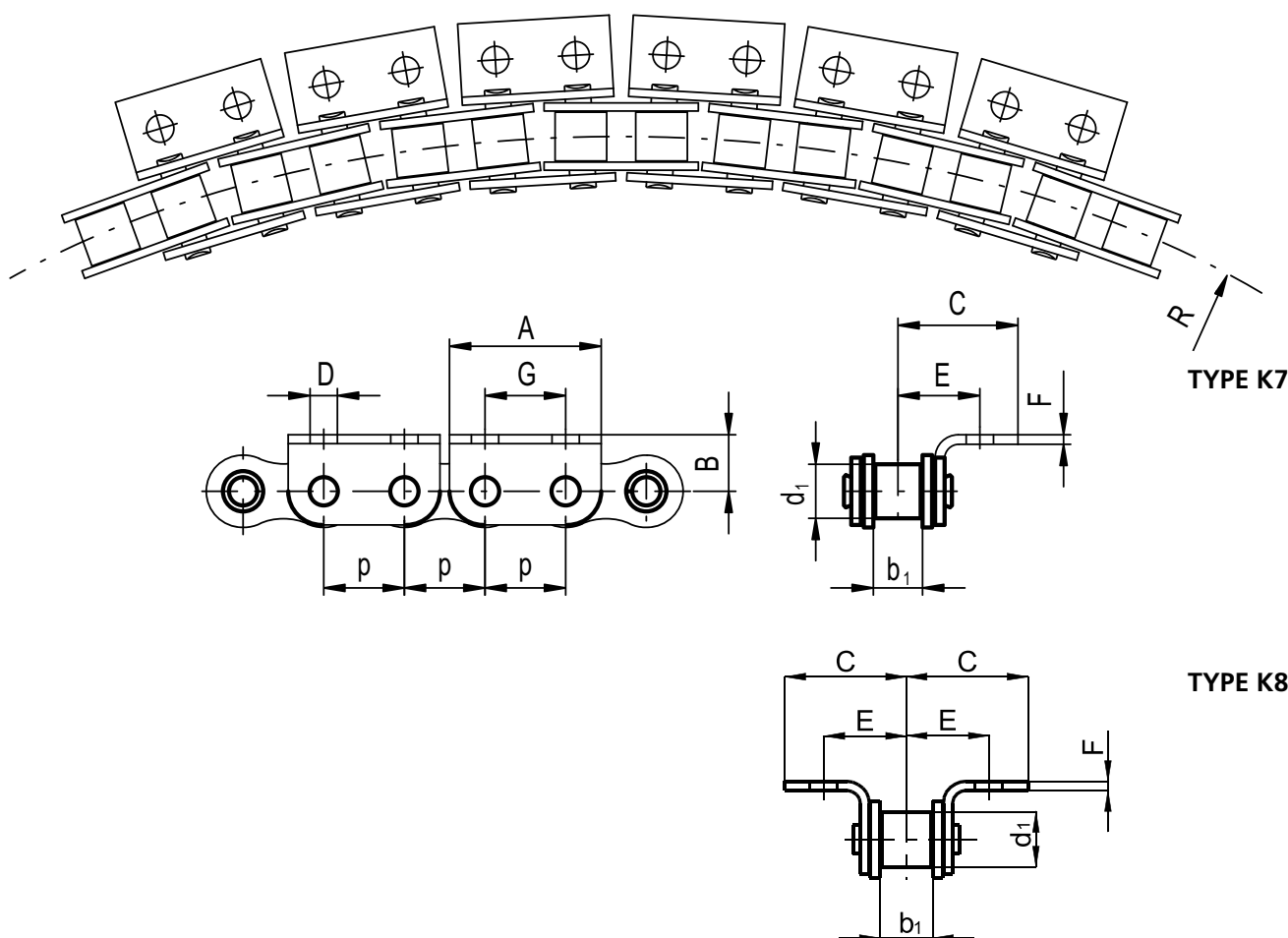
TYPE K2

TRADE MARK ČZ	PITCH	INSIDE WIDTH	ROLLER DIAMETER	DIMENSION	DIMENSION	ATTACHMENT HOLE DIAMETER	DIMENSION	DIMENSION	ATTACHMENT PLATE THICKNESS	SIDE BOW	BREAKING LOAD
	p	b ₁ min.	d ₁ max.	A	B	D	E	C	F	R min.	FB min.
	mm	mm	mm	mm	mm	mm	mm	mm	mm	mm	N
08 B-1 K1	12,7	7,75	8,51	11,50	8,90	4,30	12,90	18,90	1,40	400	18 690
10 B-1 K1	15,875	9,65	10,16	14,00	10,30	5,30	16,20	24,20	1,60	500	23 310
10 B-1 K2	15,875	9,65	10,16	14,00	10,30	5,30	16,20	24,20	1,60	500	23 310

Position of the attachments K1, K2 must be consulted with producer

SIDE BOW ROLLER CHAINS WITH ATTACHMENTS K7, K8

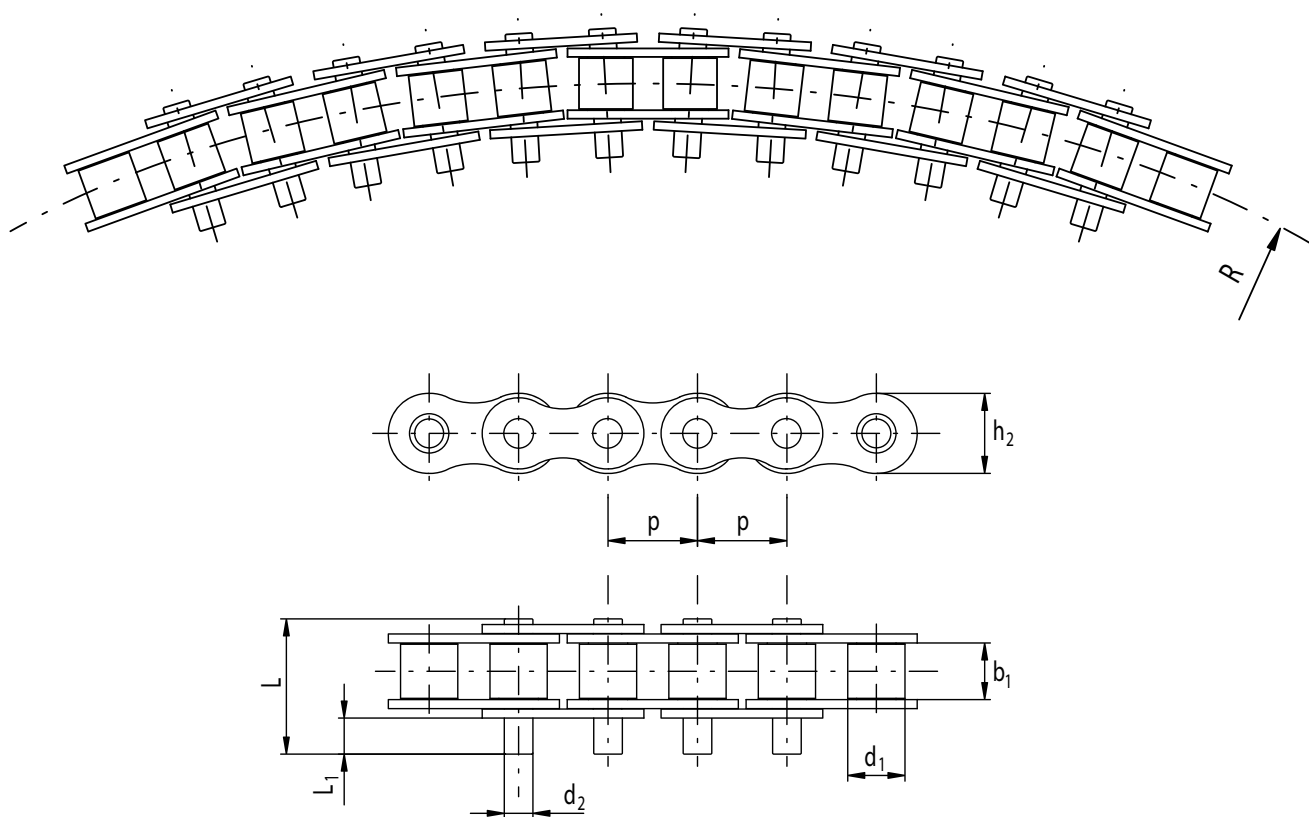
ČZ Standard



TRADE MARK ČZ	PITCH	INSIDE WIDTH	ROLLER DIAMETER	DIMENSION	DIMENSION	ATTACHMENT HOLE DIAMETER	DIMENSION	DIMENSION	DIMENSION	ATTACHMENT PLATE THICKNESS	SIDE BOW	BREAKING LOAD
	p	b1 min.	d1 max.	A	B	D	E	C	G	F	R min.	FB min.
	mm	mm	mm	mm	mm	mm	mm	mm	mm	mm	mm	N
08 B-1 K7	12,7	7,75	8,50	24,00	8,90	4,30	12,90	18,90	12,70	1,50	400	18 690
10 B-1 K8	15,875	9,65	10,16	28,70	10,30	5,30	16,30	24,30	15,88	1,50	500	23 310

SIDE BOW ROLLER CHAINS WITH ONE SIDE EXTENDED PINS

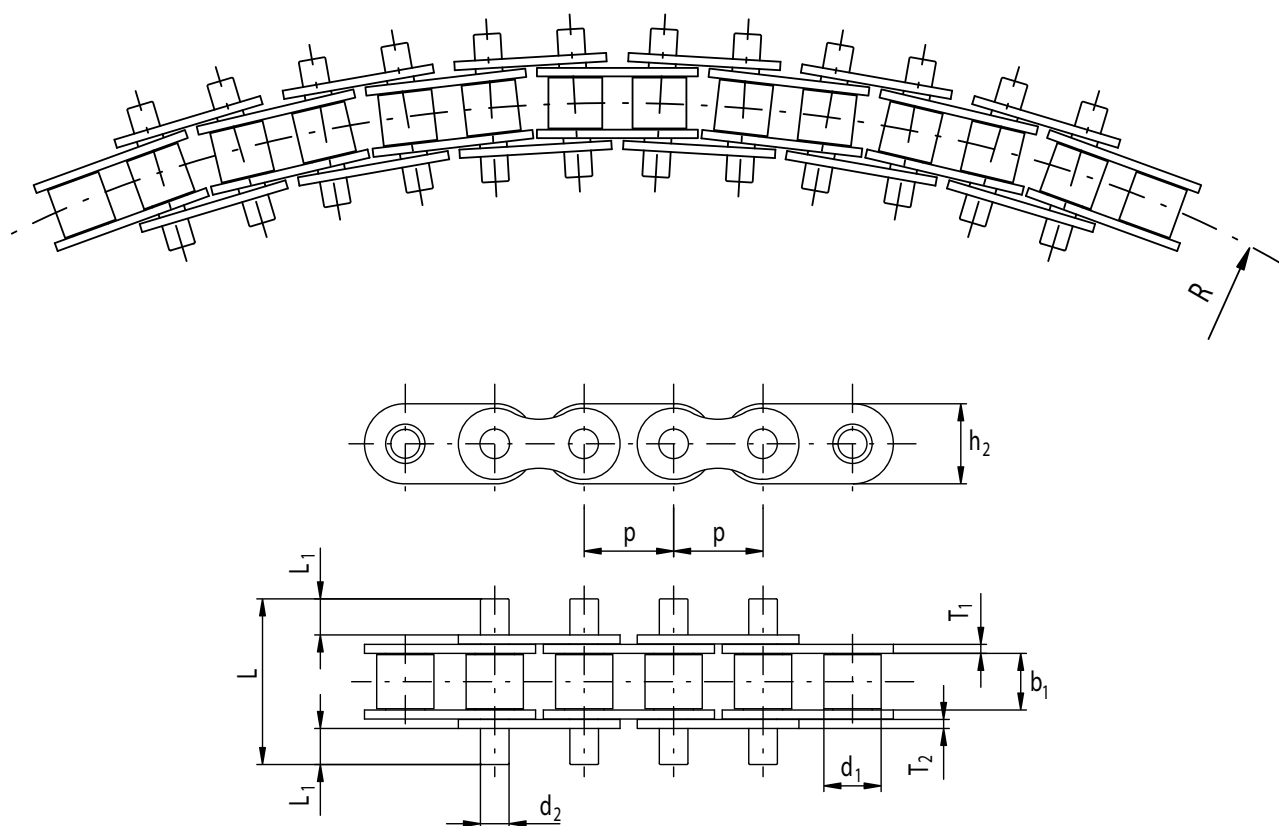
ČZ Standard



TRADE MARK ČZ	PITCH	INSIDE WIDTH	ROLLER DIAMETER	PIN DIAMETER	PIN LENGTH	PIN EXTENSION	INNER PLATE WIDTH	SIDE BOW	BREAKING LOAD
	p	b1 min.	d1 max.	d2 max.	L max.	L1 max.	h2 max.	R min.	FB min.
	mm	mm	mm	mm	mm	mm	mm	mm	N
08 B-1	12,7	7,75	8,51	4,45	21,20	5,40	11,60	370	18 690

SIDE BOW ROLLER CHAINS WITH BOTH SIDE EXTENDED PINS

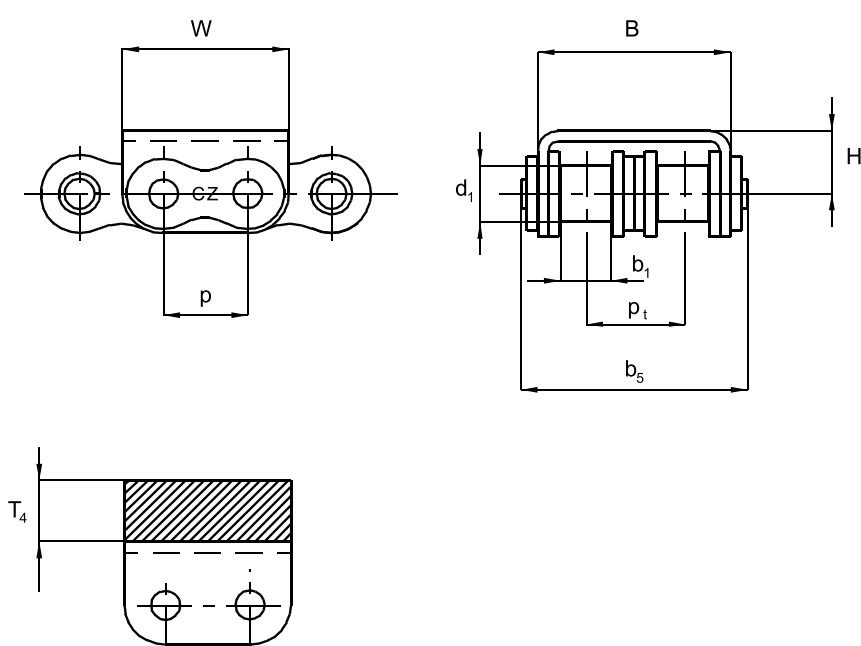
ČZ Standard



TRADE MARK ČZ	PITCH	INSIDE WIDTH	ROLLER DIAMETER	PIN DIAMETER	PIN LENGTH	PIN EXTENSION	INNER PLATE WIDTH	INNER PLATE THICKNESS	OUTER PLATE THICKNESS	SIDE BOW	BREAKING LOAD
	p	b1 min.	d1 max.	d2 max.	L max.	L1 max.	h2 max.	T1	T2	R min.	FB min.
	mm	mm	mm	mm	mm	mm	mm	mm	mm	mm	N
ASA 63	19,05	12,70	11,91	5,08	29,10	3,20	16,40	2,40	2,00	365	27 200

DUPLEX ROLLER CHAINS WITH U-TYPE ATTACHMENTS DUPLEX ROLLER CHAINS WITH U-TYPE RUBBER ATTACHMENTS

ČZ Standard

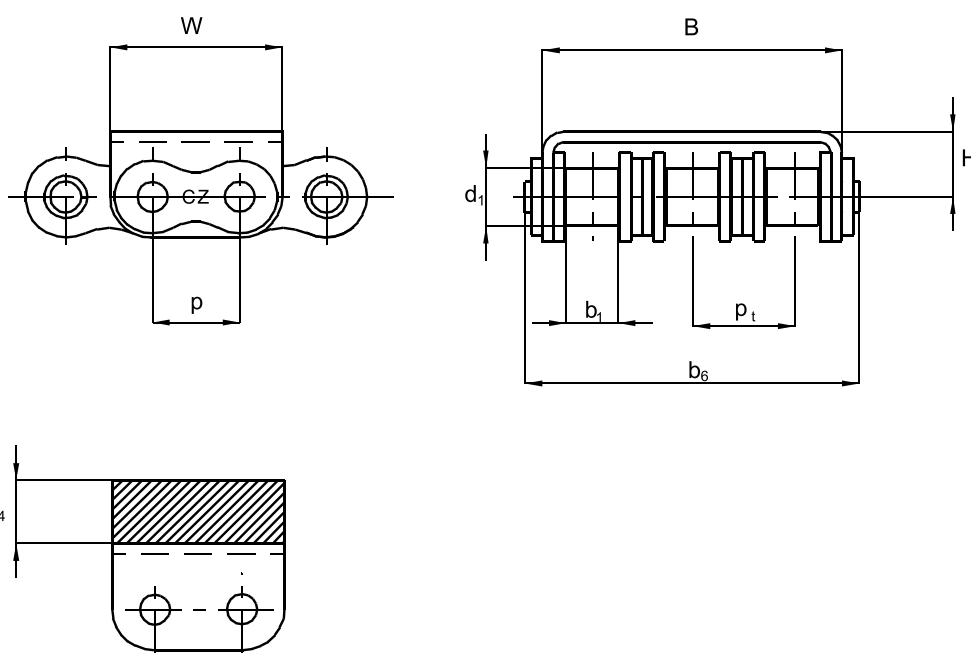


TRADE MARK ČZ	PITCH	INSIDE WIDTH	ROLLER DIAMETER	PIN LENGTH	PROFILE HEIGHT	PROFILE WIDTH	PROFILE LENGTH	PLASTIC BLOCK THICKNESS	TRANSVER. PITCH	BREAKING LOAD	CONNECTING ELEMENTS	
	p	b1 min.	d1 max.	b5 max.	H	B	W	T4	pt	FB min.	SPECIAL OUTER LINK	SPECIAL CONNECTING LINK WITH SAFETY CLIP
	mm	mm	mm	mm	mm	mm	mm	mm	mm	N		
08 B-2	12,7	7,75	8,51	33,60	8,90	27,60	24,30	-	13,92	32 655	•	•
12 B-2	19,05	11,68	12,07	45,50	13,45	39,00	35,00	-	19,46	60 690	•	•
12 B-2	19,05	11,68	12,07	45,50	13,45	39,00	35,00	13,50	19,46	60 690	•	•

Plastic type, mechanical properties and other possible requests must be consulted with producer
The U-Type attachment can be positioned on any other chain link - must be consulted with producer

TRIPLEX ROLLER CHAINS WITH U-TYPE ATTACHMENTS TRIPLEX ROLLER CHAINS WITH U-TYPE RUBBER ATTACHMENTS

ČZ Standard

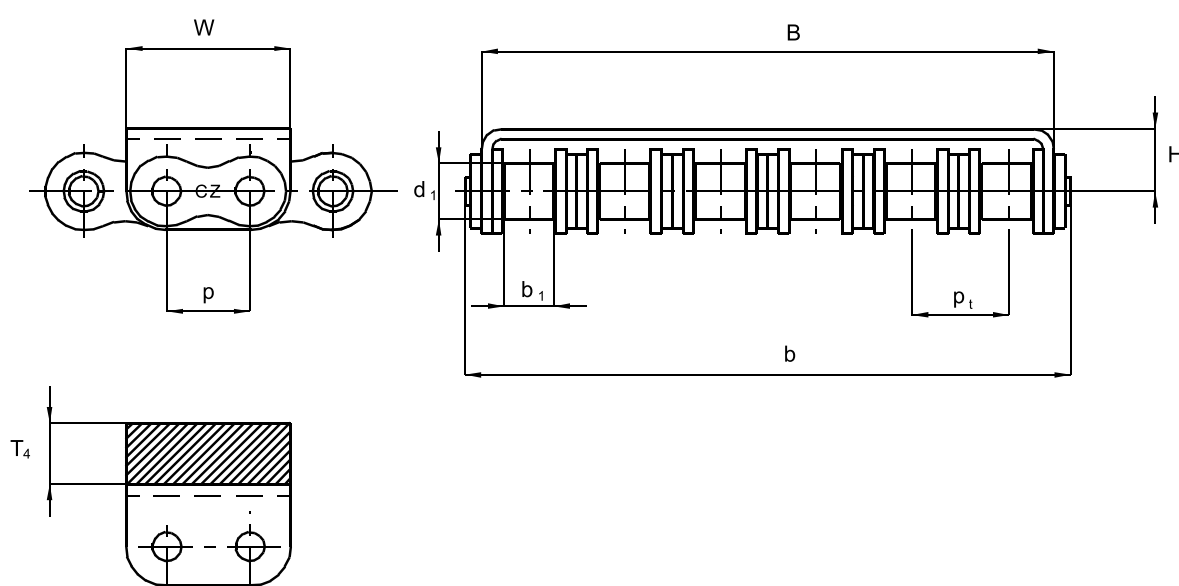


TRADE MARK ČZ	PITCH	INSIDE WIDTH	ROLLER DIAMETER	PIN LENGTH	PROFILE HEIGHT	PROFILE WIDTH	PROFILE LENGTH	PLASTIC BLOCK THICKNESS	TRANSVER. PITCH	BREAKING LOAD	CONNECTING ELEMENTS	
	p	b1 min.	d1 max.	b6 max.	H	B	W	T4	pt	FB min.	SPECIAL OUTER LINK	SPECIAL CONNECTING LINK WITH SAFETY CLIP
	mm	mm	mm	mm	mm	mm	mm	mm	mm	N		
08 B-3	12,7	7,75	8,51	48,60	10,00	43,40	24,20	-	13,92	46 725	•	•
08 B-3	12,7	7,75	8,51	48,60	10,00	43,40	24,20	5,50	13,92	46 725	•	•

Plastic type, mechanical properties and other possible requests must be consulted with producer
The U-Type attachment can be positioned on any other chain link - must be consulted with producer

6-ROW ROLLER CHAINS WITH U-TYPE ATTACHMENTS 6-ROW ROLLER CHAINS WITH U-TYPE RUBBER ATTACHMENTS

ČZ Standard

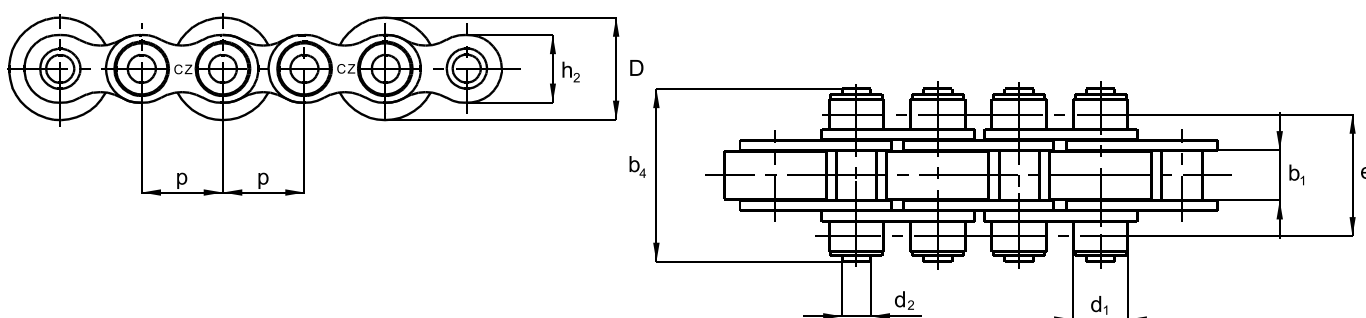


TRADE MARK ČZ	PITCH	INSIDE WIDTH	ROLLER DIAMETER	PIN LENGTH	PROFILE HEIGHT	PROFILE WIDTH	PROFILE LENGTH	PLASTIC BLOCK THICKNESS	TRANSVER. PITCH	BREAKING LOAD	CONNECTING ELEMENTS	
	p	b1 min.	d1 max.	b max.	H	B	W	T4	pt	FB min.	SPECIAL OUTER LINK	SPECIAL CONNECTING LINK WITH SAFETY CLIP
	mm	mm	mm	mm	mm	mm	mm	mm	mm	N		
08 B-6	12,7	7,75	8,51	89,40	12,70	84,00	24,30	-	13,92	112 000	•	•
08 B-6	12,7	7,75	8,51	89,40	12,70	84,00	24,30	2,80	13,92	112 000	•	•

Plastic type, mechanical properties and other possible requests must be consulted with producer
The U-Type attachment can be positioned on any other chain link - must be consulted with producer

CONVEYOR CHAINS WITH PLASTIC OR STEEL ROLLERS

Type A



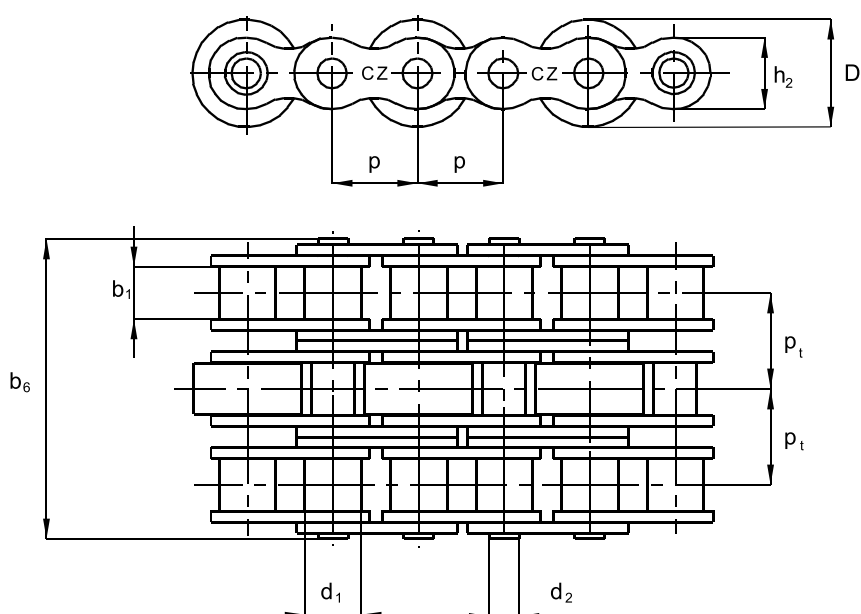
TRADE MARK ČZ	PITCH	INSIDE WIDTH	ROLLER DIAMETER	PIN DIAMETER	PIN LENGTH	INNER PLATE WIDTH	AXIS DISTANCE	CONVEYOR ROLLER DIAMETER	CONVEYOR ROLLER MATERIAL	BREAKING LOAD	CONNECTING ELEMENTS	
	p	b1 min.	d1 max.	d2 max.	b4 max.	h2 max.	e	D		FB min.	SPECIAL OUTER LINK	SPEC. CON. LINK WITH SAFETY RINGS
	mm	mm	mm	mm	mm	mm	mm	mm		N		
08 B	12,7	7,75	8,51	4,45	27,00	11,80	19,50	16,00	steel	18 690	•	•
08 B	12,7	7,75	8,51	4,45	27,00	11,80	19,50	16,00	plastic	18 690	•	•
08 B	12,7	7,75	8,51	4,45	27,00	11,80	19,50	18,00	steel	18 690	•	•
08 B	12,7	7,75	8,51	4,45	27,00	11,80	19,50	18,00	plastic	18 690	•	•
12 B	19,05	11,68	11,80	5,72	41,75	16,10	27,90	24,00	steel	30 345	•	•
12 B	19,05	11,68	11,80	5,72	41,75	16,10	27,90	24,00	plastic	30 345	•	•
12 B	19,05	11,68	11,80	5,72	41,75	16,10	27,90	26,00	steel	30 345	•	•
12 B	19,05	11,68	11,80	5,72	41,75	16,10	27,90	28,00	steel	30 345	•	•
12 B	19,05	11,68	11,80	5,72	41,75	16,10	27,90	28,00	plastic	30 345	•	•
12 B	19,05	11,68	12,07	5,72	42,25	16,10	28,10	24,00	steel	30 345	•	•
12 B	19,05	11,68	12,07	5,72	42,25	16,10	28,10	24,00	plastic	30 345	•	•
12 B	19,05	11,68	12,07	5,72	42,25	16,10	28,10	26,00	steel	30 345	•	•
12 B	19,05	11,68	12,07	5,72	42,25	16,10	28,10	28,00	steel	30 345	•	•
12 B	19,05	11,68	12,07	5,72	42,25	16,10	28,10	28,00	plastic	30 345	•	•
12 B	19,05	11,68	12,07	5,72	44,30	16,10	29,10	24,00	steel	30 345	•	•
12 B	19,05	11,68	12,07	5,72	44,30	16,10	29,10	24,00	plastic	30 345	•	•
12 B	19,05	11,68	12,07	5,72	44,30	16,10	29,10	26,00	steel	30 345	•	•
12 B	19,05	11,68	12,07	5,72	44,30	16,10	29,10	28,00	steel	30 345	•	•
12 B	19,05	11,68	12,07	5,72	44,30	16,10	29,10	28,00	plastic	30 345	•	•

Plastic type, must be consulted with producer

Special requests concerning the roller position in the chain can be consulted with producer

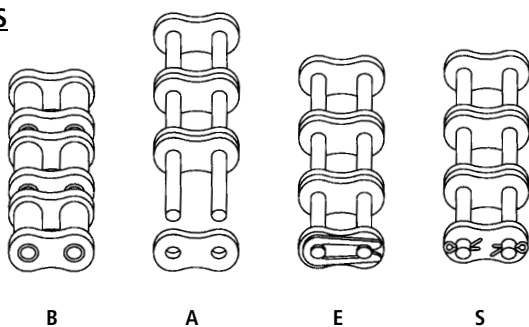
CONVEYOR CHAINS WITH PLASTIC OR STEEL ROLLERS

Type C



TRADE MARK ČZ	PITCH	INSIDE WIDTH	ROLLER DIAMETER	PIN DIAMETER	PIN LENGTH	INNER PLATE WIDTH	TRANSVER. PITCH	CONVEYOR ROLLER DIAMETER	CONVEYOR ROLLER MATERIAL	BREAKING LOAD	CONNECTING ELEMENTS			
	p	b1 min.	d1 max.	d2 max.	b6 max.	h2 max.	Pt	D		FB min.	B	A	E	S
	mm	mm	mm	mm	mm	mm	mm	mm		N				
06 B-3+	9,525	5,72	6,35	3,28	32,90	8,20	10,24	14,00	steel	26 145	•	•	•	
06 B-3+	9,525	5,72	6,35	3,28	32,90	8,20	10,24	14,00	plastic	26 145	•	•	•	•
10 B-3	15,875	9,65	10,16	5,08	51,90	14,50	16,59	20,00	steel	70 035	•	•	•	•

CONNECTING ELEMENTS



B

A

E

S

CONVEYOR CHAINS WITH PLASTIC OR STEEL ROLLERS

Type C

TRADE MARK ČZ	PITCH	INSIDE WIDTH	ROLLER DIAMETER	PIN DIAMETER	PIN LENGTH	INNER PLATE WIDTH	TRANSVER. PITCH	CONVEYOR ROLLER DIAMETER	CONVEYOR ROLLER MATERIAL	BREAKING LOAD	CONNECTING ELEMENTS			
	p	b1 min.	d1 max.	d2 max.	b6 max.	h2 max.	Pt	D		FB min.	B	A	E	S
	mm	mm	mm	mm	mm	mm	mm	mm		N				
10 B-3	15,875	9,65	10,16	5,08	51,90	14,50	16,59	20,00	plastic	70 035	•	•	•	•
10 B-3	15,875	9,65	10,16	5,08	51,90	14,50	16,59	18,00	steel	70 035	•	•	•	•
10 B-3	15,875	9,65	10,16	5,08	51,90	14,50	16,59	18,00	plastic	70 035	•	•	•	•
12 B-3	19,05	11,68	12,07	5,72	61,25	16,10	19,46	24,00	steel	91 035	•	•	•	•
12 B-3	19,05	11,68	12,07	5,72	61,25	16,10	19,46	24,00	Cast: PE-UHM PA 6.6 Vestamid L-R7-MHI PA 12	91 035	•	•	•	•
12 B-3	19,05	11,68	12,07	5,72	61,25	16,10	19,46	26,00	steel	91 035	•	•	•	•
12 B-3	19,05	11,68	12,07	5,72	61,25	16,10	19,46	28,00	steel	91 035	•	•	•	•
12 B-3	19,05	11,68	12,07	5,72	61,25	16,10	19,46	28,00	Cast: PE-UHM PA 6.6 Vestamid L-R7-MHI PA 12	91 035	•	•	•	•
16 B-3	25,4	17,02	15,88	8,28	99,10	21,00	31,88	38,50	steel	195 000	•	•	•	•
16 B-3	25,4	17,02	15,88	8,28	99,10	21,00	31,88	38,50	Cast: PE-UHM PA 6.6 Vestamid L-R7-MHI PA 12	195 000	•	•	•	•

+ONLY WITH ONE MEDDLE PLATE

Plastic type must be consulted with producer

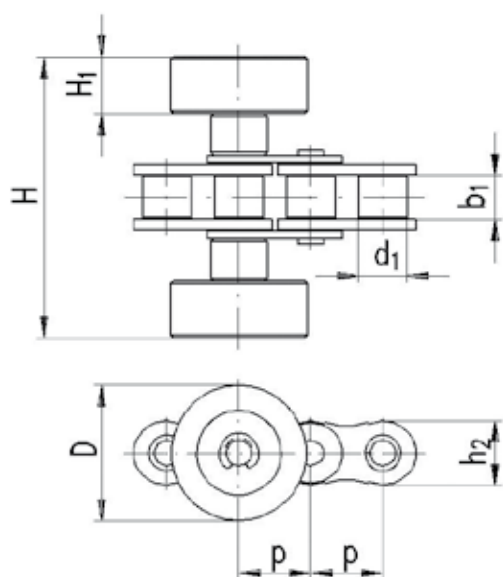
Inner links with conveyor rollers are mostly in the middle row of the triplex chain. In case of customer request they can be positioned on the side chain rows - must be consulted with producer

Special request concerning the rollers position in the chain must be consulted with producer

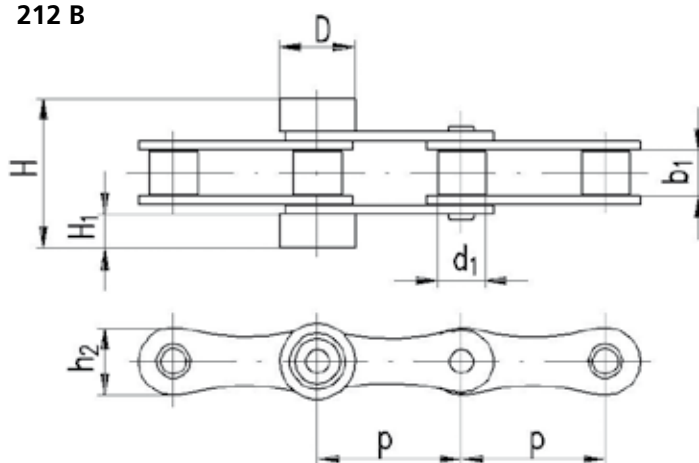
SIMPLEX CONVEYOR CHAINS WITH SIDE TRANSPORTING ROLLERS

ČZ Standard

08 B



212 B



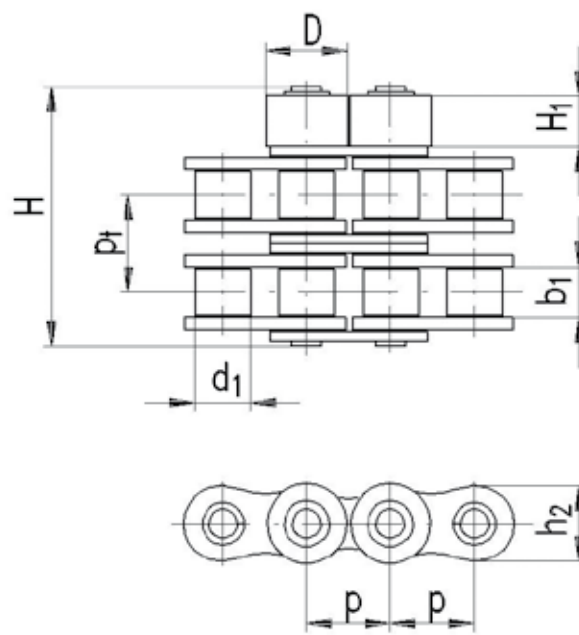
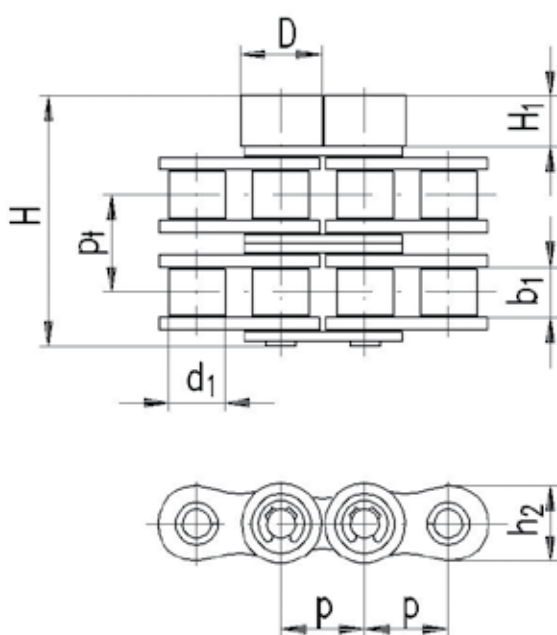
TRADE MARK ČZ	PITCH	INSIDE WIDTH	ROLLER DIAMETER	DIMENSION	INNER PLATE WIDTH	CONVEYOR ROLLER DIAMETER	CONVEYOR ROLLER HEIGHT	CONVEYOR ROLLER MATERIAL	BREAKING LOAD
	p	b1 min.	d1 max.	H	h2 max.	D	H1		FB min.
	mm	mm	mm	mm	mm	mm	mm		N
08 B	12,7	7,75	8,51	49,00	11,60	24,00	10,00	plastic	18 690
212 B	38,1	11,68	12,07	40,00	16,40	20,00	9,00	plastic	30 345

Transporting roller material must be consulted with producer
Transporting roller position in the chain must be consulted with producer

The chain closing with disconnecting elements is possible only if the transporting rollers are not on every outer link. In opposite case is possible to close the chain only by special outer link - riveting connection

DUPLEX CONVEYOR CHAINS WITH ONE SIDE TRANSPORTING ROLLERS

ČZ Standard

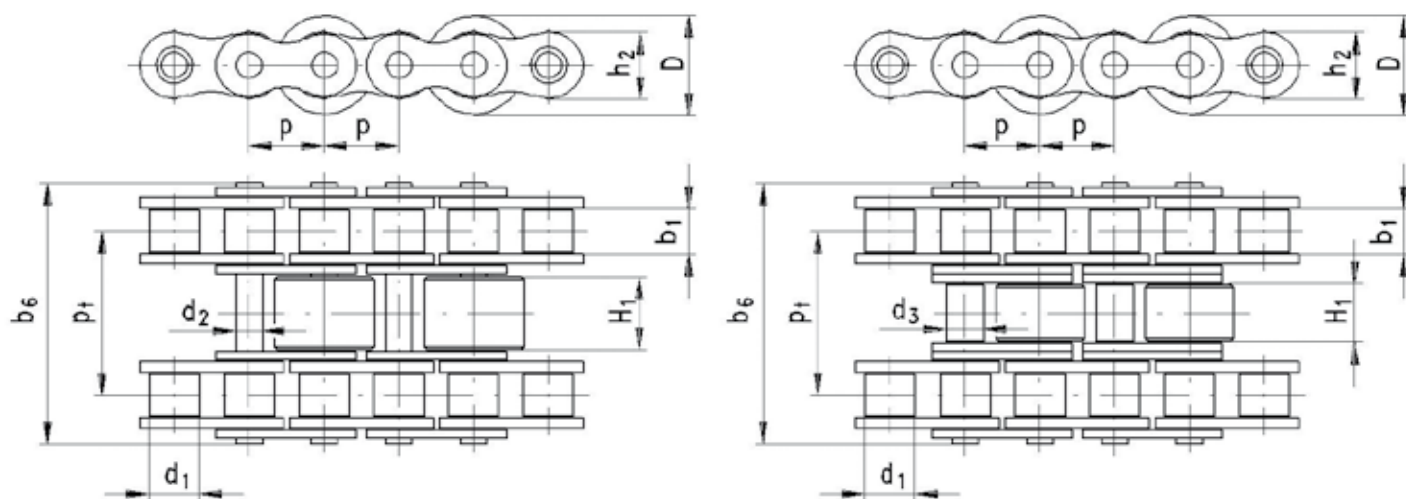


TRADE MARK ČZ	PITCH	INSIDE WIDTH	ROLLER DIAMETER	DIMENSION	INNER PLATE WIDTH	CONVEYOR ROLLER DIAMETER	CONVEYOR ROLLER HEIGHT	TRANSVER. PITCH	CONVEYOR ROLLER MATERIAL	BREAKING LOAD	CONNECTING ELEMENTS	
	p	b1 min.	d1 max.	H	h2 max.	D	H1	pt		FB min.	SPECIAL OUTER LINK	SPEC. CON. LINK WITH SAFETY SPRIG
	mm	mm	mm	mm	mm	mm	mm	mm		N		
08 B-2	12,70	7,75	8,51	37,20	12,00	12,30	7,60	13,92	steel	32 655	•	•
12 B-2	19,05	11,68	12,07	55,00	16,40	18,00	11,60	19,46	steel	60 690	•	

It is necessary to consult with producer in case the transporting roller should not be on every pin

DUPLEX CONVEYOR CHAINS WITH MIDDLE TRANSPORTING ROLLERS

ČZ Standard



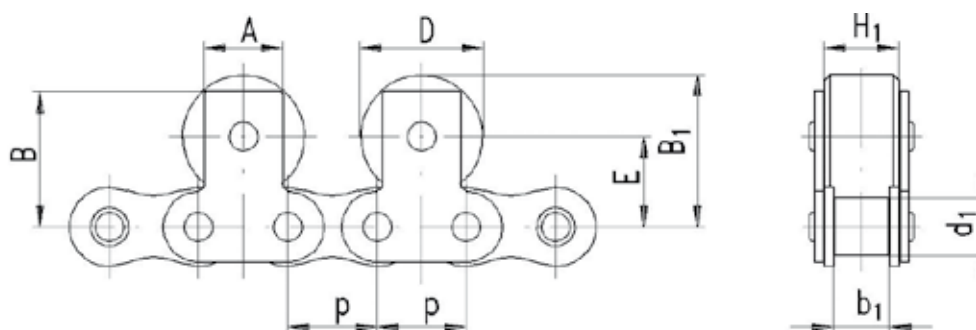
TRADE MARK ČZ	PITCH	INSIDE WIDTH	ROLLER DIAMETER	PIN DIAMETER	BUSH DIAMETER	DIMENSION	INNER PLATE WIDTH	CONVEYOR ROLLER DIAMETER	CONVEYOR ROLLER HEIGHT	TRANSVER. PITCH	CONVEYOR ROLLER MATERIAL	BREAKING LOAD	MODIFICATION	CONNECTING ELEMENTS	
	p	b1 min.	d1 max.	d2 max.	d3	b6	h2 max.	D	H1	pt		FB min.		SPECIAL OUTER LINK	SPEC. CON. LINK WITH SAFETY SPRIG
	mm	mm	mm	mm	mm	mm	mm	mm	mm	mm		N			
06 B	9,525	5,72	6,35	3,28	-	32,90	8,10	14,00	8,50	20,48	steel	17 745	"A"	•	•
08 B	12,7	7,75	8,51	4,45	-	44,25	11,60	17,00	12,50	27,84	steel	32 655	"A"	•	•
08 B	12,7	7,75	8,51	4,45	-	44,25	11,60	17,00	12,50	27,84	plastic	32 655	"A"	•	•
12 B	19,05	11,68	12,07	5,72	-	61,25	16,40	28,00	18,80	38,92	steel	60 690	"A"	•	•
12 B	19,05	11,68	12,07	-	8,00	61,25	16,40	28,00	15,60	38,92	steel	91 035	"B"	•	•

Material and position of transporting roller must be consulted with producer

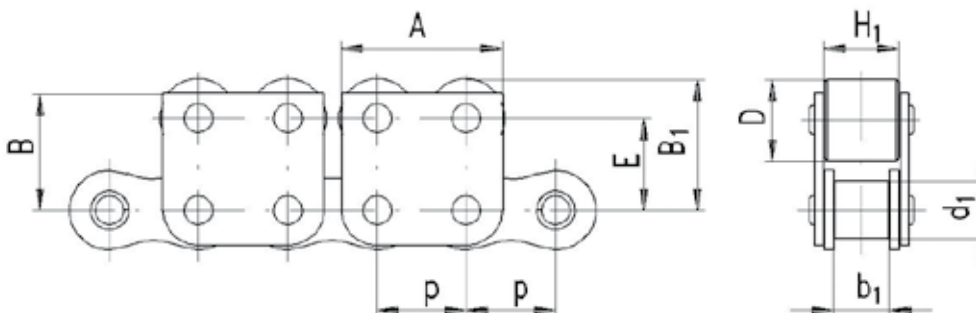
SIMPLEX CONVEYOR CHAINS WITH TRANSPORTING ROLLERS ON THE UPPER ROW WITH SPECIAL ATTACHMENTS M2, M8

ČZ Standard

TYPE M2



TYPE M8

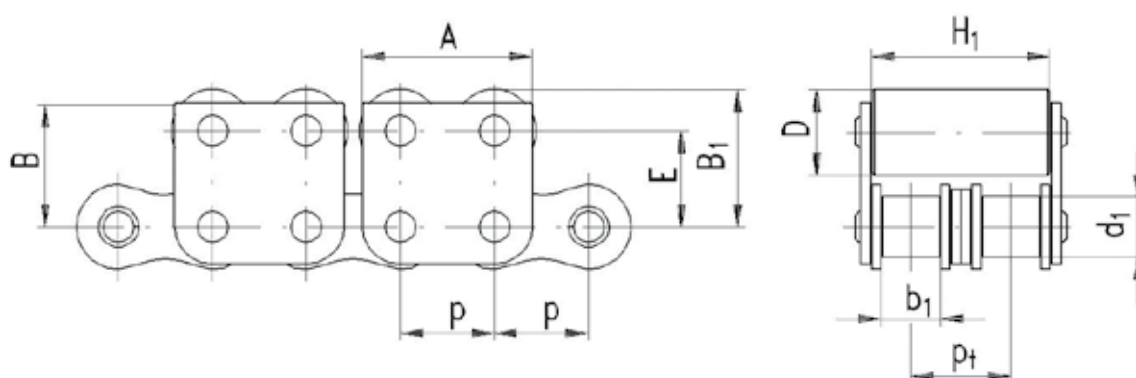


TRADE MARK ČZ	PITCH	INSIDE WIDTH	ROLLER DIAMETER	DIMENSION	DIMENSION	DIMENSION	CONVEYOR ROLLER DIAMETER	DIMENSION	CONVEYOR ROLLER HEIGHT	CONVEYOR ROLLER MATERIAL	BREAKING LOAD	ATTACHMENT TYPE	CONNECTING ELEMENTS		
	p	b1 min.	d1 max.	A	B	B1	D	E	H1 max.		FB min.		SPECIAL OUTER LINK	SPECIAL CONNECTING LINK WITH 2 SAFETY SPRINGS	Special con. link with safety spring and cotter
	mm	mm	mm	mm	mm	mm	mm	mm	mm		N				
06 B	9,525	5,72	6,35	17,80	12,30	13,60	9,00	9,10	8,50	steel	9 345	M2	•		•
10 B	15,875	9,65	10,16	14,00	24,00	27,70	22,00	16,70	13,20	steel	23 310	M2	•		•
10 B	15,875	9,65	13,25	28,70	20,85	23,25	14,00	16,25	13,25	steel	23 310	M8	•	•	

Transporting roller position with attachments type M2 or M8 must be consulted with producer

DUPLEX CONVEYOR CHAINS WITH TRANSPORTING ROLLERS ON THE UPPER ROW WITH SPECIAL ATTACHMENTS M8

ČZ Standard

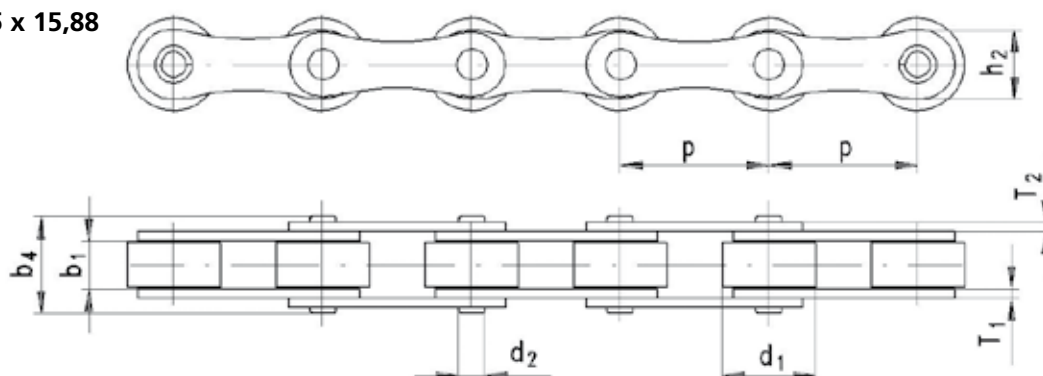


TRADE MARK ČZ	PITCH	INSIDE WIDTH	ROLLER DIAMETER	DIMENSION	DIMENSION	DIMENSION	CONVEYOR ROLLER DIAMETER	DIMENSION	CONVEYOR ROLLER HEIGHT	TRANSVER. PITCH	CONVEYOR ROLLER MATERIAL	BREAKING LOAD	CONNECTING ELEMENTS	
	p	b1 min.	d1 max.	A	B	B1	D	E	H1 max.	pt		FB min.	SPECIAL OUTER LINK	SPECIAL CONNECTING LINK WITH 2 SAFETY SPRINGS
	mm	mm	mm	mm	mm	mm	mm	mm	mm	mm		N		
08 B-2	12,7	7,75	8,51	24,00	17,40	18,90	11,80	13,00	25,20	13,92	steel	32 655	•	•

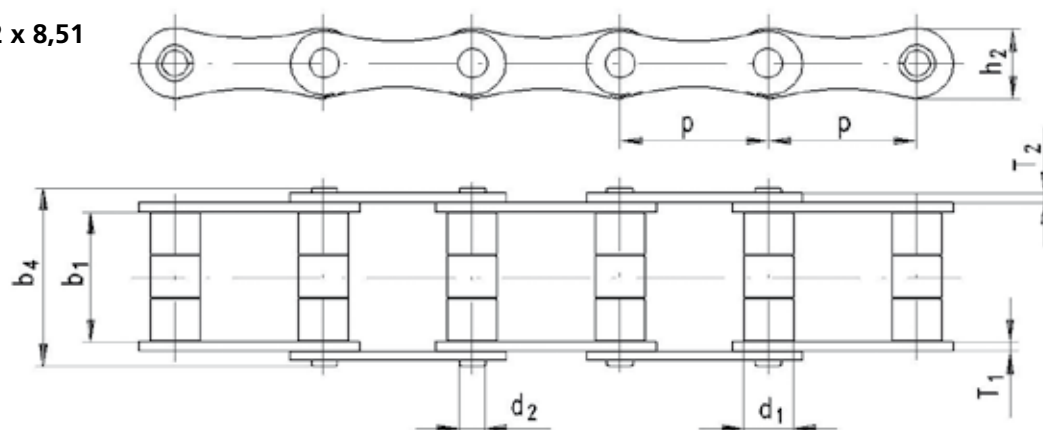
DOUBLE PITCH ATYPICAL ROLLER CHAINS

ČZ Standard

25,4 x 7,75 x 15,88

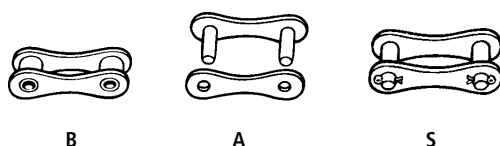


25,4 x 23,2 x 8,51



TRADE MARK ČZ	PITCH	INSIDE WIDTH	ROLLER DIAMETER	PIN DIAMETER	PIN LENGTH	INNER PLATE WIDTH	INNER PLATE THICKNESS	OUTER PLATE THICKNESS	WEIGHT	BREAKING LOAD	CONNECTING ELEMENTS		
	p	b1 min.	d1 max.	d2 max.	b4 max.	h2 max.	T1	T2	q	FB min.	B	A	S
	mm	mm	mm	mm	mm	mm	mm	mm	kg/m	N			
25,4x7,75x15,88	25,4	7,75	15,88	4,45	16,40	12,00	1,60	1,50	0,97	18 690	•	•	•
25,4x23,2x8,51	25,4	23,20	8,51	4,45	32,50	12,00	1,60	1,50	0,89	18 690	•	•	•

CONNECTING ELEMENTS



B

A

S