



Ozubené řemeny oboustranné STD

Double-sided timing belts STD

STD DS4,5M

Ozubené řemeny / Timing belts

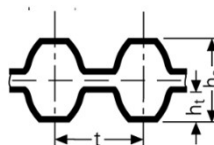
Objednací číslo / Part.No.

DS4,5M - 0615 - 15

DS4,5M... Profil, rozteč zubů / Tooth pitch

615 ... Délka řemenu / Belt length

15 ... Šířka řemenu / Belt width



DS4,5M

t = 4,5 mm

hs = 4,18 mm

ht = 1,71 mm



Typ STD DS4,5M - rozteč 4,5 mm / STD DS4,5M - Pitch 4,5 mm

Typ / Obj.č. Part.No.	Délka řemenu Pitch length [mm]	Počet zubů No. of Teeth	Typ 09 Šířka 9 mm Width 9 mm	Typ 15 Šířka 15 mm Width 15 mm	Typ 25 Šířka 25 mm Width 25 mm	Šířka rukávu Sleeve width [mm]
DS4,5M - 450	450,00	100	DS4,5M-0450-09	DS4,5M-0450-15	DS4,5M-0450-25	
DS4,5M - 491	491,00	109	DS4,5M-0491-09	DS4,5M-0491-15	DS4,5M-0491-25	
DS4,5M - 504	504,00	112	DS4,5M-0504-09	DS4,5M-0504-15	DS4,5M-0504-25	
DS4,5M - 518	518,00	115	DS4,5M-0518-09	DS4,5M-0518-15	DS4,5M-0518-25	
DS4,5M - 558	558,00	124	DS4,5M-0558-09	DS4,5M-0558-15	DS4,5M-0558-25	
DS4,5M - 563	563,00	125	DS4,5M-0563-09	DS4,5M-0563-15	DS4,5M-0563-25	
DS4,5M - 612	612,00	136	DS4,5M-0612-09	DS4,5M-0612-15	DS4,5M-0612-25	
DS4,5M - 630	630,00	140	DS4,5M-0630-09	DS4,5M-0630-15	DS4,5M-0630-25	
DS4,5M - 711	711,00	158	DS4,5M-0711-09	DS4,5M-0711-15	DS4,5M-0711-25	
DS4,5M - 729	729,00	162	DS4,5M-0729-09	DS4,5M-0729-15	DS4,5M-0729-25	
DS4,5M - 801	801,00	178	DS4,5M-0801-09	DS4,5M-0801-15	DS4,5M-0801-25	
DS4,5M - 1031	1031,00	229	DS4,5M-1031-09	DS4,5M-1031-15	DS4,5M-1031-25	
DS4,5M - 2110	2110,00	469	DS4,5M-2110-09	DS4,5M-2110-15	DS4,5M-2110-25	

Jiné rozměry na základě poptávky. / Other dimensions on demand.



Ozubené řemeny oboustranné STD

Double-sided timing belts STD

STD DS5M

Ozubené řemeny / Timing belts

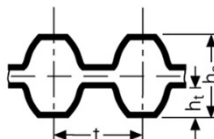
Objednací číslo / Part.No.

DS5M - 0725 - 15

DS5M... Profil, rozteč zubů / Tooth pitch

725 ... Délka řemenu / Belt length

15 ... Šířka řemenu / Belt width



DS5M

t = 5,0 mm

hs = 4,61 mm

ht = 1,91 mm



Typ STD DS5M - rozteč 5,0 mm / STD DS5M - Pitch 5,0 mm

Typ / Obj.č. Part.No.	Délka řemenu Pitch length [mm]	Počet zubů No. of Teeth	Typ 09 Šířka 9 mm Width 9 mm	Typ 15 Šířka 15 mm Width 15 mm	Typ 25 Šířka 25 mm Width 25 mm	Šířka rukávu Sleeve width [mm]
DS5M - 400	400,00	80	DS5M-0400-09	DS5M-0400-15	DS5M-0400-25	
DS5M - 425	425,00	85	DS5M-0425-09	DS5M-0425-15	DS5M-0425-25	
DS5M - 435	435,00	87	DS5M-0435-09	DS5M-0435-15	DS5M-0435-25	
DS5M - 450	450,00	90	DS5M-0450-09	DS5M-0450-15	DS5M-0450-25	
DS5M - 475	475,00	95	DS5M-0475-09	DS5M-0475-15	DS5M-0475-25	
DS5M - 490	490,00	98	DS5M-0490-09	DS5M-0490-15	DS5M-0490-25	
DS5M - 500	500,00	100	DS5M-0500-09	DS5M-0500-15	DS5M-0500-25	
DS5M - 520	520,00	104	DS5M-0520-09	DS5M-0520-15	DS5M-0520-25	
DS5M - 525	525,00	105	DS5M-0525-09	DS5M-0525-15	DS5M-0525-25	
DS5M - 550	550,00	110	DS5M-0550-09	DS5M-0550-15	DS5M-0550-25	
DS5M - 560	560,00	112	DS5M-0560-09	DS5M-0560-15	DS5M-0560-25	
DS5M - 575	575,00	115	DS5M-0575-09	DS5M-0575-15	DS5M-0575-25	
DS5M - 590	590,00	118	DS5M-0590-09	DS5M-0590-15	DS5M-0590-25	
DS5M - 600	600,00	120	DS5M-0600-09	DS5M-0600-15	DS5M-0600-25	
DS5M - 625	625,00	125	DS5M-0625-09	DS5M-0625-15	DS5M-0625-25	
DS5M - 650	650,00	130	DS5M-0650-09	DS5M-0650-15	DS5M-0650-25	



Ozubené řemeny oboustranné STD

Double-sided timing belts STD

STD DS5M

Ozubené řemeny / Timing belts

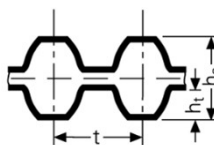
Objednáací číslo / Part.No.

DS5M - 0725 - 15

DS5M... Profil, rozteč zubů / Tooth pitch

725 ... Délka řemenu / Belt length

15 ... Šířka řemenu / Belt width



DS5M

t = 5,0 mm

hs = 4,61 mm

ht = 1,91 mm



Typ STD DS5M - rozteč 5,0 mm / STD DS5M - Pitch 5,0 mm

Typ / Obj.č. Part.No.	Délka řemenu Pitch length [mm]	Počet zubů No. of Teeth	Typ 09 Šířka 9 mm Width 9 mm	Typ 15 Šířka 15 mm Width 15 mm	Typ 25 Šířka 25 mm Width 25 mm	Šířka rukávu Sleeve width [mm]
DS5M - 665	665,00	133	DS5M-0665-09	DS5M-0665-15	DS5M-0665-25	
DS5M - 670	670,00	134	DS5M-0670-09	DS5M-0670-15	DS5M-0670-25	
DS5M - 675	675,00	135	DS5M-0675-09	DS5M-0675-15	DS5M-0675-25	
DS5M - 690	690,00	138	DS5M-0690-09	DS5M-0690-15	DS5M-0690-25	
DS5M - 695	695,00	139	DS5M-0695-09	DS5M-0695-15	DS5M-0695-25	
DS5M - 700	700,00	140	DS5M-0700-09	DS5M-0700-15	DS5M-0700-25	
DS5M - 710	710,00	142	DS5M-0710-09	DS5M-0710-15	DS5M-0710-25	
DS5M - 725	725,00	145	DS5M-0725-09	DS5M-0725-15	DS5M-0725-25	
DS5M - 730	730,00	146	DS5M-0730-09	DS5M-0730-15	DS5M-0730-25	
DS5M - 740	740,00	148	DS5M-0740-09	DS5M-0740-15	DS5M-0740-25	
DS5M - 750	750,00	150	DS5M-0750-09	DS5M-0750-15	DS5M-0750-25	
DS5M - 765	765,00	153	DS5M-0765-09	DS5M-0765-15	DS5M-0765-25	
DS5M - 775	775,00	155	DS5M-0775-09	DS5M-0775-15	DS5M-0775-25	
DS5M - 800	800,00	160	DS5M-0800-09	DS5M-0800-15	DS5M-0800-25	
DS5M - 830	830,00	166	DS5M-0830-09	DS5M-0830-15	DS5M-0830-25	
DS5M - 845	845,00	169	DS5M-0845-09	DS5M-0845-15	DS5M-0845-25	
DS5M - 850	850,00	170	DS5M-0850-09	DS5M-0850-15	DS5M-0850-25	
DS5M - 900	900,00	180	DS5M-0900-09	DS5M-0900-15	DS5M-0900-25	
DS5M - 950	950,00	190	DS5M-0950-09	DS5M-0950-15	DS5M-0950-25	
DS5M - 975	975,00	195	DS5M-0975-09	DS5M-0975-15	DS5M-0975-25	
DS5M - 1000	1000,00	200	DS5M-1000-09	DS5M-1000-15	DS5M-1000-25	
DS5M - 1025	1025,00	205	DS5M-1025-09	DS5M-1025-15	DS5M-1025-25	
DS5M - 1050	1050,00	210	DS5M-1050-09	DS5M-1050-15	DS5M-1050-25	
DS5M - 1055	1055,00	211	DS5M-1055-09	DS5M-1055-15	DS5M-1055-25	
DS5M - 1085	1085,00	217	DS5M-1085-09	DS5M-1085-15	DS5M-1085-25	
DS5M - 1105	1105,00	221	DS5M-1105-09	DS5M-1105-15	DS5M-1105-25	
DS5M - 1115	1115,00	223	DS5M-1115-09	DS5M-1115-15	DS5M-1115-25	
DS5M - 1120	1120,00	224	DS5M-1120-09	DS5M-1120-15	DS5M-1120-25	
DS5M - 1125	1125,00	225	DS5M-1125-09	DS5M-1125-15	DS5M-1125-25	
DS5M - 1135	1135,00	227	DS5M-1135-09	DS5M-1135-15	DS5M-1135-25	
DS5M - 1145	1145,00	229	DS5M-1145-09	DS5M-1145-15	DS5M-1145-25	
DS5M - 1160	1160,00	232	DS5M-1160-09	DS5M-1160-15	DS5M-1160-25	
DS5M - 1165	1165,00	233	DS5M-1165-09	DS5M-1165-15	DS5M-1165-25	
DS5M - 1195	1195,00	239	DS5M-1195-09	DS5M-1195-15	DS5M-1195-25	
DS5M - 1225	1225,00	245	DS5M-1225-09	DS5M-1225-15	DS5M-1225-25	
DS5M - 1270	1270,00	254	DS5M-1270-09	DS5M-1270-15	DS5M-1270-25	
DS5M - 1295	1295,00	259	DS5M-1295-09	DS5M-1295-15	DS5M-1295-25	
DS5M - 1350	1350,00	270	DS5M-1350-09	DS5M-1350-15	DS5M-1350-25	
DS5M - 1420	1420,00	284	DS5M-1420-09	DS5M-1420-15	DS5M-1420-25	
DS5M - 1500	1500,00	300	DS5M-1500-09	DS5M-1500-15	DS5M-1500-25	
DS5M - 1505	1505,00	301	DS5M-1505-09	DS5M-1505-15	DS5M-1505-25	
DS5M - 1530	1530,00	306	DS5M-1530-09	DS5M-1530-15	DS5M-1530-25	
DS5M - 1595	1595,00	319	DS5M-1595-09	DS5M-1595-15	DS5M-1595-25	
DS5M - 1605	1605,00	321	DS5M-1605-09	DS5M-1605-15	DS5M-1605-25	
DS5M - 1800	1800,00	360	DS5M-1800-09	DS5M-1800-15	DS5M-1800-25	
DS5M - 2000	2000,00	400	DS5M-2000-09	DS5M-2000-15	DS5M-2000-25	
DS5M - 2525	2525,00	505	DS5M-2525-09	DS5M-2525-15	DS5M-2525-25	

Jiné rozměry na základě poptávky. / Other dimensions on demand.



Ozubené řemeny oboustranné STD

Double-sided timing belts STD

STD DS8M

Ozubené řemeny / Timing belts

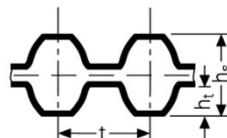
Objednací číslo / Part.No.

DS8M - 1040 - 30

DS8M... Profil, rozteč zubů / Tooth pitch

1040 ... Délka řemenu / Belt length

30 ... Šířka řemenu / Belt width



DS8M

t = 8,0 mm

hs = 7,3 mm

ht = 3,05 mm



Typ STD DS8M - rozteč 8,0 mm / STD DS8M - Pitch 8,0 mm

Typ / Obj.č. Part.No.	Délka řemenu Pitch length [mm]	Počet zubů No. of Teeth	Typ 20 Šířka 20 mm Width 20 mm	Typ 30 Šířka 30 mm Width 30 mm	Typ 50 Šířka 50 mm Width 50 mm	Typ 85 Šířka 85 mm Width 85 mm	Šířka rukávu Sleeve width [mm]
DS8M - 424	424,00	53	DS8M-0424-20	DS8M-0424-30	DS8M-0424-50	DS8M-0424-85	
DS8M - 440	440,00	55	DS8M-0440-20	DS8M-0440-30	DS8M-0440-50	DS8M-0440-85	
DS8M - 456	456,00	57	DS8M-0456-20	DS8M-0456-30	DS8M-0456-50	DS8M-0456-85	
DS8M - 480	480,00	60	DS8M-0480-20	DS8M-0480-30	DS8M-0480-50	DS8M-0480-85	
DS8M - 496	496,00	62	DS8M-0496-20	DS8M-0496-30	DS8M-0496-50	DS8M-0496-85	
DS8M - 512	512,00	64	DS8M-0512-20	DS8M-0512-30	DS8M-0512-50	DS8M-0512-85	
DS8M - 520	520,00	65	DS8M-0520-20	DS8M-0520-30	DS8M-0520-50	DS8M-0520-85	
DS8M - 528	528,00	66	DS8M-0528-20	DS8M-0528-30	DS8M-0528-50	DS8M-0528-85	
DS8M - 560	560,00	70	DS8M-0560-20	DS8M-0560-30	DS8M-0560-50	DS8M-0560-85	
DS8M - 584	584,00	73	DS8M-0584-20	DS8M-0584-30	DS8M-0584-50	DS8M-0584-85	
DS8M - 600	600,00	75	DS8M-0600-20	DS8M-0600-30	DS8M-0600-50	DS8M-0600-85	CT-430
DS8M - 632	632,00	79	DS8M-0632-20	DS8M-0632-30	DS8M-0632-50	DS8M-0632-85	
DS8M - 640	640,00	80	DS8M-0640-20	DS8M-0640-30	DS8M-0640-50	DS8M-0640-85	CT-430
DS8M - 656	656,00	82	DS8M-0656-20	DS8M-0656-30	DS8M-0656-50	DS8M-0656-85	CT-430
DS8M - 672	672,00	84	DS8M-0672-20	DS8M-0672-30	DS8M-0672-50	DS8M-0672-85	
DS8M - 680	680,00	85	DS8M-0680-20	DS8M-0680-30	DS8M-0680-50	DS8M-0680-85	
DS8M - 712	712,00	89	DS8M-0712-20	DS8M-0712-30	DS8M-0712-50	DS8M-0712-85	
DS8M - 720	720,00	90	DS8M-0720-20	DS8M-0720-30	DS8M-0720-50	DS8M-0720-85	CT-430
DS8M - 728	728,00	91	DS8M-0728-20	DS8M-0728-30	DS8M-0728-50	DS8M-0728-85	
DS8M - 760	760,00	95	DS8M-0760-20	DS8M-0760-30	DS8M-0760-50	DS8M-0760-85	CT-430
DS8M - 800	800,00	100	DS8M-0800-20	DS8M-0800-30	DS8M-0800-50	DS8M-0800-85	CT-430
DS8M - 824	824,00	103	DS8M-0824-20	DS8M-0824-30	DS8M-0824-50	DS8M-0824-85	
DS8M - 840	840,00	105	DS8M-0840-20	DS8M-0840-30	DS8M-0840-50	DS8M-0840-85	
DS8M - 848	848,00	106	DS8M-0848-20	DS8M-0848-30	DS8M-0848-50	DS8M-0848-85	CT-430
DS8M - 880	880,00	110	DS8M-0880-20	DS8M-0880-30	DS8M-0880-50	DS8M-0880-85	CT-430
DS8M - 888	888,00	111	DS8M-0888-20	DS8M-0888-30	DS8M-0888-50	DS8M-0888-85	
DS8M - 896	896,00	112	DS8M-0896-20	DS8M-0896-30	DS8M-0896-50	DS8M-0896-85	
DS8M - 920	920,00	115	DS8M-0920-20	DS8M-0920-30	DS8M-0920-50	DS8M-0920-85	
DS8M - 944	944,00	118	DS8M-0944-20	DS8M-0944-30	DS8M-0944-50	DS8M-0944-85	
DS8M - 952	952,00	119	DS8M-0952-20	DS8M-0952-30	DS8M-0952-50	DS8M-0952-85	
DS8M - 960	960,00	120	DS8M-0960-20	DS8M-0960-30	DS8M-0960-50	DS8M-0960-85	CT-430
DS8M - 976	976,00	122	DS8M-0976-20	DS8M-0976-30	DS8M-0976-50	DS8M-0976-85	
DS8M - 984	984,00	123	DS8M-0984-20	DS8M-0984-30	DS8M-0984-50	DS8M-0984-85	
DS8M - 1000	1000,00	125	DS8M-1000-20	DS8M-1000-30	DS8M-1000-50	DS8M-1000-85	CT-430
DS8M - 1032	1032,00	129	DS8M-1032-20	DS8M-1032-30	DS8M-1032-50	DS8M-1032-85	
DS8M - 1040	1040,00	130	DS8M-1040-20	DS8M-1040-30	DS8M-1040-50	DS8M-1040-85	
DS8M - 1056	1056,00	132	DS8M-1056-20	DS8M-1056-30	DS8M-1056-50	DS8M-1056-85	CT-430
DS8M - 1064	1064,00	135	DS8M-1064-20	DS8M-1064-30	DS8M-1064-50	DS8M-1064-85	CT-430
DS8M - 1072	1072,00	137	DS8M-1072-20	DS8M-1072-30	DS8M-1072-50	DS8M-1072-85	CT-430
DS8M - 1080	1080,00	140	DS8M-1080-20	DS8M-1080-30	DS8M-1080-50	DS8M-1080-85	CT-430
DS8M - 1120	1120,00	140	DS8M-1120-20	DS8M-1120-30	DS8M-1120-50	DS8M-1120-85	CT-430
DS8M - 1128	1128,00	141	DS8M-1128-20	DS8M-1128-30	DS8M-1128-50	DS8M-1128-85	
DS8M - 1136	1136,00	142	DS8M-1136-20	DS8M-1136-30	DS8M-1136-50	DS8M-1136-85	
DS8M - 1152	1152,00	144	DS8M-1152-20	DS8M-1152-30	DS8M-1152-50	DS8M-1152-85	
DS8M - 1160	1160,00	145	DS8M-1160-20	DS8M-1160-30	DS8M-1160-50	DS8M-1160-85	
DS8M - 1184	1184,00	148	DS8M-1184-20	DS8M-1184-30	DS8M-1184-50	DS8M-1184-85	
DS8M - 1192	1192,00	149	DS8M-1192-20	DS8M-1192-30	DS8M-1192-50	DS8M-1192-85	
DS8M - 1200	1200,00	150	DS8M-1200-20	DS8M-1200-30	DS8M-1200-50	DS8M-1200-85	CT-430
DS8M - 1216	1216,00	152	DS8M-1216-20	DS8M-1216-30	DS8M-1216-50	DS8M-1216-85	CT-430
DS8M - 1224	1224,00	153	DS8M-1224-20	DS8M-1224-30	DS8M-1224-50	DS8M-1224-85	
DS8M - 1240	1240,00	155	DS8M-1240-20	DS8M-1240-30	DS8M-1240-50	DS8M-1240-85	CT-430
DS8M - 1248	1248,00	156	DS8M-1248-20	DS8M-1248-30	DS8M-1248-50	DS8M-1248-85	
DS8M - 1256	1256,00	157	DS8M-1256-20	DS8M-1256-30	DS8M-1256-50	DS8M-1256-85	CT-430



Ozubené řemeny oboustranné STD

Double-sided timing belts STD

STD DS8M

Ozubené řemeny / Timing belts

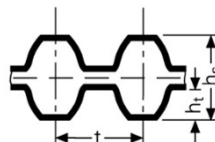
Objednávací číslo / Part.No.

DS8M - 1040 - 30

DS8M... Profil, rozteč zubů / Tooth pitch

1040 ... Délka řemenu / Belt length

30 ... Šířka řemenu / Belt width



DS8M

t = 8,0 mm

hs = 7,3 mm

ht = 3,05 mm



Typ STD DS8M - rozteč 8,0 mm / STD DS8M - Pitch 8,0 mm

Typ / Obj.č. Part.No.	Délka řemenu Pitch length [mm]	Počet zubů No. of Teeth	Typ 20 Šířka 20 mm Width 20 mm	Typ 30 Šířka 30 mm Width 30 mm	Typ 50 Šířka 50 mm Width 50 mm	Typ 85 Šířka 85 mm Width 85 mm	Šířka rukávu Sleeve width [mm]
DS8M - 1272	1272,00	159	DS8M-1272-20	DS8M-1272-30	DS8M-1272-50	DS8M-1272-85	
DS8M - 1280	1280,00	160	DS8M-1280-20	DS8M-1280-30	DS8M-1280-50	DS8M-1280-85	CT-430
DS8M - 1296	1296,00	162	DS8M-1296-20	DS8M-1296-30	DS8M-1296-50	DS8M-1296-85	CT-430
DS8M - 1304	1304,00	163	DS8M-1304-20	DS8M-1304-30	DS8M-1304-50	DS8M-1304-85	CT-430
DS8M - 1312	1312,00	164	DS8M-1312-20	DS8M-1312-30	DS8M-1312-50	DS8M-1312-85	CT-430
DS8M - 1320	1320,00	165	DS8M-1320-20	DS8M-1320-30	DS8M-1320-50	DS8M-1320-85	
DS8M - 1344	1344,00	168	DS8M-1344-20	DS8M-1344-30	DS8M-1344-50	DS8M-1344-85	CT-430
DS8M - 1352	1352,00	169	DS8M-1352-20	DS8M-1352-30	DS8M-1352-50	DS8M-1352-85	
DS8M - 1360	1360,00	170	DS8M-1360-20	DS8M-1360-30	DS8M-1360-50	DS8M-1360-85	
DS8M - 1384	1384,00	173	DS8M-1384-20	DS8M-1384-30	DS8M-1384-50	DS8M-1384-85	
DS8M - 1392	1392,00	174	DS8M-1392-20	DS8M-1392-30	DS8M-1392-50	DS8M-1392-85	
DS8M - 1400	1400,00	175	DS8M-1400-20	DS8M-1400-30	DS8M-1400-50	DS8M-1400-85	CT-430
DS8M - 1424	1424,00	178	DS8M-1424-20	DS8M-1424-30	DS8M-1424-50	DS8M-1424-85	
DS8M - 1440	1440,00	180	DS8M-1440-20	DS8M-1440-30	DS8M-1440-50	DS8M-1440-85	CT-430
DS8M - 1480	1480,00	185	DS8M-1480-20	DS8M-1480-30	DS8M-1480-50	DS8M-1480-85	CT-430
DS8M - 1520	1520,00	190	DS8M-1520-20	DS8M-1520-30	DS8M-1520-50	DS8M-1520-85	
DS8M - 1552	1552,00	194	DS8M-1552-20	DS8M-1552-30	DS8M-1552-50	DS8M-1552-85	CT-430
DS8M - 1600	1600,00	200	DS8M-1600-20	DS8M-1600-30	DS8M-1600-50	DS8M-1600-85	CT-430
DS8M - 1648	1648,00	206	DS8M-1648-20	DS8M-1648-30	DS8M-1648-50	DS8M-1648-85	
DS8M - 1680	1680,00	210	DS8M-1680-20	DS8M-1680-30	DS8M-1680-50	DS8M-1680-85	
DS8M - 1696	1696,00	212	DS8M-1696-20	DS8M-1696-30	DS8M-1696-50	DS8M-1696-85	
DS8M - 1728	1728,00	216	DS8M-1728-20	DS8M-1728-30	DS8M-1728-50	DS8M-1728-85	
DS8M - 1760	1760,00	220	DS8M-1760-20	DS8M-1760-30	DS8M-1760-50	DS8M-1760-85	CT-430
DS8M - 1776	1776,00	222	DS8M-1776-20	DS8M-1776-30	DS8M-1776-50	DS8M-1776-85	CT-430
DS8M - 1800	1800,00	225	DS8M-1800-20	DS8M-1800-30	DS8M-1800-50	DS8M-1800-85	CT-430
DS8M - 1808	1808,00	226	DS8M-1808-20	DS8M-1808-30	DS8M-1808-50	DS8M-1808-85	
DS8M - 1816	1816,00	227	DS8M-1816-20	DS8M-1816-30	DS8M-1816-50	DS8M-1816-85	
DS8M - 1832	1832,00	229	DS8M-1832-20	DS8M-1832-30	DS8M-1832-50	DS8M-1832-85	
DS8M - 1880	1880,00	235	DS8M-1880-20	DS8M-1880-30	DS8M-1880-50	DS8M-1880-85	
DS8M - 1912	1912,00	239	DS8M-1912-20	DS8M-1912-30	DS8M-1912-50	DS8M-1912-85	CT-430
DS8M - 1952	1952,00	244	DS8M-1952-20	DS8M-1952-30	DS8M-1952-50	DS8M-1952-85	
DS8M - 2000	2000,00	250	DS8M-2000-20	DS8M-2000-30	DS8M-2000-50	DS8M-2000-85	CT-430
DS8M - 2040	2040,00	255	DS8M-2040-20	DS8M-2040-30	DS8M-2040-50	DS8M-2040-85	
DS8M - 2048	2048,00	256	DS8M-2048-20	DS8M-2048-30	DS8M-2048-50	DS8M-2048-85	
DS8M - 2120	2120,00	265	DS8M-2120-20	DS8M-2120-30	DS8M-2120-50	DS8M-2120-85	
DS8M - 2160	2160,00	270	DS8M-2160-20	DS8M-2160-30	DS8M-2160-50	DS8M-2160-85	
DS8M - 2240	2240,00	280	DS8M-2240-20	DS8M-2240-30	DS8M-2240-50	DS8M-2240-85	CT-430
DS8M - 2272	2272,00	284	DS8M-2272-20	DS8M-2272-30	DS8M-2272-50	DS8M-2272-85	
DS8M - 2304	2304,00	288	DS8M-2304-20	DS8M-2304-30	DS8M-2304-50	DS8M-2304-85	
DS8M - 2400	2400,00	300	DS8M-2400-20	DS8M-2400-30	DS8M-2400-50	DS8M-2400-85	
DS8M - 2496	2496,00	312	DS8M-2496-20	DS8M-2496-30	DS8M-2496-50	DS8M-2496-85	
DS8M - 2560	2560,00	320	DS8M-2560-20	DS8M-2560-30	DS8M-2560-50	DS8M-2560-85	
DS8M - 2600	2600,00	325	DS8M-2600-20	DS8M-2600-30	DS8M-2600-50	DS8M-2600-85	
DS8M - 2800	2800,00	350	DS8M-2800-20	DS8M-2800-30	DS8M-2800-50	DS8M-2800-85	
DS8M - 2880	2880,00	360	DS8M-2880-20	DS8M-2880-30	DS8M-2880-50	DS8M-2880-85	
DS8M - 2944	2944,00	368	DS8M-2944-20	DS8M-2944-30	DS8M-2944-50	DS8M-2944-85	
DS8M - 3200	3200,00	400	DS8M-3200-20	DS8M-3200-30	DS8M-3200-50	DS8M-3200-85	
DS8M - 3272	3272,00	409	DS8M-3272-20	DS8M-3272-30	DS8M-3272-50	DS8M-3272-85	
DS8M - 3600	3600,00	450	DS8M-3600-20	DS8M-3600-30	DS8M-3600-50	DS8M-3600-85	
DS8M - 3680	3680,00	460	DS8M-3680-20	DS8M-3680-30	DS8M-3680-50	DS8M-3680-85	
DS8M - 3720	3720,00	465	DS8M-3720-20	DS8M-3720-30	DS8M-3720-50	DS8M-3720-85	
DS8M - 3904	3904,00	488	DS8M-3904-20	DS8M-3904-30	DS8M-3904-50	DS8M-3904-85	
DS8M - 4400	4400,00	550	DS8M-4400-20	DS8M-4400-30	DS8M-4400-50	DS8M-4400-85	

Jiné rozměry na základě poptávky. / Other dimensions on demand.

Oz. řemeny CONTITECH DS8M jsou vyráběny také v provedení SYNCHROFORCE CXP pro vysoké výkony a CXA pro vysoké kroutící momenty.



Ozubené řemeny oboustranné STD

Double-sided timing belts STD

STD DS14M

Ozubené řemeny / Timing belts

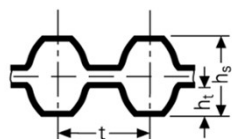
Objednáací číslo / Part.No.

DS14M - 1190 - 85

DS14M... Profil, rozteč zubů / Tooth pitch

1190... Délka řemenu / Belt length

85 ... Šířka řemenu / Belt width



DS14M

t = 14,0 mm

hs = 12,85 mm

ht = 5,3 mm



Typ STD DS14M - rozteč 14,0 mm / STD DS14M - Pitch 14,0 mm

Typ / Obj.č. Part.No.	Délka řemenu Pitch length [mm]	Zubů Teeth	Typ 40 Šířka 40 mm Width 40 mm	Typ 55 Šířka 55 mm Width 55 mm	Typ 85 Šířka 85 mm Width 85 mm	Typ 115 Šířka 115 mm Width 115 mm	Typ 170 Šířka 170 mm Width 170 mm	Šířka ruk. Sleeve w. [mm]
DS14M - 1008	1008,00	72	DS14M-1008-40	DS14M-1008-55	DS14M-1008-85	DS14M-1008-115	DS14M-1008-170	
DS14M - 1120	1120,00	80	DS14M-1120-40	DS14M-1120-55	DS14M-1120-85	DS14M-1120-115	DS14M-1120-170	
DS14M - 1190	1190,00	85	DS14M-1190-40	DS14M-1190-55	DS14M-1190-85	DS14M-1190-115	DS14M-1190-170	
DS14M - 1246	1246,00	89	DS14M-1246-40	DS14M-1246-55	DS14M-1246-85	DS14M-1246-115	DS14M-1246-170	
DS14M - 1400	1400,00	100	DS14M-1400-40	DS14M-1400-55	DS14M-1400-85	DS14M-1400-115	DS14M-1400-170	
DS14M - 1540	1540,00	110	DS14M-1540-40	DS14M-1540-55	DS14M-1540-85	DS14M-1540-115	DS14M-1540-170	
DS14M - 1610	1610,00	115	DS14M-1610-40	DS14M-1610-55	DS14M-1610-85	DS14M-1610-115	DS14M-1610-170	
DS14M - 1652	1652,00	118	DS14M-1652-40	DS14M-1652-55	DS14M-1652-85	DS14M-1652-115	DS14M-1652-170	
DS14M - 1750	1750,00	125	DS14M-1750-40	DS14M-1750-55	DS14M-1750-85	DS14M-1750-115	DS14M-1750-170	
DS14M - 1778	1778,00	127	DS14M-1778-40	DS14M-1778-55	DS14M-1778-85	DS14M-1778-115	DS14M-1778-170	
DS14M - 1806	1806,00	129	DS14M-1806-40	DS14M-1806-55	DS14M-1806-85	DS14M-1806-115	DS14M-1806-170	
DS14M - 1890	1890,00	135	DS14M-1890-40	DS14M-1890-55	DS14M-1890-85	DS14M-1890-115	DS14M-1890-170	
DS14M - 1904	1904,00	136	DS14M-1904-40	DS14M-1904-55	DS14M-1904-85	DS14M-1904-115	DS14M-1904-170	
DS14M - 1932	1932,00	138	DS14M-1932-40	DS14M-1932-55	DS14M-1932-85	DS14M-1932-115	DS14M-1932-170	
DS14M - 2002	2002,00	143	DS14M-2002-40	DS14M-2002-55	DS14M-2002-85	DS14M-2002-115	DS14M-2002-170	
DS14M - 2100	2100,00	150	DS14M-2100-40	DS14M-2100-55	DS14M-2100-85	DS14M-2100-115	DS14M-2100-170	
DS14M - 2240	2240,00	160	DS14M-2240-40	DS14M-2240-55	DS14M-2240-85	DS14M-2240-115	DS14M-2240-170	
DS14M - 2310	2310,00	165	DS14M-2310-40	DS14M-2310-55	DS14M-2310-85	DS14M-2310-115	DS14M-2310-170	
DS14M - 2380	2380,00	170	DS14M-2380-40	DS14M-2380-55	DS14M-2380-85	DS14M-2380-115	DS14M-2380-170	
DS14M - 2450	2450,00	175	DS14M-2450-40	DS14M-2450-55	DS14M-2450-85	DS14M-2450-115	DS14M-2450-170	
DS14M - 2506	2506,00	179	DS14M-2506-40	DS14M-2506-55	DS14M-2506-85	DS14M-2506-115	DS14M-2506-170	
DS14M - 2590	2590,00	185	DS14M-2590-40	DS14M-2590-55	DS14M-2590-85	DS14M-2590-115	DS14M-2590-170	
DS14M - 2660	2660,00	190	DS14M-2660-40	DS14M-2660-55	DS14M-2660-85	DS14M-2660-115	DS14M-2660-170	
DS14M - 2800	2800,00	200	DS14M-2800-40	DS14M-2800-55	DS14M-2800-85	DS14M-2800-115	DS14M-2800-170	
DS14M - 3150	3150,00	225	DS14M-3150-40	DS14M-3150-55	DS14M-3150-85	DS14M-3150-115	DS14M-3150-170	
DS14M - 3248	3248,00	232	DS14M-3248-40	DS14M-3248-55	DS14M-3248-85	DS14M-3248-115	DS14M-3248-170	
DS14M - 3500	3500,00	250	DS14M-3500-40	DS14M-3500-55	DS14M-3500-85	DS14M-3500-115	DS14M-3500-170	
DS14M - 3556	3556,00	254	DS14M-3556-40	DS14M-3556-55	DS14M-3556-85	DS14M-3556-115	DS14M-3556-170	
DS14M - 3850	3850,00	275	DS14M-3850-40	DS14M-3850-55	DS14M-3850-85	DS14M-3850-115	DS14M-3850-170	
DS14M - 4004	4004,00	286	DS14M-4004-40	DS14M-4004-55	DS14M-4004-85	DS14M-4004-115	DS14M-4004-170	
DS14M - 4060	4060,00	290	DS14M-4060-40	DS14M-4060-55	DS14M-4060-85	DS14M-4060-115	DS14M-4060-170	
DS14M - 4326	4326,00	309	DS14M-4326-40	DS14M-4326-55	DS14M-4326-85	DS14M-4326-115	DS14M-4326-170	
DS14M - 4508	4508,00	322	DS14M-4508-40	DS14M-4508-55	DS14M-4508-85	DS14M-4508-115	DS14M-4508-170	
DS14M - 5012	5012,00	358	DS14M-5012-40	DS14M-5012-55	DS14M-5012-85	DS14M-5012-115	DS14M-5012-170	

Jiné rozměry na základě poptávky. / Other dimensions on demand.