

RCK 15 - Samostředící/Self-centring
Pro střední zatížení/For Standard Hubs

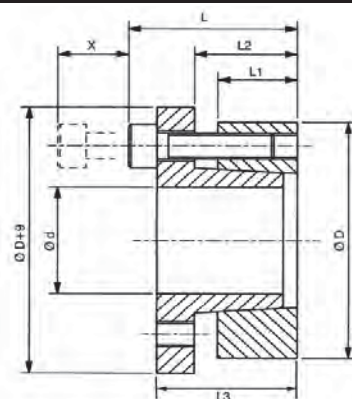
Doporučená tolerance: Hřídel-h8, Náboj-H8

Recommended tolerances: Shaft-h8, Hub-H8

Drsnost povrchu: Rt max. 16µm

Clamping surfaces: Rtmax. 16µm

Materiál: ST = ocel C43 / ST = steel C43



Upínací pouzdra RCK15 - samostředící / Clamping Elements RCK15 - Self-centring

Označení / Obj.č. Part.No.	Rozměry / Dimensions						Moment/ Torque Mt [Nm]	Tlak/Pressure Hř./Shaft Náb./Hub		Up.šrouby/Clamp.Screws			Uvolň./Extr.		Hmot/ Weight [kg]
	d [mm]	D [mm]	L1 [mm]	L2 [mm]	L3 [mm]	L [mm]		[N/mm2]	[N/mm2]	Počet/ No.	Typ/ Type	Moment/ Torq.Nm	Typ/ Type	Počet/ No.	
RCK15-14x55	14	55	17	22	31	39	290	458	118	4	M8x25	41	M8	2	0.51
RCK15-16x55	16	55	17	22	31	39	320	400	118	4	M8x25	41	M8	2	0.49
RCK15-18x55	18	55	17	22	31	39	360	356	118	4	M8x25	41	M8	2	0.48
RCK15-19x55	19	55	17	22	31	39	380	337	118	4	M8x25	41	M8	2	0.47
RCK15-20x55	20	55	17	22	31	39	400	320	118	4	M8x25	41	M8	2	0.47
RCK15-22x55	22	55	17	22	31	39	440	290	118	4	M8x25	41	M8	2	0.45
RCK15-24x55	24	55	17	22	31	39	480	265	118	4	M8x25	41	M8	2	0.44
RCK15-25x55	25	55	17	22	31	39	500	255	118	4	M8x25	41	M8	2	0.43
RCK15-28x55	28	55	17	22	31	39	560	228	118	4	M8x25	41	M8	2	0.41
RCK15-30x55	30	55	17	22	31	39	600	213	118	4	M8x25	41	M8	2	0.40
RCK15-24x65	24	65	17	22	31	39	620	332	122	5	M8x25	41	M8	3	0.68
RCK15-25x65	25	65	17	22	31	39	640	320	122	5	M8x25	41	M8	3	0.63
RCK15-28x65	28	65	17	22	31	39	720	285	122	5	M8x25	41	M8	3	0.61
RCK15-30x65	30	65	17	22	31	39	770	267	122	5	M8x25	41	M8	3	0.58
RCK15-32x65	32	65	17	22	31	39	820	250	122	5	M8x25	41	M8	3	0.56
RCK15-35x65	35	65	17	22	31	39	900	228	122	5	M8x25	41	M8	3	0.53
RCK15-38x65	38	65	17	22	31	39	980	210	122	5	M8x25	41	M8	3	0.50
RCK15-40x65	40	65	17	22	31	39	1030	200	122	5	M8x25	41	M8	3	0.47
RCK15-30x80	30	80	20	25	33	41	1080	315	120	7	M8x25	41	M8	3	1,04
RCK15-32x80	32	80	20	25	33	41	1150	298	120	7	M8x25	41	M8	3	1,03
RCK15-35x80	35	80	20	25	33	41	1260	272	120	7	M8x25	41	M8	3	0.98
RCK15-38x80	38	80	20	25	33	41	1370	250	120	7	M8x25	41	M8	3	0.94
RCK15-40x80	40	80	20	25	33	41	1440	238	120	7	M8x25	41	M8	3	0.91
RCK15-42x80	42	80	20	25	33	41	1510	226	120	7	M8x25	41	M8	3	0.89
RCK15-45x80	45	80	20	25	33	41	1620	212	120	7	M8x25	41	M8	3	0.83
RCK15-48x80	48	80	20	25	33	41	1730	198	120	7	M8x25	41	M8	3	0.79
RCK15-50x80	50	80	20	25	33	41	1800	190	120	7	M8x25	41	M8	3	0.74
RCK15-40x80	40	80	20	25	33	41	2150	340	169	10	M8x25	41	M8	4	0.89
RCK15-45x80	45	80	20	25	33	41	2420	302	169	10	M8x25	41	M8	4	0.85
RCK15-50x80	50	80	20	25	33	41	2700	272	169	10	M8x25	41	M8	4	0.78