

**RCK 60 - Samostředící/Self-centring**  
Kompaktní pouzdra/Compact Units



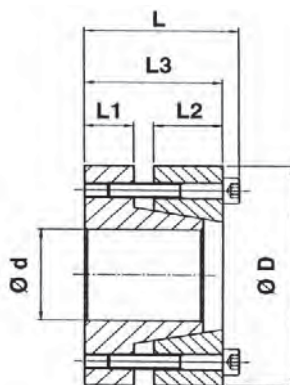
**Doporučená tolerance: Hřídel-h8, Náboj-H8**

Recommended tolerances: Shaft-h8, Hub-H8

**Drsnost povrchu: Rt max. 16µm**

Clamping surfaces: R<sub>t</sub>max. 16µm

**Materiál: ST = ocel C43 / ST = steel C43**



**Upínací pouzdra RCK60 - samostředící / Clamping Elements RCK60 - Self-centring**

Označení / Obj.č. Part.No.	Rozměry / Dimensions						Moment/ Torque Mt [Nm]	Ax.síla Ax.Force F [N]	Tlak/Pressure		Up.šrouby/Clamp.Screws			Uvolň./Extr.	
	d [mm]	D [mm]	L1 [mm]	L2 [mm]	L3 [mm]	L [mm]			Hř./Shaft [N/mm <sup>2</sup> ]	Náb./Hub [N/mm <sup>2</sup> ]	Počet/ No.	Typ/ Type	Moment/ Torq.Nm	Typ/ Type	Počet/ No.
RCK60-20x47	20	47	10	14	28	34	245	29400	210	93	5	M6x25	17	M6	3
RCK60-22x47	22	47	10	14	28	34	265	30000	196	93	5	M6x25	17	M6	3
RCK60-24x50	24	50	10	14	28	34	370	32300	215	108	6	M6x25	17	M6	3
RCK60-25x50	25	50	10	14	28	34	390	33300	210	108	6	M6x25	17	M6	3
RCK60-30x55	30	55	10	14	28	34	480	41200	186	98	6	M6x25	17	M6	3
RCK60-35x60	35	60	10	14	28	34	735	44100	186	108	8	M6x25	17	M6	4
RCK60-38x65	38	65	10	14	28	34	790	46100	206	103	8	M6x25	17	M6	4
RCK60-40x65	40	65	10	14	28	34	830	47000	186	103	8	M6x25	17	M6	4
RCK60-42x75	42	75	12	18	35	43	1450	66000	225	132	7	M8x30	41	M8	4
RCK60-45x75	45	75	12	18	35	43	1560	70000	220	132	7	M8x30	41	M8	4
RCK60-50x80	50	80	12	18	35	43	1650	72000	206	127	7	M8x30	41	M8	4
RCK60-55x85	55	85	12	18	35	43	2250	80000	210	132	8	M8x30	41	M8	4
RCK60-60x90	60	90	12	18	35	43	2450	83000	186	122	8	M8x30	41	M8	4
RCK60-65x95	65	95	12	18	35	43	2890	90000	200	132	9	M8x30	41	M8	3
RCK60-70x110	70	110	16	24	46	56	4700	130000	220	140	8	M10x40	83	M10	4