

RCK 61 - Samostředící/Self-centring
Malé rozměry pouzdra/Compact Small Units

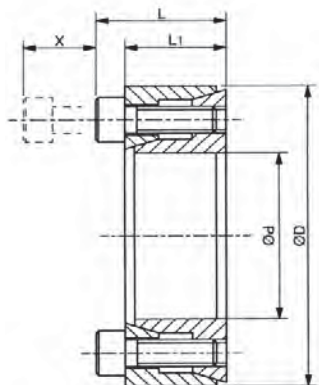
Doporučená tolerance: Hřídel-h8, Náboj-H8

Recommended tolerances: Shaft-h8, Hub-H8

Drsnost povrchu: Rt max. 16µm

Clamping surfaces: Rtmax. 16µm

Materiál: ST = ocel C43 / ST = steel C43



Upínací pouzdra RCK61 - samostředící / Clamping Elements RCK61 - Self-centring

Označení / Obj.č. Part.No.	Rozměry / Dimensions				Moment/ Torque Mt [Nm]	Tlak/Pressure		Up.šrouby/Clamp.Screws			Uvolň./Extr.		Hmot/ Weight [kg]
	d [mm]	D [mm]	L1 [mm]	L [mm]		Hř./Shaft [N/mm2]	Náb./Hub [N/mm2]	Počet/ No.	Typ/ Type	Moment/ Torq.Nm	Typ/ Type	Počet/ No.	
RCK61-10x20	10	20	13	15,5	15	110	55	4	M2,5x12	1,2	M2,5	2	0.08
RCK61-12x22	12	22	13	15,5	20	90	50	4	M2,5x12	1,2	M2,5	2	0.09
RCK61-14x26	14	26	17	20	35	105	55	4	M3x16	2,1	M3	2	0.12
RCK61-15x28	15	28	17	20	40	100	50	4	M3x16	2,1	M3	2	0.13
RCK61-16x32	16	32	17	21	70	130	65	4	M4x16	4,9	M4	2	0.15
RCK61-18x35	18	35	21	25	80	115	60	4	M4x20	4,9	M4	2	0.20
RCK61-19x35	19	35	21	25	85	110	60	4	M4x20	4,9	M4	2	0.19
RCK61-20x38	20	38	21	26	220	220	115	6	M5x20	9,7	M5	3	0.21
RCK61-22x40	22	40	21	26	240	200	110	6	M5x20	9,7	M5	3	0.22
RCK61-24x47	24	47	26	32	380	220	110	6	M6x25	16,2	M6	3	0.31
RCK61-25x47	25	47	26	32	390	210	110	6	M6x25	16,2	M6	3	0.30