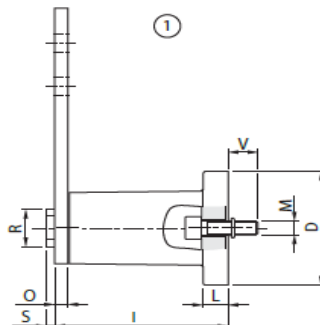
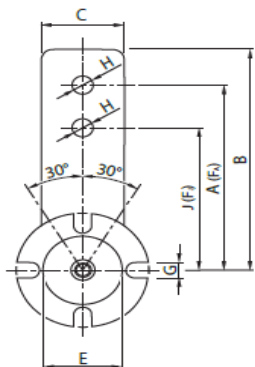


Typ RE

| Typ type | A | B | C | Ø D | Ø E | G | Ø H | I | J | L | M | O | F _A (N) | F _J (N) | Hmotnost weight (kg) |
|-------------|-----|-------|----|-----|-----|----|------|----------------|-----|----|------|----|-----------------------|-----------------------|-------------------------|
| RE 10 | 80 | 90 | 25 | 40 | 20 | 7 | 8,5 | 50,5 +1,5/-0,5 | 60 | 6 | M 6 | 5 | 0 ÷ 85 | 0 ÷ 113 | 0,28 |
| RE 20 | 100 | 112,5 | 30 | 50 | 30 | 9 | 10,5 | 62,5 +1,5/-0,5 | 80 | 8 | M 8 | 5 | 0 ÷ 136 | 0 ÷ 170 | 0,48 |
| RE 30 | 100 | 115 | 35 | 60 | 35 | 9 | 10,5 | 77 +1,5/-0,5 | 80 | 10 | M 10 | 6 | 0 ÷ 340 | 0 ÷ 425 | 0,73 |
| RE 40 | 130 | 155 | 50 | 80 | 48 | 11 | 12,5 | 106 +2,0/-0,5 | 100 | 15 | M 12 | 8 | 0 ÷ 790 | 0 ÷ 1027 | 2,00 |
| RE 50 | 175 | 205 | 65 | 100 | 62 | 13 | 20,5 | 140 +2,0/-1,0 | 140 | 15 | M 16 | 10 | 0 ÷ 1600 | 0 ÷ 2000 | 4,20 |
| RE 60 | 225 | 260 | 80 | 120 | 80 | 13 | 20,5 | 199 +2,5/-1,5 | 180 | 18 | M 20 | 12 | 0 ÷ 2550 | 0 ÷ 3190 | 7,00 |
| RE 70 | 250 | 290 | 90 | 130 | 78 | 17 | 20,5 | 209 +2,5/-1,5 | 200 | 20 | M 24 | 20 | 0 ÷ 3950 | 0 ÷ 4950 | 9,60 |

1) Úhel natočení ± 30° / Rotation angle ± 30°

Pracovní teplota -40°C až +80°C. / Operating temperature from -40°C to +80°C.

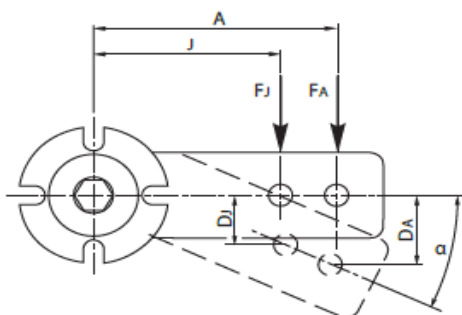


Typ FE - se středovým šroubem z vnější strany / with interior M screw

| Typ type | A | B | C | Ø D | Ø E | G | Ø H | I | J | L | M | O | Ø R | S | V | F _A (N) | F _J (N) | Hmotnost weight (kg) |
|-------------|-----|-------|----|-----|-----|----|------|----------------|-----|----|------|----|-----|-----|----|-----------------------|-----------------------|-------------------------|
| FE 10 | 80 | 90 | 25 | 40 | 20 | 7 | 8,5 | 50,5 +1,5/-0,5 | 60 | 6 | M 5 | 5 | 14 | 3,5 | 10 | 0 ÷ 85 | 0 ÷ 113 | 0,25 |
| FE 20 | 100 | 112,5 | 30 | 50 | 30 | 9 | 10,5 | 62,5 +1,5/-0,5 | 80 | 8 | M 6 | 5 | 20 | 5 | 14 | 0 ÷ 136 | 0 ÷ 170 | 0,45 |
| FE 30 | 100 | 115 | 35 | 60 | 35 | 9 | 10,5 | 77 +1,5/-0,5 | 80 | 10 | M 8 | 6 | 20 | 5 | 19 | 0 ÷ 340 | 0 ÷ 425 | 0,69 |
| FE 40 | 130 | 155 | 50 | 80 | 48 | 11 | 12,5 | 106 +2,0/-0,5 | 100 | 15 | M 10 | 8 | 26 | 5 | 18 | 0 ÷ 790 | 0 ÷ 1027 | 1,90 |
| FE 50 | 175 | 205 | 65 | 100 | 62 | 13 | 20,5 | 140 +2,0/-1,0 | 140 | 15 | M 12 | 10 | 35 | 6 | 20 | 0 ÷ 1600 | 0 ÷ 2000 | 3,90 |
| FE 60 | 225 | 260 | 80 | 120 | 80 | 13 | 20,5 | 199 +2,5/-1,5 | 180 | 18 | M 16 | 12 | 40 | 6 | 36 | 0 ÷ 2550 | 0 ÷ 3190 | 6,90 |
| FE 70 | 250 | 290 | 90 | 130 | 78 | 17 | 20,5 | 209 +2,5/-1,5 | 200 | 20 | M 20 | 20 | 40 | 6 | 25 | 0 ÷ 3950 | 0 ÷ 4950 | 9,50 |

1) Úhel natočení ± 30° / Rotation angle ± 30°

Pracovní teplota -40°C až +80°C. / Operating temperature from -40°C to +80°C.



Utahovací moment / Torque Mt

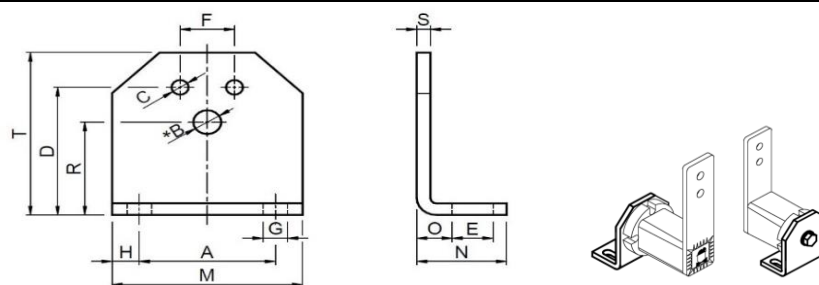
| Typ / type | Ms (Nm) | Typ / type | Ms (Nm) |
|------------|---------|------------|---------|
| RE 10 | 10 | FE 10 | 7 |
| RE 20 | 25 | FE 20 | 17 |
| RE 30 | 49 | FE 30 | 41 |
| RE 40 | 89 | FE 40 | 83 |
| RE 50 | 210 | FE 50 | 145 |
| RE 60 | 410 | FE 60 | 355 |
| RE 70 | 750 | FE 70 | 690 |

Úhel předpětí / Angle of preloading

| Typ type | $\alpha \leq 10^\circ$ | | | | $\alpha \leq 20^\circ$ | | | | $\alpha \leq 30^\circ$ | | | |
|---------------|------------------------|-------|-----------|-------|------------------------|-------|-----------|-------|------------------------|-------|-----------|-------|
| | F_A (N) | D_A | F_J (N) | D_J | F_A (N) | D_A | F_J (N) | D_J | F_A (N) | D_A | F_J (N) | D_J |
| RE 10 / FE 10 | 15 | 14 | 20 | 10 | 40 | 28 | 53 | 20 | 85 | 40 | 113 | 30 |
| RE 20 / FE 20 | 25 | 17 | 31 | 14 | 65 | 34 | 81 | 27 | 136 | 50 | 170 | 40 |
| RE 30 / FE 30 | 75 | 17 | 93 | 14 | 180 | 34 | 225 | 27 | 340 | 60 | 425 | 40 |
| RE 40 / FE 40 | 150 | 22 | 195 | 17 | 380 | 44 | 494 | 34 | 790 | 65 | 1027 | 50 |
| RE 50 / FE 50 | 290 | 30 | 362 | 24 | 730 | 60 | 912 | 47 | 1600 | 87 | 2000 | 70 |
| RE 60 / FE 60 | 500 | 39 | 625 | 31 | 1300 | 78 | 1625 | 61 | 2550 | 112 | 3190 | 90 |
| RE 70 / FE 70 | 600 | 43 | 750 | 34 | 1700 | 86 | 2125 | 68 | 4000 | 125 | 5000 | 100 |

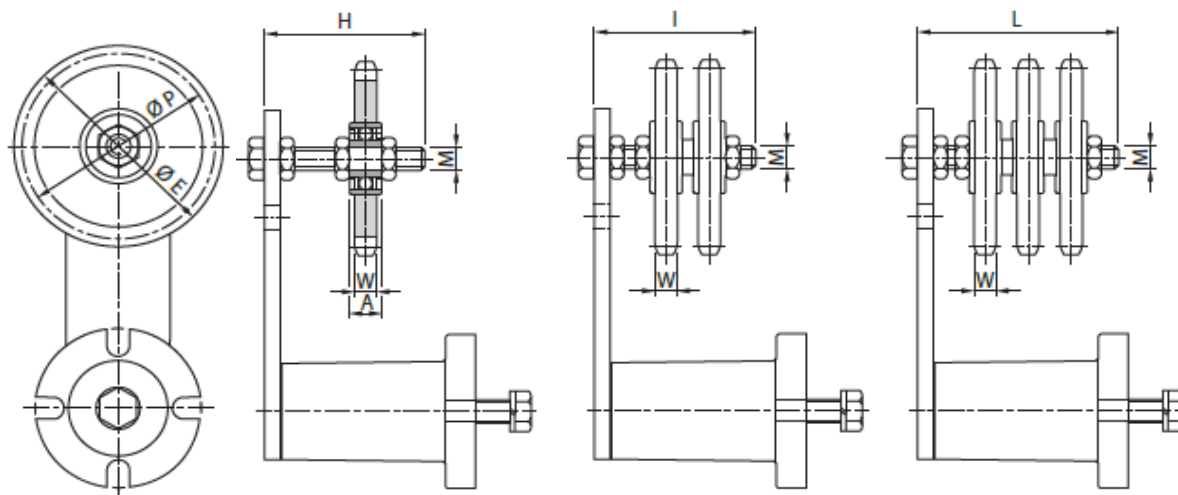
Držáky pro montáž napínáků

Supports for mounting of tensioners



Typ SB - držáky pro montáž napínáků ke stroji / for mounting of tensioners

| Typ type | A | Velikost size | B | C | D | E | F | G | H | M | N | O | R | S | T | Hmotnost weight (kg) |
|-------------|-----|------------------|------|------|-----|------|----|------|------|-----|----|------|----|----|-----|----------------------------|
| SB 10 | 30 | 10 | 6,5 | 5,5 | 35 | 13 | 10 | 7 | 7,5 | 45 | 30 | 11,5 | 27 | 4 | 46 | 0,09 |
| SB 20 | 40 | 20 | 8,5 | 6,5 | 44 | 13 | 12 | 7 | 7,5 | 55 | 32 | 13,5 | 34 | 5 | 58 | 0,17 |
| SB 30 | 50 | 30 | 10,5 | 8,5 | 55 | 15,5 | 20 | 9,5 | 10 | 70 | 38 | 16,5 | 43 | 6 | 74 | 0,29 |
| SB 40 | 65 | 40 | 12,5 | 10,5 | 75 | 21,5 | 25 | 11,5 | 12,5 | 90 | 52 | 21 | 57 | 8 | 98 | 0,72 |
| SB 50 | 80 | 50 | 16,5 | 12,5 | 85 | 24 | 35 | 14 | 15 | 110 | 55 | 21 | 66 | 8 | 116 | 0,93 |
| SB 60 | 100 | 60 | 20,5 | 12,5 | 110 | 30 | 40 | 18 | 20 | 140 | 66 | 26 | 80 | 10 | 140 | 1,82 |



Simplex "S"

Duplex "D"

Triplex "T"

Typ ZK - s řetězovými koly pro řetězy dle DIN 8187 / with sprockets for roller chains DIN 8187

| Typ type | Dostupné varianty available variants | | | Řetěz chain | Velikost size | A | ØE | H | I | L | M | ØP | W | Z | Hmotnost weight Typ / type | | |
|-------------|---|--------|---------|----------------|------------------|----|-------|-----|-----|-----|-----|--------|------|----|----------------------------------|------|------|
| | | | | | | | | | | | | | | | S | D | T |
| ZK 20-1 | Simplex | Duplex | - | 3/8" x 7/32" | RE 20 | 9 | 49,3 | 55 | 55 | - | M10 | 45,81 | 5,3 | 15 | 0,13 | 0,23 | - |
| ZK 30-1 | Simplex | Duplex | Triplex | 3/8" x 7/32" | RE 30 | 9 | 49,3 | 55 | 60 | 70 | M10 | 45,81 | 5,3 | 15 | 0,13 | 0,23 | 0,26 |
| ZK 30-2 | Simplex | Duplex | - | 1/2" x 5/16" | RE 30 | 9 | 65,5 | 55 | 60 | - | M10 | 61,09 | 7,2 | 15 | 0,21 | 0,37 | - |
| ZK 40-2 | Simplex | Duplex | Triplex | 1/2" x 5/16" | RE 40 | 12 | 65,5 | 80 | 80 | 80 | M12 | 61,09 | 7,2 | 15 | - | - | 0,51 |
| ZK 40-3 | Simplex | Duplex | Triplex | 5/8" x 3/8" | RE 40 | 12 | 83,0 | 80 | 80 | 80 | M12 | 76,36 | 9,1 | 15 | 0,38 | 0,60 | 0,96 |
| ZK 50-3 | - | - | Triplex | 5/8" x 3/8" | RE 50 | 15 | 83,0 | - | - | 120 | M20 | 76,36 | 9,1 | 15 | - | - | 1,26 |
| ZK 40-4 | Simplex | Duplex | - | 3/4" x 7/16" | RE 40 | 12 | 99,8 | 80 | 80 | - | M12 | 91,63 | 11,1 | 15 | 0,56 | 1,00 | - |
| ZK 50-4 | Simplex | Duplex | Triplex | 3/4" x 7/16" | RE 50 | 15 | 99,8 | 100 | 120 | 120 | M20 | 91,63 | 11,1 | 15 | 0,81 | 1,35 | 1,60 |
| ZK 50-5 | Simplex | Duplex | - | 1" x 17,02 mm | RE 50 | 15 | 117,0 | 100 | 120 | - | M20 | 106,12 | 16,2 | 13 | 1,23 | 2,10 | - |
| ZK 60-5 | - | - | Triplex | 1" x 17,02 mm | RE 60 | 15 | 117,0 | - | - | 160 | M20 | 106,12 | 16,2 | 13 | - | - | 2,92 |
| ZK 60-6 | Simplex | Duplex | Triplex | 1"1/4 x 3/4" | RE 60/70 | 15 | 147,8 | 100 | 140 | 160 | M20 | 132,65 | 18,5 | 13 | 2,28 | 3,60 | 5,20 |
| ZK 60-7 | Simplex | Duplex | Triplex | 1"1/2 x 1" | RE 60/70 | 15 | 150,0 | 140 | 140 | 180 | M20 | 135,21 | 24,1 | 11 | 2,33 | 4,20 | 6,10 |

Napínací řetězová kola se skládají z ložiska, šroubu a matic.

Napínací rameno není součástí a je nutné objednat samostatně.

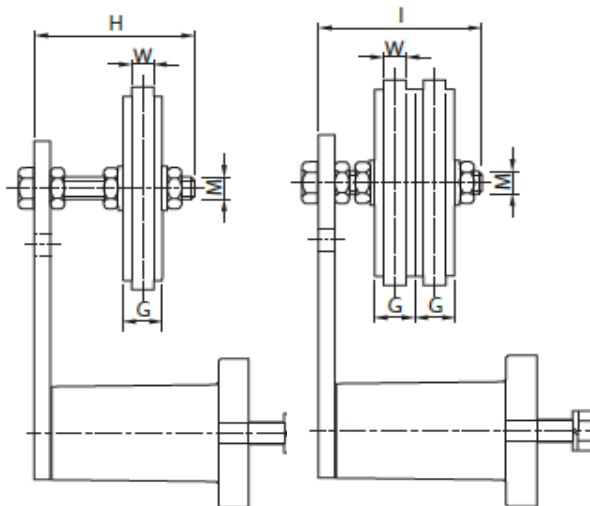
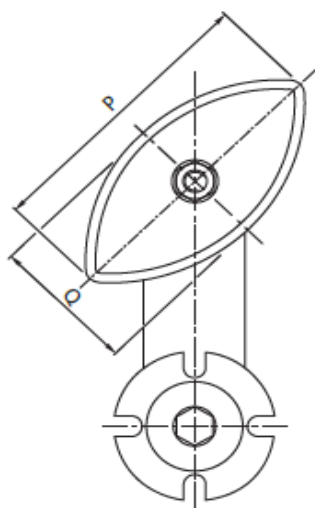
Provozní rychlost ≤60 m/min.

Provozní teplota ≤100°C.

The sprocket is composed by a steel crown with a bearing and is supplied with screws and nuts.

Operating speed ≤60 m/min.

Operating temperature ≤100°C.




Simplex "S"

Duplex "D"



Typ OVR - s kluznými bloky pro řetězy dle DIN 8187 / with sliding block for roller chains DIN 8187

| Typ type | Dostupné varianty available variants | | Řetěz chain | Velikost size  | G | H | I | M | P | Q | W | Hmotnost weight Typ / type | |
|-------------|---|--------|----------------|---|------|----|----|-----|-----|----|----|----------------------------------|------|
| | | | | | | | | | | | | S | D |
| OVR 10-1 | Simplex | Duplex | 3/8" x 7/32" | RE 10 | 10.2 | 45 | 45 | M8 | 75 | 40 | 5 | 0,09 | 0,10 |
| OVR 20-2 | Simplex | Duplex | 1/2" x 5/16" | RE 20 | 13.9 | 55 | 55 | M10 | 96 | 50 | 7 | 0,10 | 0,11 |
| OVR 30-2 | Simplex | Duplex | 1/2" x 5/16" | RE 30 | 13.9 | 55 | 60 | M10 | 96 | 50 | 7 | 0,11 | 0,12 |
| OVR 30-3 | Simplex | Duplex | 5/8" x 3/8"1 | RE 30 | 16.6 | 55 | 70 | M10 | 126 | 65 | 9 | 0,12 | 0,14 |
| OVR 30-4 | Simplex | Duplex | 3/4" x 7/16" | RE 30 | 19.5 | 60 | 70 | M10 | 148 | 74 | 11 | 0,13 | 0,15 |
| OVR 40-4 | Simplex | Duplex | 3/4" x 7/16" | RE 40 | 19.5 | 80 | 80 | M12 | 148 | 74 | 11 | 0,20 | 0,22 |

Polyethylenový kluzný blok s vysokou molekulární hustotou.

Speciální oválný tvar kluzného bloku OVR umožňuje jeho použití na obou stranách.

Napínací rameno není součástí a je nutné objednat samostatně.

Provozní rychlost ≤ 20 m/min.

Provozní teplota kluzného bloku ≤ 70 °C.

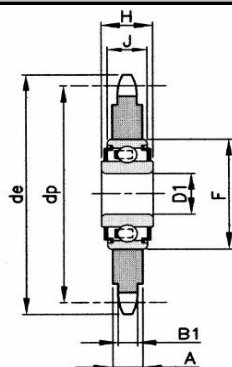
Polyethylene sliding block high molecular density.

The special oval form of the sliding block OVR allows to use it on both sides.

Tightener element is not included, you need to order it separately.

Operating speed ≤ 20 m/min.

Sliding block operating temperature ≤ 70 °C.

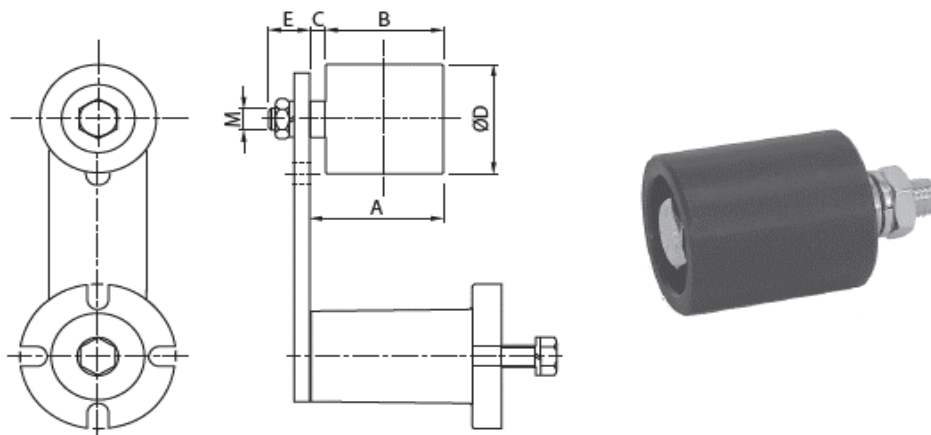


Typ - pro řetězy / for chains DIN 8187 - ISO/R 606

| Řetěz chain | Zubů teeth | d_p [mm] | d_e [mm] | Obj. č. part. no. | B_1 [mm] | A [mm] | D_1 [mm] | F [mm] | H [mm] | J [mm] | Ložisko bearing |
|------------------------|---------------|---------------|---------------|----------------------|---------------|-----------|---------------|-----------|-----------|-----------|--------------------|
| 05B 8,0x3,0mm | 23 | 58,75 | 62,00 | SR 05B-1-23 | 2,8 | 7,0 | 16 | 40 | 18,3 | 12 | 203 KRR |
| 06B 3/8"x7/32" | 20 | 60,89 | 64,30 | SR 06B-1-20 | 5,3 | 7,0 | 16 | 40 | 18,3 | 12 | 203 KRR |
| | 21 | 63,91 | 68,00 | SR 06B-1-21 | 5,3 | 7,0 | 16 | 40 | 18,3 | 12 | 203 KRR |
| 081 1/2"x1/8" | 18 | 73,14 | 78,90 | SR 081-1-18 | 3,0 | 7,0 | 16 | 40 | 18,3 | 12 | 203 KRR |
| 084 1/2"x3/16" | 16 | 65,10 | 70,90 | SR 084-1-16 | 4,5 | 7,0 | 16 | 40 | 18,3 | 12 | 203 KRR |
| | 18 | 73,14 | 78,90 | SR 084-1-18 | 4,5 | 7,0 | 16 | 40 | 18,3 | 12 | 203 KRR |
| 08B 1/2"x5/16" | 14 | 57,07 | 61,80 | SR 08B-1-14 | 7,2 | 7,2 | 16 | 40 | 18,3 | 12 | 203 KRR |
| | 15 | 61,09 | 65,50 | SR 08B-1-15 | 7,2 | 7,2 | 16 | 40 | 18,3 | 12 | 203 KRR |
| | 16 | 65,10 | 69,50 | SR 08B-1-16 | 7,2 | 7,2 | 16 | 40 | 18,3 | 12 | 203 KRR |
| | 18 | 73,14 | 77,80 | SR 08B-1-18 | 7,2 | 7,2 | 16 | 40 | 18,3 | 12 | 203 KRR |
| | 20 | 81,19 | 85,80 | SR 08B-1-20 | 7,2 | 7,2 | 16 | 40 | 18,3 | 12 | 203 KRR |
| | 21 | 85,22 | 89,70 | SR 08B-1-21 | 7,2 | 7,2 | 16 | 40 | 18,3 | 12 | 203 KRR |
| 10B 5/8"x3/8" | 13 | 66,32 | 73,00 | SR 10B-1-13 | 9,1 | 9,1 | 16 | 40 | 18,3 | 12 | 203 KRR |
| | 14 | 71,34 | 78,00 | SR 10B-1-14 | 9,1 | 9,1 | 16 | 40 | 18,3 | 12 | 203 KRR |
| | 15 | 76,36 | 83,00 | SR 10B-1-15 | 9,1 | 9,1 | 16 | 40 | 18,3 | 12 | 203 KRR |
| | 16 | 81,37 | 88,00 | SR 10B-1-16 | 9,1 | 9,1 | 16 | 40 | 18,3 | 12 | 203 KRR |
| | 17 | 86,30 | 93,00 | SR 10B-1-17 | 9,1 | 9,1 | 16 | 40 | 18,3 | 12 | 203 KRR |
| | 18 | 91,42 | 98,30 | SR 10B-1-18 | 9,1 | 9,1 | 16 | 40 | 18,3 | 12 | 203 KRR |
| | 21 | 106,52 | 113,40 | SR 10B-1-21 | 9,1 | 9,1 | 16 | 40 | 18,3 | 12 | 203 KRR |
| 12B 3/4"x7/16" | 12 | 73,60 | 81,50 | SR 12B-1-12 | 11,1 | 11,1 | 16 | 40 | 18,3 | 12 | 203 KRR |
| | 13 | 79,59 | 87,50 | SR 12B-1-13 | 11,1 | 11,1 | 16 | 40 | 18,3 | 12 | 203 KRR |
| | 15 | 91,63 | 99,80 | SR 12B-1-15 | 11,1 | 11,1 | 16 | 40 | 18,3 | 12 | 203 KRR |
| | 16 | 97,65 | 105,50 | SR 12B-1-16 | 11,1 | 11,1 | 16 | 40 | 18,3 | 12 | 203 KRR |
| 16B 1"x17,02mm | 12 | 98,14 | 109,00 | SR 16B-1-12 | 16,2 | 16,2 | 20 | 47 | 17,7 | 14 | 204 KRR |
| | 15 | 122,17 | 133,00 | SR 16B-1-15 | 16,2 | 16,2 | 20 | 47 | 17,7 | 14 | 204 KRR |
| | 17 | 138,24 | 149,00 | SR 16B-1-17 | 16,2 | 16,2 | 20 | 47 | 17,7 | 14 | 204 KRR |
| 20B 1 1/4"x3/4" | 13 | 132,65 | 147,80 | SR 20B-1-13 | 18,5 | 18,5 | 25 | 52 | 21,0 | 15 | 205 KRR |

Materiál/Material: ocel C43 / steel C43

Tučně označené rozměry jsou standardní. / Bolt-typed sizes are standard.

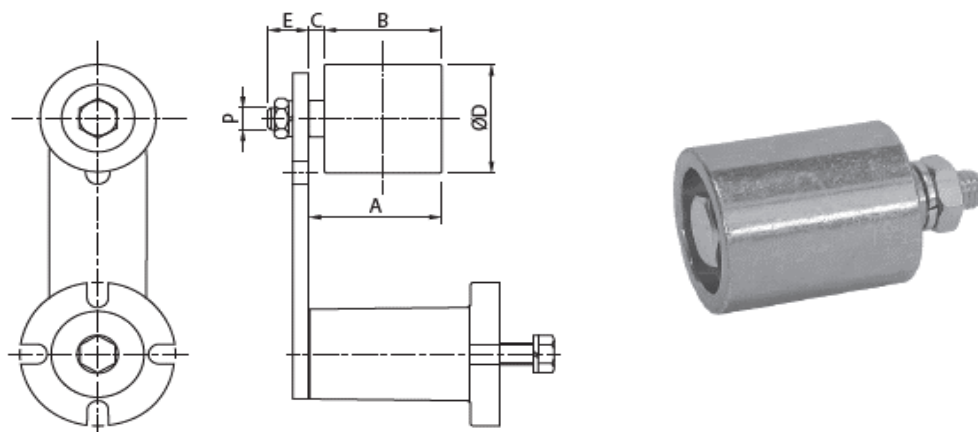


Typ RP - polyamid / polyamid

| Typ type | Velikost size | Hmotnost weight | A | B | C | ØD | E | M | V _{max} (rpm) |
|-------------|------------------|--------------------|-----|-----|---|----|----|-----|---------------------------|
| RP 1 | RE 10 | 0,08 | 38 | 35 | 3 | 30 | 13 | M8 | 8000 |
| RP 2/3 | RE 20-30 | 0,18 | 51 | 45 | 6 | 40 | 16 | M10 | 8000 |
| RP 4 | RE 40 | 0,40 | 68 | 60 | 8 | 60 | 21 | M12 | 6000 |
| RP 5 | RE 50 | 1,20 | 99 | 90 | 9 | 80 | 28 | M20 | 5000 |
| RP 6 | RE 60 | 1,70 | 142 | 135 | 7 | 90 | 27 | M20 | 4500 |

Plastové rolny s ložisky mazáním. / The roller is in plastic installed on greased bearings.

Maximální pracovní teplota do 70°C. / Roller operating temperature ≤70°C.

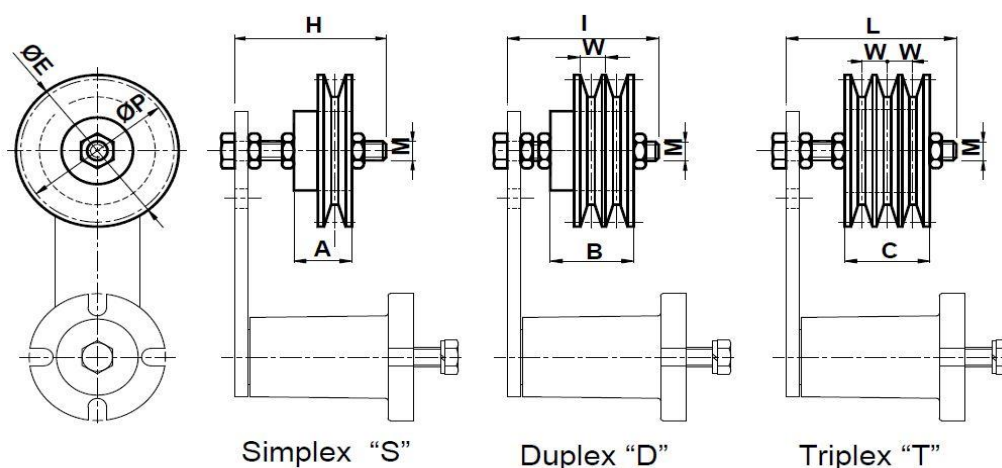


Typ RU - ocel - pozink / galvanized steel


| Typ type | Velikost size | Hmotnost weight | A | B | C | ØD | E | P | V _{max} (rpm) |
|-------------|------------------|--------------------|-----|-----|---|----|----|-----|---------------------------|
| RU 1 | RE 10 | 0,16 | 38 | 35 | 3 | 30 | 13 | M8 | 15000 |
| RU 2/3 | RE 20-30 | 0,37 | 51 | 45 | 6 | 40 | 16 | M10 | 12000 |
| RU 4 | RE 40 | 0,85 | 68 | 60 | 8 | 60 | 21 | M16 | 9500 |
| RU 5 | RE 50 | 2,09 | 99 | 90 | 9 | 80 | 28 | M20 | 6500 |
| RU 6 | RE 60 | 2,44 | 142 | 135 | 7 | 90 | 27 | M20 | 6500 |

Ocelové rolny s ložisky s mazáním. / The roller is in galvanized steel installed on greased bearings.

Maximální pracovní teplota do 100°C. / Roller operating temperature ≤100°C.



Typ SP - klínová řemenice pro běžné profily klínových řemenů / V-belt pulley for standard v-belt profiles

| Typ type | Dostupné varianty available variants | | | Řemen belt | Velikost size  | A | B | C | ØE | H | I | L | M | ØP | W | Hmotnost weight Typ / type | | |
|-------------|---|--------|---------|---------------|---|----|----|----|-------|----|----|-----|-----|-----|----|----------------------------------|-----|-----|
| | | | | | | | | | | | | | | | | S | D | T |
| SP 30-Z | Simplex | Duplex | Triplex | SPZ | RE 30 | 24 | 35 | 40 | 67,0 | 55 | 60 | 70 | M10 | 63 | 12 | 0,4 | 0,7 | 1,1 |
| SP 40-A | Simplex | Duplex | Triplex | SPA | RE 40 | 34 | 49 | 50 | 95,6 | 80 | 80 | 80 | M12 | 90 | 15 | 1,0 | 1,7 | 1,8 |
| SP 40-B | Simplex | Duplex | - | SPB | RE 40 | 41 | 60 | - | 132,0 | 90 | 80 | - | M12 | 125 | 19 | 1,9 | 2,8 | - |
| SP 50-B | - | - | Triplex | SPB | RE 50 | - | - | 63 | 132,0 | - | - | 120 | M20 | 125 | 19 | - | - | 3,5 |

Sada se skládá z litinové kladky pro klínové řemeny namontované na mazaných ložiskách. Na přání mohou být řemenice dodávány s jiným profilem nebo pro ozubené řemeny. / The kit is composed of a cast-iron pulley for V-belts mounted on lubricated bearings. On request pulleys may be supplied with a different profile or for cogged belts.