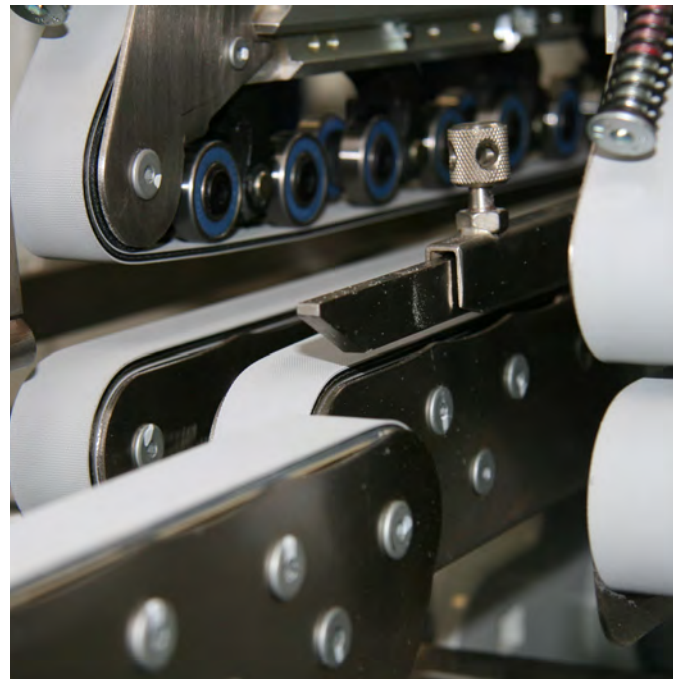


RAPPLON® High Performance Flat Belts

EN



RAPPLON® High Performance Flat Belts

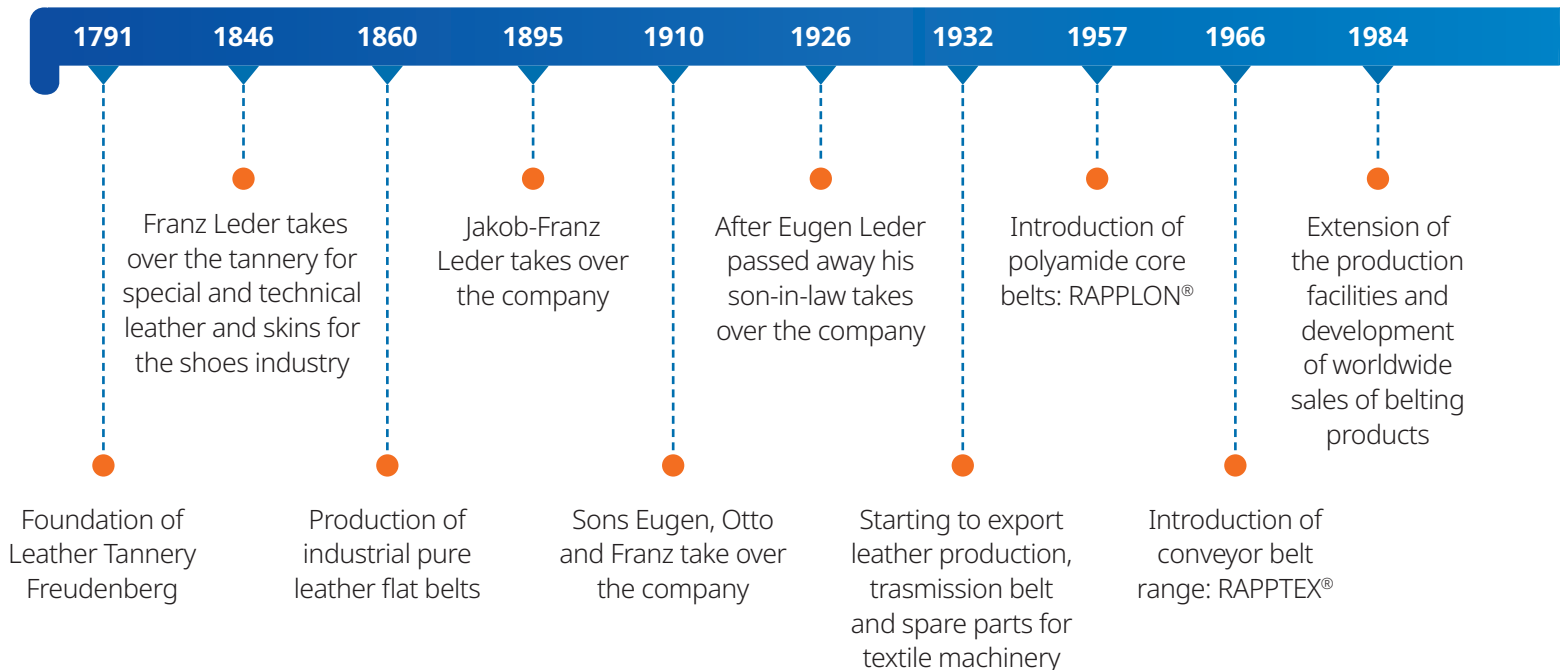
Accelerate to the most effective performance

Who we are

Ammeraal Beltech is a world leading manufacturer of process and conveyor belts for a diverse range of applications in nearly every major industry.

Our aim is to be the recognised leader everywhere we do business. To help achieve that goal, our international growth and expansion programme has brought some of the top brands in belting into our group.

Ammeraal Beltech offers a complete range of high quality flat belts made on state-of-the-art production equipment. This includes classical nylon core belting as well as modern belt constructions with thermo-plastic inner layers.



RAPPLON®  *Swiss made*

The production site is located in Rapperswil-Jona Switzerland where the manufacturing of RAPPLON® High Performance Flat Belts is our competence since the late 50s. In 1993 a new production plant was built to apply new technologies and set new quality standards, considering future market demands.

Continuous R&D efforts and the close collaboration with expert partners are resulting in innovative solutions to our customers. Our aim is to satisfy our customers with unique belting solutions and easy-to-use joining tools resulting in overall higher cost efficiency.

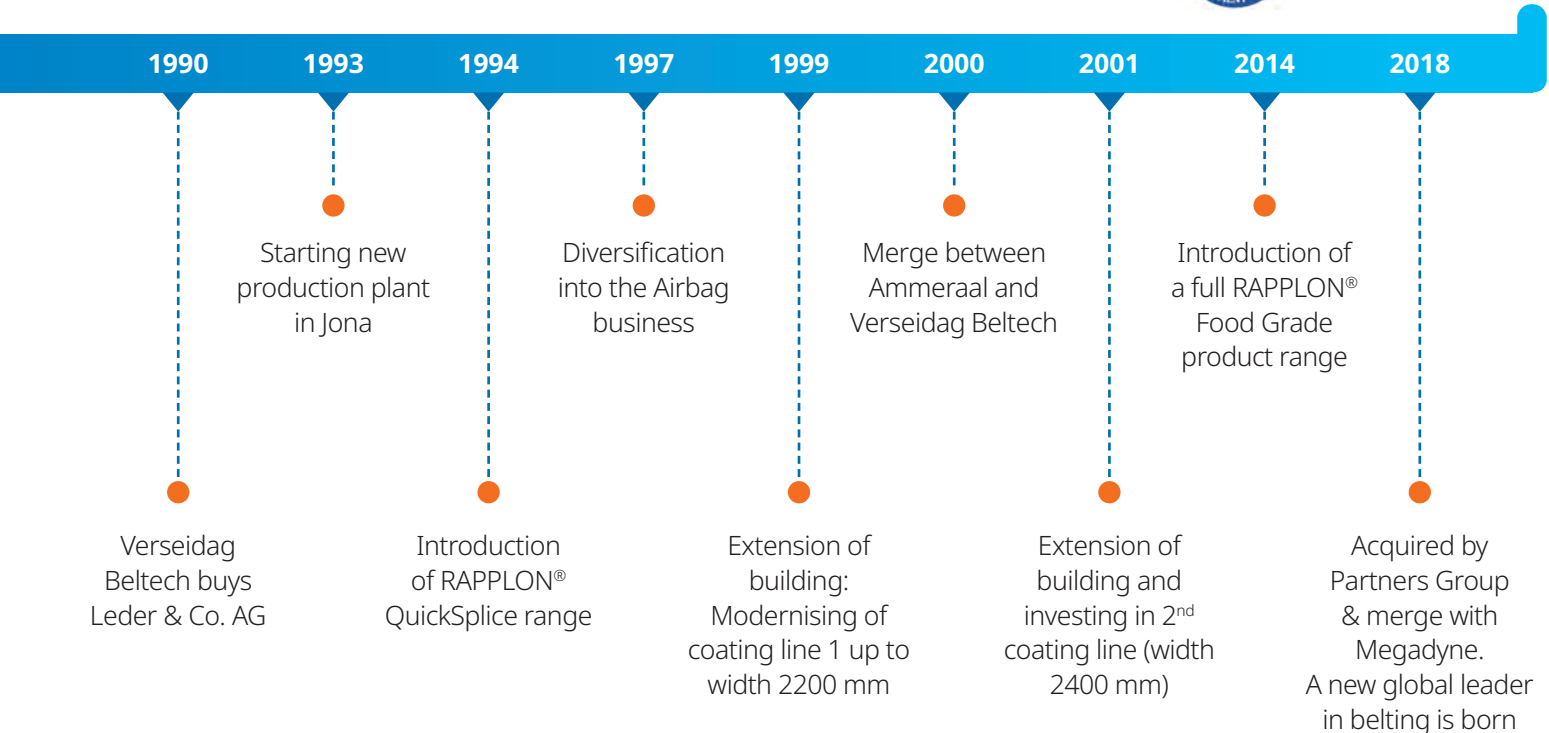
Ammeraal Beltech Switzerland is ISO certified since 1994. Our own quality management team in combination with regular audits make sure that all customer relevant processes are targeting for highest product and service quality.

Ammeraal Beltech maintains a leading position especially thanks to the customer-oriented acting of our highly motivated and flexible staff members.



Facts & Figures

Manufacturing area	2,800 m ²
Fabrication area	2,000 m ²
Total area	8,000 m ²
Employees	100
Quality system	ISO 9001:2015 ISO 14001:2015



Our knowledge and expertise result in different product groups

Ammeraal Beltech, one of the world's leading suppliers in the belting area, also has strong expertise in coating and laminating the most diverse technical fabrics and sheet materials.

RAPPLON® Classic Flat Belts



RAPPLON® QuickSplice Flat Belts



RAPPLON® Equipment & Tooling



Coating & Lamination



Wide range of High Performance Flat Belts to suit the needs of various industries

Ammeraal Beltech offers Flat Belts for almost all industries.

Through our long-standing experience, market expertise and technical know-how, we are able to provide the right belting solutions for most industries and applications, including:

- Paper production & Converting
- Printing & Print finishing
- Tube winding
- Packaging
- Logistics
- Mail Sorting
- Food
- Textile
- Canning
- Wood
- and many more...

High Performance Flat Belts offer outstanding advantages:

- Long service life
- Highest efficiency
- Energy saving
- Maintenance free
- High speed
- Shock and vibration absorbing
- Extended bearing life



Logistics

RAPPLON® High Performance Flat Belts are available for use in a wide selection of belting solutions for all types of roller drive systems, segmented sections and robotics.

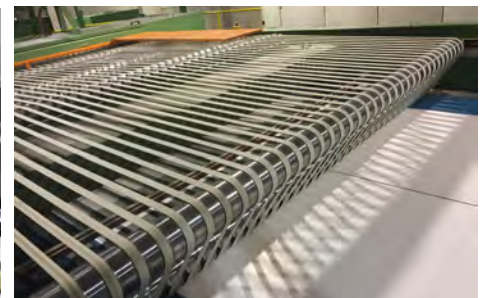
Our belts provide excellent performance under conditions that may include wide temperature variations, fully loaded stops and starts, incline and decline sections and other operational or environmental challenges.



Packaging

Our Flat Belts provide improved performance plus the advantage of Food Grade covers for use in sensitive applications.

RAPPLON® Folder Gluer Belts with Food Grade covers meet both FDA and EC standards for contact with dry foodstuffs giving extra peace of mind to food carton manufacturers.



Paper & Print

Within the Paper & Print Industry, Ammeraal Beltech has been setting the standard for many years with a consistent high product quality and market-specific features. Innovations over the years have resulted in a number of new concepts. Ammeraal Beltech offers a wide range of belting solutions for:

- Print and post printing
- Personal care & tissue
- Paper production and converting
- Tube winding



Textile

The yarn manufacturing industry is a huge economic segment with high expectations on flat belts. Every year yarn manufacturers must achieve higher spindle speed, more uniform yarn quality with lower cost and energy consumption.

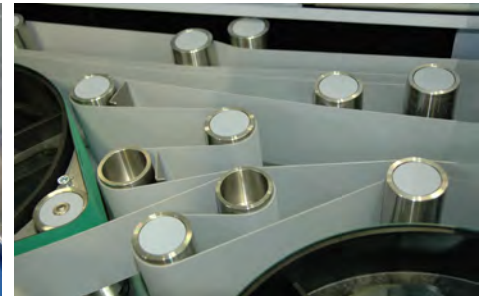
Since decades our products are applied in textile machines all over the world: Bale opener, Carding, Draw frames, Combing, Roving, Ring spinning, Open end spinning, Travel cleaner, Twisting, Winding, Covering, Texturising, Circular Knitting and many more.



Food

Homogeneous high quality polyurethane belts are specifically made for your food processing and packaging applications where Food Safety & Hygiene is always a must. Our materials virtually cannot contaminate any food product.

The combination of dimensional stability with easy tracking makes this range absolutely maintenance free. Just fit and forget!



Mail Sorting

Every day, billions of letters and parcels are sorted and distributed for further transport to all parts of the world.

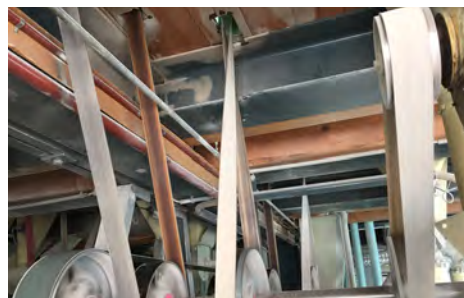
Ammeraal Beltech is one of the leading belting suppliers to global major OEMs and is geared to meet the exact demands of the Mail Sorting Industry.



Canning

Our engineered flat belts with chamfered edges keep the cans in line and provide an accurate high speed transport through the machines. Magnetic elevating systems are equipped with our flat belts to spread the production line of cans.

A close cooperation with Canning OEMs ensures a state of the art product range for the canning industry.



Power Transmission

The classic polyamide core RAPPLON® drive belts remain the prime choice for applications with high start-up torques, high peak loads and safe belt tracking.

RAPPLON® flat belts with stretched polyamide foil tensile member are easy on bearings and shafts and can be optimally configured for energy saving transmission configurations.



Wood

Ammeraal Beltech is your guarantee for reliability of process and conveyor belts, High Performance Flat Belts and perfect on-site service around the clock.

The wood market is a multifaceted industry which demands a wide range of High Performance Flat Belts to transmit power, to accelerate to the most effective performance and to transport wood goods in various kind of logistics applications.

Innovation

In every industry, improvements in production mean new process solutions have to be found. Working together with our customers and with leading research institutions, we have developed many solutions resulting in state of the art flat belts.

Within our purpose-built R&D centre, we are continuously optimising and improving our products. We work to meet new challenges, such as higher operating speed and efficiency, increased cleanability and durability, and ever more stringent standards of hygiene and safety.

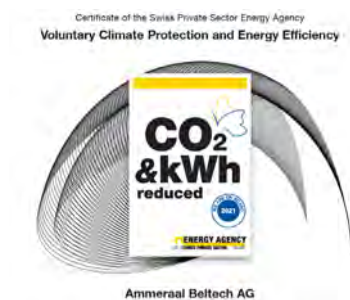
Our engineers have the technical proficiency to develop a belt that performs under the most challenging operating conditions. What's more, because Ammeraal Beltech manages every aspect of the belting quality - from fabric to final fabrication - we are confident in our ability to deliver the right belt for the right job.

Environmental protection

We are committed to our ecological responsibility for the preservation of an intact environment as the basis for life for our society and for future generations. Our corporate philosophy is to reconcile the protection of the environment and business practices.

We see environmental protection as a common task with our customers and suppliers and ensure that appropriate measures for the prevention of environmental impacts are adhered to during the production of our products.

Laws and environmental requirements are our targets to sustainable climate protection. With the voluntary participation in the program of the Energy Agency for Economic Affairs, we are committed to the active reduction of CO² emissions and the optimisation of energy efficiency. The target agreement is recognised by the Confederation, the cantons and the business partners.



Local Contacts

... and 150 more service contact points
at ammeraalbeltech.com

Local Contacts

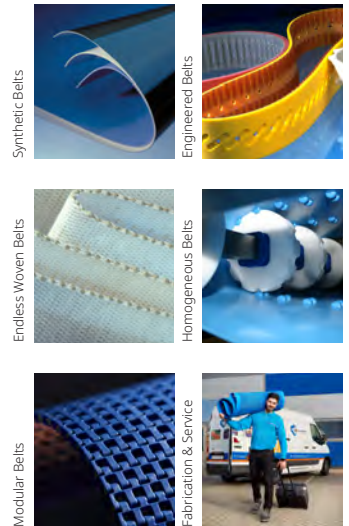
Authorised distributor



TYMA CZ, s.r.o.
Na Pískách 731/12
CZ - 40004 Trmice

Phone: +420 475 655 010
Email: info@tyma.cz
<https://www.tyma.cz>

**Expert advice, quality solutions
and local service
for all your belting needs**



General contact information:

Ammeraal Beltech
P.O. Box 38
1700 AA Heerhugowaard
The Netherlands

T +31 (0)72 575 1212
info@ammeraalbeltech.com

ammega.com