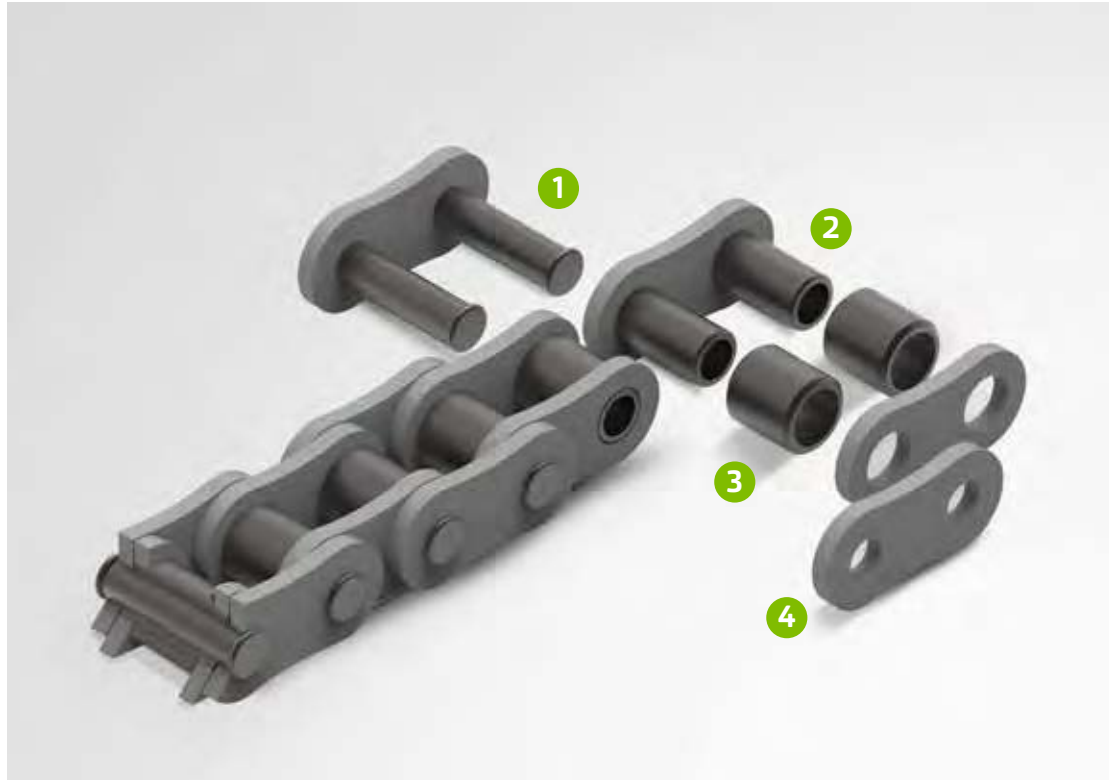


KW roller chain

- ① Wear-optimised pins, case-hardened
- ② Seamless, cold-extruded bushes
- ③ Seamless, case-hardened rollers for high wear resistance
- ④ Ball-blasted link plates, quenched and tempered



KW roller chains

The main distinguishing feature of KW roller chains as compared to standard roller chains are their seamless, cold-extruded bushes, case-hardened pins, ball-blasted, quenched and tempered link plates and through-hardened rollers. The precision of the finishing and the heat treatment of their components ensure that all components expose exceptionally good wear resistance properties and guarantee the perfect length accuracy and straightness of the chain.

The alloyed case-hardened steel used for the pins (up to 1 ½") provides good shear strength and core strength. The surface quality is further enhanced by precision-grinding, which reduces the frictional resistance between the pin and the bush.

The seamless bush guarantees optimal cylindricity. The accuracy of this is much higher than for bushes made of precision-steel pipes. This increases the length precision of the chain. The case-hardened steel used for the bushes provides high surface hardness and an optimised wear resistance. The through hardened rollers used from a size of > 5/8" ensure good shock resistance to surges caused when the chain engages in the sprocket.

Cutting-edge tools are used to accurately stamp the link plates with a particularly high proportion of clear-cut surface. Combined with the grinded pins and bushes this ensures an exceptional press fit of the links plates. Together with the strict manufacturing tolerances applied and the enhanced surface strength achieved by shot peening the components, this allows to improve the overall fatigue strength.

A wax-like initial lubricant and the default pre-stretching of the chains with >40% of the breaking load ensure that the initial wear is kept low.

The initial lubrication of KettenWulf roller chains is conceived for an operating temperature range of -30°C to +130°C. Our many years of experience and manufacturing options in the field of conveyor chains allow us to produce roller chains which are larger than 80B. Please don't hesitate to contact us.

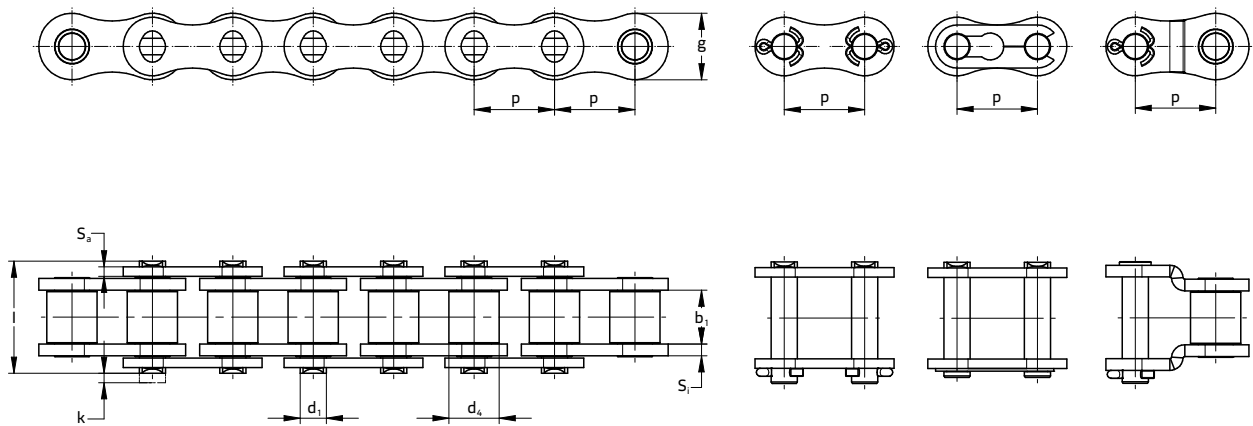
KettenWulf Betriebs GmbH

Distributor: TYMA CZ, s.r.o., Na Pískách 731, 400 04 Trmice, CZ, tel.: +420 475 655 010, e-mail: info@tyma.cz, web: <https://www.tyma.cz>

DIN 8187 / ISO 606-compliant KW roller chains

KW simplex

Drawings / product data (European standard)



KettenWulf wear-resistant roller chains

KW simplex, sizes according to European standard

ISO 606 / DIN 8187

Designation	Pitch [mm]	Min. inner width [mm]	Max. protection roller Ø [mm]	Max. pin Ø [mm]	Max. pin length [mm]	Max. overhang connecting pin [mm]	Inner plate thickness [mm]	Outer plate thickness [mm]	Plate height [mm]	Bearing area [cm ²]	Min. breaking load [N]	Weight [kg/m]
Chain type	p	b ₁	d ₂	d ₁	l	k	S ₁	S ₂	g	f	F _B	≈q
KW 04	6.000	2.80	4.00	1.85	6.80	0.50	0.63	0.65	5.00	0.08	3000	0.13
KW 05B	8.000	3.00	5.00	2.31	8.00	0.90	0.80	0.80	7.00	0.11	4500	0.18
KW 06B*	9.525	5.72	6.35	3.28	12.50	2.40	1.30	1.30	8.20	0.28	8900	0.40
KW 081**	12.700	3.60	7.75	3.66	9.60	1.30	0.96	0.96	9.90	0.26	8200	0.30
KW 083	12.700	4.88	7.75	4.08	12.40	1.10	1.30	1.30	10.40	0.32	12000	0.50
KW 084	12.700	4.88	7.75	4.09	14.30	1.30	1.80	1.60	11.10	0.33	16000	0.60
KW 08B**	12.700	7.75	8.51	4.45	16.50	1.50	1.60	1.60	11.80	0.50	17800	0.70
KW 10B**	15.875	9.65	10.16	5.08	19.60	1.40	1.70	1.70	14.70	0.67	22400	0.90
KW 12B**	19.050	11.68	12.07	5.72	22.30	2.70	1.85	1.85	16.00	0.89	28900	1.20
KW 16B**	25.400	17.02	15.88	8.28	35.60	1.60	4.00	3.00	20.90	2.10	60000	2.67
KW 20B**	31.750	19.58	19.05	10.19	40.50	3.70	4.50	3.50	26.30	2.96	95000	3.81
KW 24B**	38.100	25.40	25.40	14.63	53.30	4.70	6.00	4.80	33.30	5.54	160000	7.43
KW 28B	44.450	30.99	27.94	15.90	65.00	5.30	7.50	6.00	36.80	7.39	200000	9.47
KW 32B	50.800	30.99	29.21	17.81	65.20	5.80	7.00	6.40	42.20	8.10	250000	10.17
KW 40B	63.500	38.10	39.37	22.85	82.20	7.00	8.50	8.00	52.90	12.75	355000	17.00
KW 48B	76.200	45.70	48.20	29.20	99.00	8.00	12.00	10.00	64.00	20.61	560000	27.00
KW 56BHFS	88.900	53.34	54.00	34.30	113.00	12.00	14.00	12.00	78.00	27.90	850000	38.00
KW 64BHFS	101.600	60.96	63.50	39.40	129.00	19.00	15.00	14.00	93.30	36.25	1120000	49.50
KW 72BHFS	114.300	68.58	72.39	44.50	147.00	14.00	18.00	15.00	103.63	46.19	1400000	64.50

* straight link plate

** also available on reel from stock

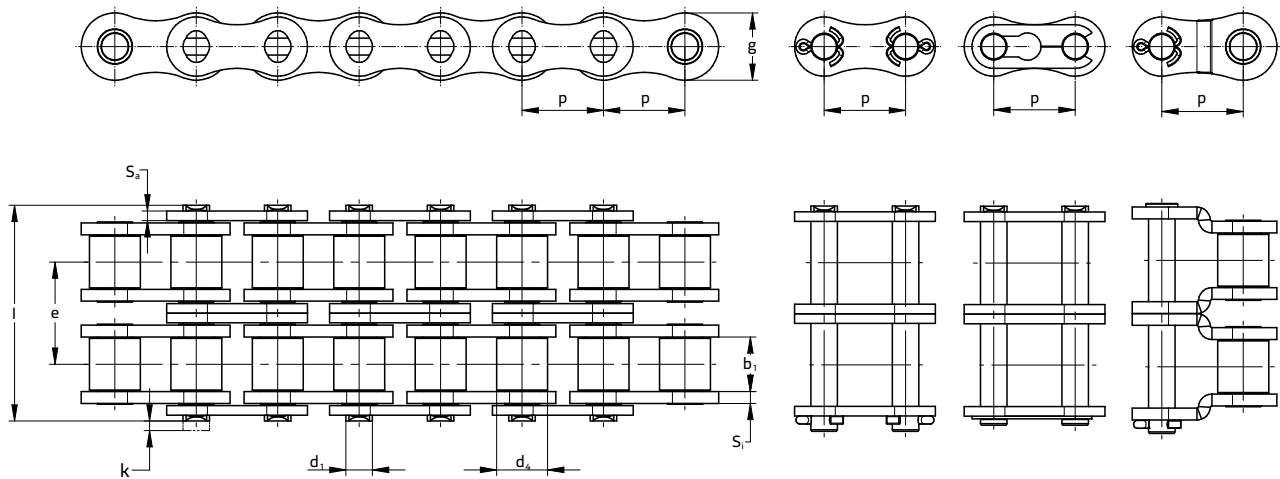
» The indicated breaking loads are those stipulated in ISO 606. We will be happy to provide you with the actual higher breaking loads upon request.

» We can also produce larger roller chains than 80B upon request.

DIN 8187 / ISO 606-compliant KW roller chains

KW duplex

Drawings / product data (European standard)



KettenWulf wear-resistant roller chains

KW duplex, sizes according to European standards

ISO 606 / DIN 8187

Designation	Pitch [mm]	Min. inner width [mm]	Max. protection roller \varnothing [mm]	Max. pin \varnothing [mm]	Max. pin length [mm]	Max. overhang connecting pin [mm]	Inner plate thickness [mm]	Outer plate thickness [mm]	Plate height [mm]	Transverse pitch [mm]	Bearing area [cm ²]	Min. breaking load [N]	Weight [kg/m]
Chain type	p	b ₁	d ₁	d ₂	l	k	S ₁	S ₂	g	e	f	F _B	≈q
KW 05B-2	8.000	3.04	5.00	2.31	13.60	0.70	0.76	0.76	7.00	5.64	0.22	7800	0.35
KW 06B-2*	9.525	5.72	6.35	3.28	23.50	1.00	1.30	1.30	8.20	10.24	0.56	16900	0.80
KW 08B-2	12.700	7.75	8.51	4.45	30.60	1.40	1.60	1.60	11.80	13.92	1.01	32000	1.35
KW 10B-2	15.875	9.65	10.16	5.08	36.20	1.40	1.70	1.70	14.70	16.59	1.34	44500	1.89
KW 12B-2	19.050	11.68	12.07	5.72	42.10	1.40	1.85	1.85	16.10	19.46	1.79	57800	2.45
KW 16B-2	25.400	17.02	15.88	8.28	67.00	2.10	4.00	3.00	20.90	31.88	4.21	106000	5.60
KW 20B-2	31.750	19.58	19.05	10.19	77.20	3.50	4.50	3.50	26.30	36.45	5.91	170000	7.97
KW 24B-2	38.100	25.40	25.40	14.63	101.60	4.70	6.00	4.80	33.30	48.36	11.09	280000	14.10
KW 28B-2	44.450	30.99	27.94	15.90	124.60	5.30	7.50	6.00	36.80	59.56	14.79	360000	18.76
KW 32B-2	50.800	30.99	29.21	17.81	123.80	5.80	7.00	6.40	42.20	58.55	16.21	450000	20.00
KW 40B-2	63.500	38.10	39.37	22.85	154.50	7.00	8.50	8.00	52.80	72.30	25.50	630000	33.00
KW 48B-2	76.200	45.70	48.20	29.20	190.00	8.00	12.00	10.00	64.00	91.21	41.23	1000000	54.00
KW 56B-2HFS	88.900	53.34	54.00	34.30	221.50	11.50	14.00	12.00	78.00	106.60	55.80	1600000	75.00
KW 64B-2HFS	101.600	60.96	63.50	39.40	250.00	10.00	15.00	14.00	93.30	119.89	72.50	2100000	100.00
KW 72B-2HFS	114.300	68.58	72.39	44.50	282.80	10.70	18.00	15.00	103.63	136.27	92.40	2700000	129.00

* straight link plate

» The indicated breaking loads are those stipulated in ISO 606. We will be happy to provide you with the actual higher breaking loads upon request.

» We can also produce larger roller chains than 80B upon request.

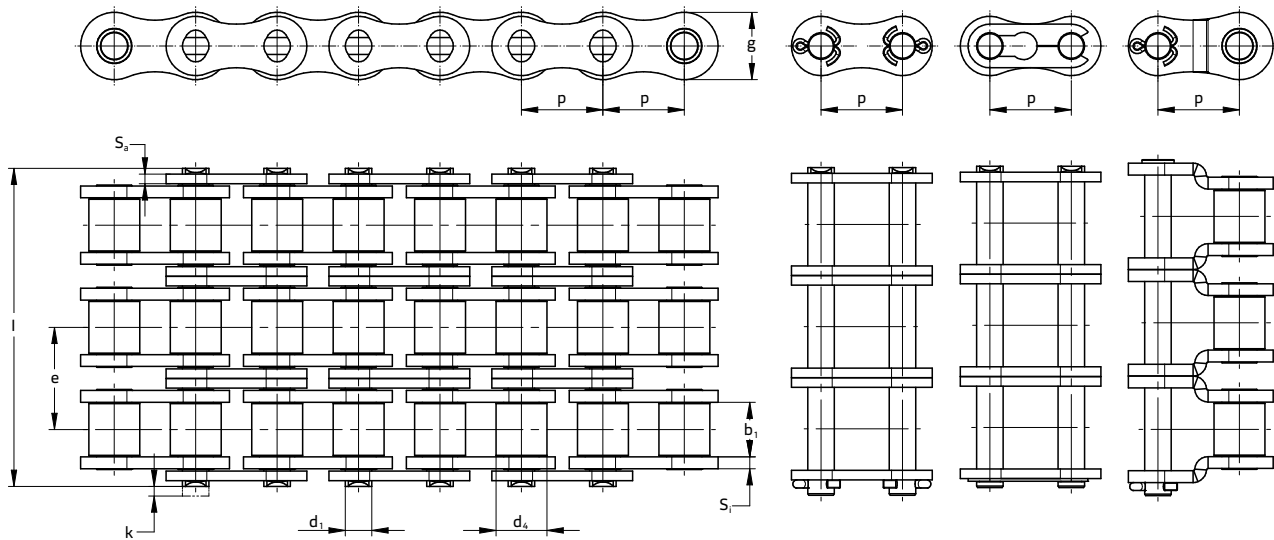
KettenWulf Betriebs GmbH

Distributor: TYMA CZ, s.r.o., Na Pískách 731, 400 04 Trmice, CZ, tel.: +420 475 655 010, e-mail: info@tyma.cz, web: <https://www.tyma.cz>

DIN 8187 / ISO 606-compliant KW roller chains

KW triplex

Drawings / product data (European standard)



KettenWulf wear-resistant roller chains

KW triplex, sizes according to European standards

ISO 606 / DIN 8187

Designation	Pitch [mm]	Min. inner width [mm]	Max. protection roller Ø [mm]	Max. pin Ø [mm]	Max. pin length [mm]	Max. overhang connecting pin [mm]	Inner plate thickness [mm]	Outer plate thickness [mm]	Plate height [mm]	Transverse pitch [mm]	Bearing area [cm ²]	Min. breaking load [N]	Weight [kg/m]
Chain type	p	b ₁	d ₄	d ₁	l	k	S ₁	S ₂	g	e	f	F _B	≈ q
KW 06B-3*	9.525	5.72	6.35	3.28	33.10	2.30	1.30	1.30	8.20	10.24	0.84	24900	1.12
KW 08B-3	12.700	7.75	8.51	4.45	44.90	1.10	1.60	1.60	11.80	13.92	1.51	44500	2.05
KW 10B-3	15.875	9.65	10.16	5.08	52.80	1.40	1.70	1.70	14.70	16.59	2.02	66700	2.64
KW 12B-3	19.050	11.68	12.07	5.72	61.50	1.50	1.85	1.85	16.10	19.46	2.68	86700	3.67
KW 16B-3	25.400	17.02	15.88	8.28	99.40	3.30	4.20	3.10	21.00	31.88	6.31	166000	8.00
KW 20B-3	31.750	19.58	19.05	10.19	113.50	3.50	4.50	3.50	26.30	36.45	8.87	250000	11.24
KW 24B-3	38.100	25.40	25.40	14.63	150.00	4.70	6.00	4.80	33.25	48.36	16.63	425000	21.00
KW 28B-3	44.450	30.99	27.94	15.90	184.20	5.30	7.50	6.00	36.80	59.56	22.18	530000	28.56
KW 32B-3	50.800	30.99	29.21	17.81	182.40	5.80	7.00	6.40	42.00	58.55	24.31	670000	30.00
KW 40B-3	63.500	38.10	39.37	22.85	228.50	5.30	8.50	8.00	52.80	72.30	38.25	950000	50.00
KW 48B-3	76.200	45.70	48.20	29.20	281.00	8.00	12.00	10.00	64.00	91.21	61.84	1500000	80.00
KW 56B-3HFS	88.900	53.34	54.00	34.30	330.00	12.00	14.00	12.00	78.00	106.60	83.71	2310000	111.50
KW 64B-3HFS	101.600	60.96	63.50	39.40	370.00	10.00	15.00	14.00	90.17	119.89	108.74	3050000	150.00
KW 72B-3HFS	114.300	68.58	72.39	44.50	420.00	14.00	18.00	15.00	103.63	136.27	135.57	3930000	194.00

* straight link plate

» The indicated breaking loads are those stipulated in ISO 606. We will be happy to provide you with the actual higher breaking loads upon request.

» We can also produce larger roller chains than 80B upon request.

KettenWulf Betriebs GmbH

Distributor: TYMA CZ, s.r.o., Na Pískách 731, 400 04 Trmice, CZ, tel.: +420 475 655 010, e-mail: info@tyma.cz, web: https://www.tyma.cz